

Job Name: 25-3000 - Wilkinson Lane PS
 Job Location: White House, TN
 Contractor: Cumberland Valley Constructors, Inc.

Plant: 100
 1/12/2026 7:32:46 AM

Tech: J. Horsley - F
 PC: A. Chambers



Structure ID: WW1

P5 MH144LD18CDAREDS

MH FLAT TOP w/72"x54" Hatch w/Conblock CDA Red F/G

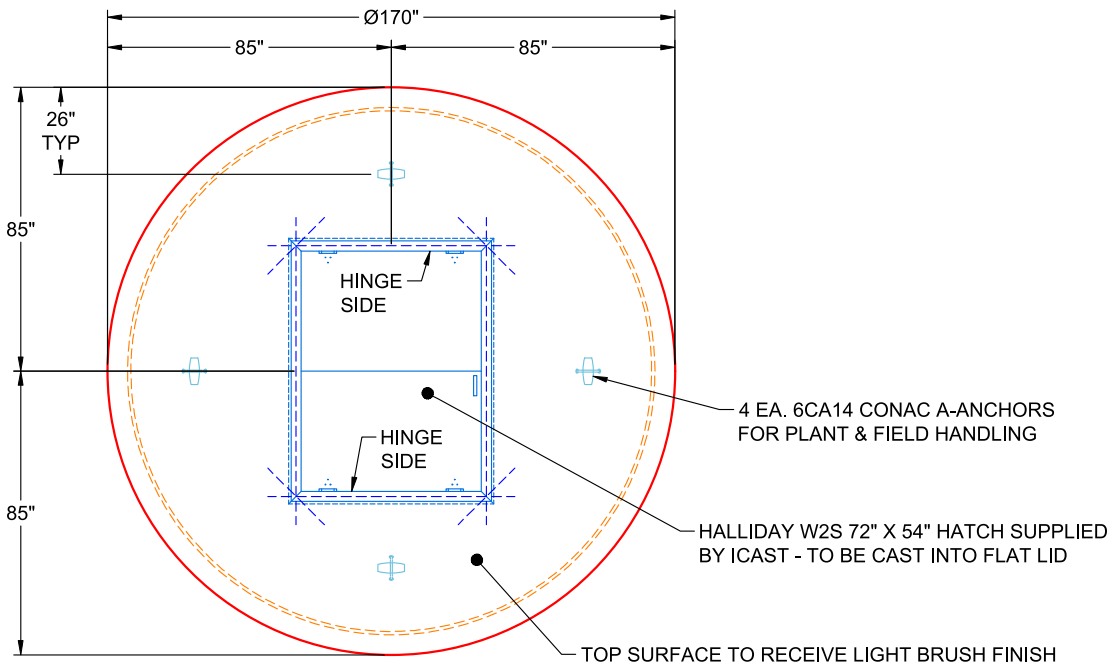
- P6) 72" x 54" - HATCH (CAST FLUSH) - 3"
- P5) 144" - MH FLAT TOP w/72"x54" Hatch w/Conblock CDA Red F/G - 18"
- P4) 144" - MH RISER Custom Ht, w/ConBlock-CDA Red T/G - 89"
- P3) 144" - MH RISER Custom Ht, w/ConBlock-CDA Red T/G - 89"
- P2) 144" - MH RISER Custom Ht, w/ConBlock-CDA Red T/G - 89"
- P1) 144" - MH BASE SLAB EXT. w/CONBLOCK CDA RED T/n - 18"
- 3) JOINT WRAP - 12" WD x 144" MAC WRAP
- 1) HATCH (Alum.) - HALLIDAY W2S 72"x54"
- 1) ADMIXTURE CONBLOCK CDA RED
- 1) This Structure Includes a Cast-In Item - W2S 72"x54" Hatch
- 4) 144" - Conseal CS-231 1.00" (Double)
- 2) Hole - 12
- 1) Hole - 16
- 1) Hole - 10

100 lb
 20910 lb
 47546 lb
 47666 lb
 47886 lb
 53193 lb
 0 lb
 188 lb
 0 lb
 0 lb
 0 lb
 0 lb
 0 lb
 0 lb

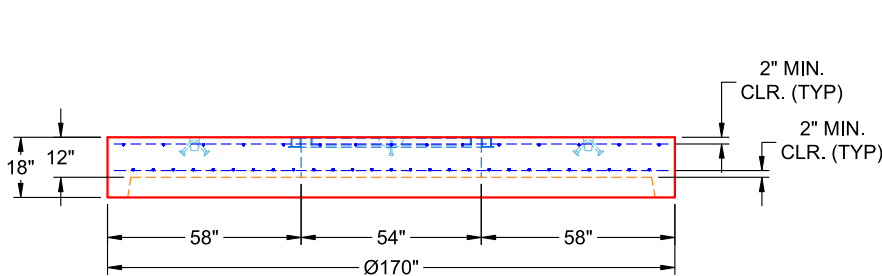
 217489 lb

- Structure Notes:**
1. PER ASTM C-478 SPECIFICATIONS
 2. CONCRETE: 5,000 PSI AT 28 DAYS
 3. REINFORCEMENT - 2" MIN. REBAR CLEARANCE (TYP):
 - TOP MAT: #4 BAR @ 12" C.C. E.W. (GRADE 60)
 - BOTTOM MAT: #5 BAR @ 6" C.C. E.W. (GRADE 60)
 4. HALLIDAY W2S 72" X 54" HATCH SUPPLIED BY ICAST - TO BE CAST INTO FLAT LID
 5. CONBLOCK CDA RED ADMIXTURE REQUIRED
 6. LIFTERS: 4 EA. 6CA14 CONAC A-ANCHORS FOR PLANT & FIELD HANDLING - INSTALLED AS SHOWN
 7. TOP SURFACE TO RECEIVE LIGHT BRUSH FINISH

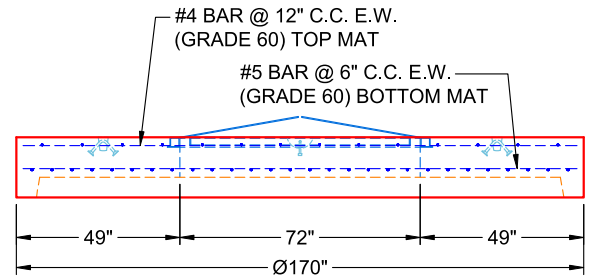
Structure Total: 217489 lb



**PLAN VIEW
(RIGHT SIDE UP)**



**FRONT VIEW
(RIGHT SIDE UP)**



**SIDE VIEW
(RIGHT SIDE UP)**

Coating (Int):
 Coating (Ext):

Seam Up: Flat
 Seam Dn: Groove

Wall Thickness: 13"

Height (Ext): 18"

Weight (Net): 20910 lb
 Volume (Net): 5.34cu.yd

Job Number:

25-3000

Job Name:

Wilkinson Lane PS

Structure:

WW1

Note:

Halliday W2S 72" x 54" Hatch

Supplied By iCast To Be Cast Into Flat
Lid