

Job Name: 25-3000 - Wilkinson Lane PS
 Job Location: White House, TN
 Contractor: Cumberland Valley Constructors, Inc.

Plant: 100
 1/12/2026 7:30:03 AM

Tech: J. Horsley - F
 PC: A. Chambers



Structure ID: V3

P1 BX4866-08W08F-BAVF

BOX BASE 8inW, 8inF, Variable Ht F/n

- P3) 36" x 48" - HATCH (CAST FLUSH) - 3"
- P2) 48" x 66" - CB FLAT TOP 8"W w/36"X48" Hatch F/F - 8"
- P1) 48" x 66" - BOX BASE 8inW, 8inF, Variable Ht F/n - 74"
- 1) JOINT WRAP - 0.065"x6"x50" CONSEAL CS212
- 1) JOINT WRAP PRIMER - CONSEAL CS-75 (1 gal.)
- 1) SECONDARY POUR
- 1) This Structure Includes a Cast-In Item - W1S 36" x 48" Hatch
- 1) HATCH (Alum.) - HALLIDAY W1S 36"x48"
- 1) 36" x 48" - Conseal CS-102 1.00" (Double)
- 2) Hole - 12
- 1) Hole - 5

100 lb
 2363 lb
 16274 lb
 0 lb
 0 lb
 0 lb
 0 lb
 97 lb
 0 lb
 0 lb
 0 lb

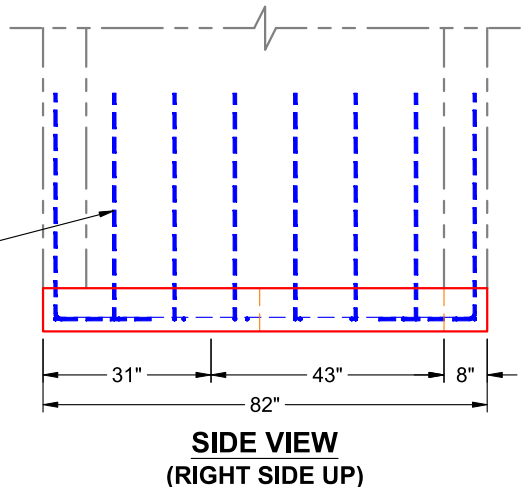
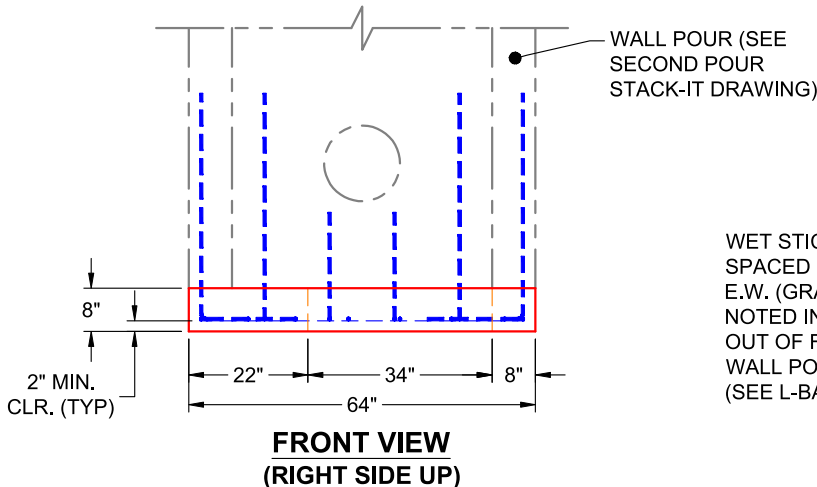
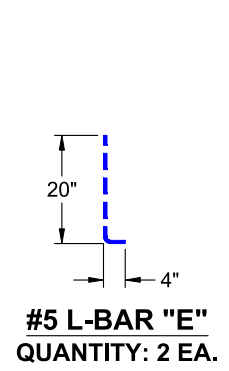
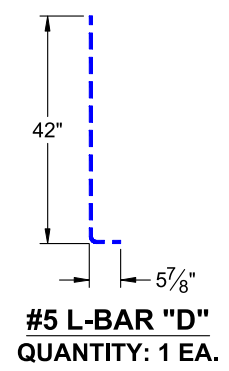
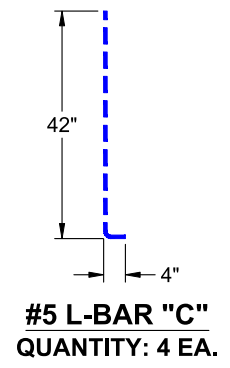
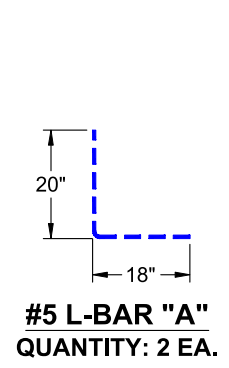
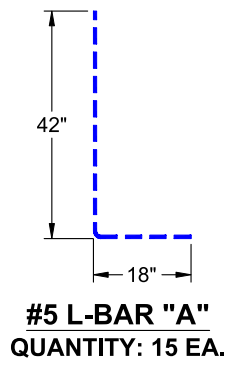
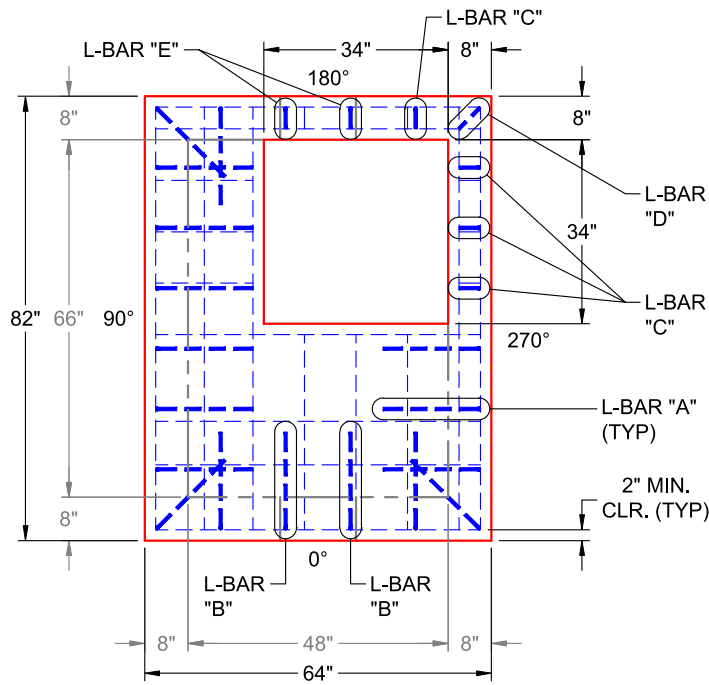
 Structure Total: 18834 lb

Structure Notes:

1. PER ASTM C-913 SPECIFICATIONS
2. CONCRETE: 4,000 PSI AT 28 DAYS
3. REINFORCEMENT: #5 BAR @ 12" C.C. E.W. (GRADE 60) - 2" MIN. REBAR CLEARANCE (TYP)
4. HATCH BY ICAST (HALLIDAY W1S 36" X 48") - TO BE CAST INTO FLAT LID
5. NO STEPS
6. GARLOCK LINK-SEAL CONNECTORS TO BE SUPPLIED BY OTHERS
7. WET STICK #5 L-BARS SPACED @ 12" C.C. (GRADE 60) OUT OF FLOOR FOR WALL POUR TIE-IN (SEE L-BAR DETAILS)

FIRST POUR (8" FLOOR): 3,523 LBS
SECOND POUR (74" WALLS): 12,751 LBS

Rim: 793.5' Rim to Invert: 5.2' Slack: -0.04" Sump: 19.56" Step Position:



Coating (Int): Coating (Ext):	Seam Up: Flat Seam Dn: n/a	Wall Thickness: 8" Floor Height: 8"	Height (Int): 74" Height (Ext): 82"	Weight (Net): 16224 lb Volume (Net): 4.14cu.yd
----------------------------------	-------------------------------	--	--	---

Job Name: 25-3000 - Wilkinson Lane PS
 Job Location: White House, TN
 Contractor: Cumberland Valley Constructors, Inc.

Plant: 100
 1/13/2026 2:18:34 PM

Tech: J. Horsley - F
 PC: A. Chambers



Structure ID: V3

P1 BX4866-08W08F-BAVF

BOX BASE 8inW, 8inF, Variable Ht F/n

- P3) 36" x 48" - HATCH (CAST FLUSH) - 3"
- P2) 48" x 66" - CB FLAT TOP 8"W w/36"X48" Hatch F/F - 8"
- P1) 48" x 66" - BOX BASE 8inW, 8inF, Variable Ht F/n - 74"
- 1) JOINT WRAP - 0.065"x6"x50' CONSEAL CS212
- 1) JOINT WRAP PRIMER - CONSEAL CS-75 (1 gal.)
- 1) SECONDARY POUR
- 1) This Structure Includes a Cast-In Item - W1S 36" x 48" Hatch
- 1) HATCH (Alum.) - HALLIDAY W1S 36"x48"
- 1) 36" x 48" - Conseal CS-102 1.00" (Double)
- 2) Hole - 12
- 1) Hole - 5

100 lb
 2363 lb
 16274 lb
 0 lb
 0 lb
 0 lb
 0 lb
 97 lb
 0 lb
 0 lb
 0 lb

 Structure Total: 18834 lb

- Structure Notes:
1. PER ASTM C-913 SPECIFICATIONS
 2. CONCRETE: 4,000 PSI AT 28 DAYS
 3. REINFORCEMENT: #5 BAR @ 12" C.C. E.W. (GRADE 60) - 2" MIN. REBAR CLEARANCE (TYP)
 4. HATCH BY ICAST (HALLIDAY W1S 36" X 48") - TO BE CAST INTO FLAT LID
 5. NO STEPS
 6. GARLOCK LINK-SEAL CONNECTORS TO BE SUPPLIED BY OTHERS
 7. LIFTERS: 4 EA. 5CA15 CONAC A-ANCHORS FOR PLANT & FIELD HANDLING - INSTALLED IN 90° & 270° WALLS, MIN. 16" FROM TOP OF WALLS

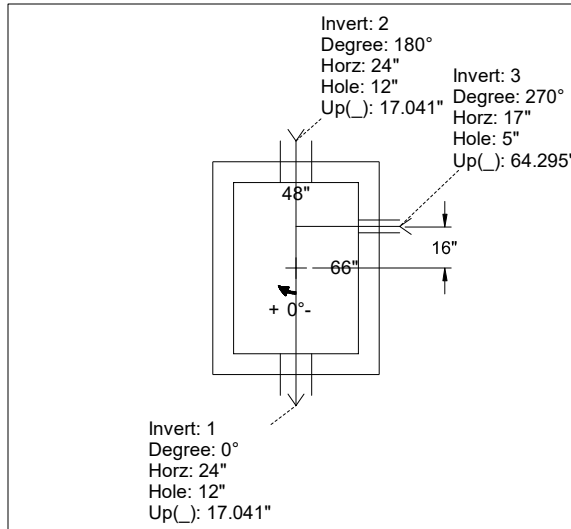
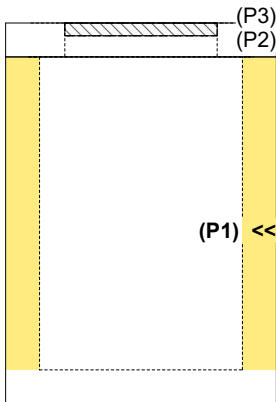
FIRST POUR (8" FLOOR): 3,523 LBS
SECOND POUR (74" WALLS): 12,751 LBS

Rim: 793.5' Rim to Invert: 5.2' Slack: -0.04" Sump: 19.56" Step Position:

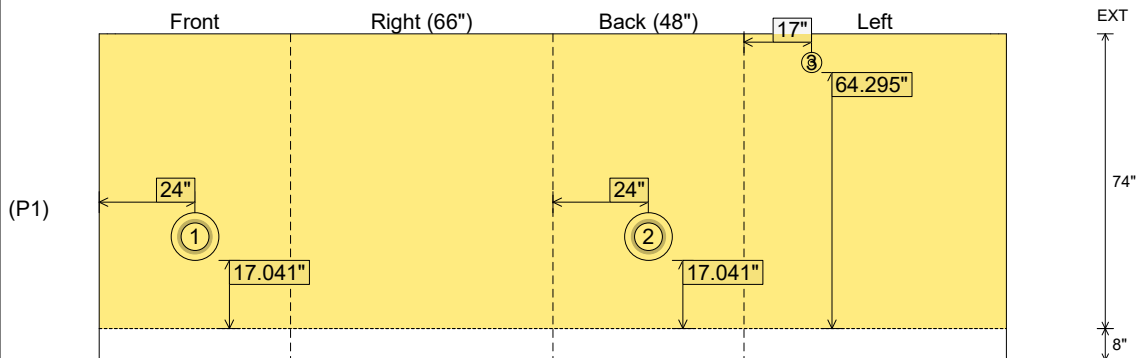
Position	Elev	Angle	Ext. (cw)	Pipe	Pipe OD	Connector	Hole	Horz Size	Up ()	Offset
Invert 1	788.3'	0°	32"	8" HDPE DR11	8.625"	Hole 12	12"	12"	17.041"	0"
Invert 2	788.3'	180°	32"	8" HDPE DR11	8.625"	Hole 12	12"	12"	17.041"	0"
Invert 3	792.17'	270°	25"	1.5" PVC SCH40	1.9"	Hole 5	5"	5"	64.295"	-16"
Invert 4										
Invert 5										
Invert 6										
Invert 7										
Invert 8										

RIGHT-SIDE UP VIEW (int. dimensions)

UPSIDE-DOWN VIEW (int. dimensions)



INSIDE WALL DIMENSIONS



Coating (Int):
 Coating (Ext):

Seam Up: Flat
 Seam Dn: n/a

Wall Thickness: 8"
 Floor Height: 8"

Height (Int): 74"
 Height (Ext): 82"

Weight (Net): 16274 lb
 Volume (Net): 4.16cu.yd