

Job Name: 25-3000 - Wilkinson Lane PS
 Job Location: White House, TN
 Contractor: Cumberland Valley Constructors, Inc.

Plant: 100
 1/12/2026 7:32:47 AM

Tech: J. Horsley - F
 PC: A. Chambers



Structure ID: V2

P2 BX120120-08LD08-S

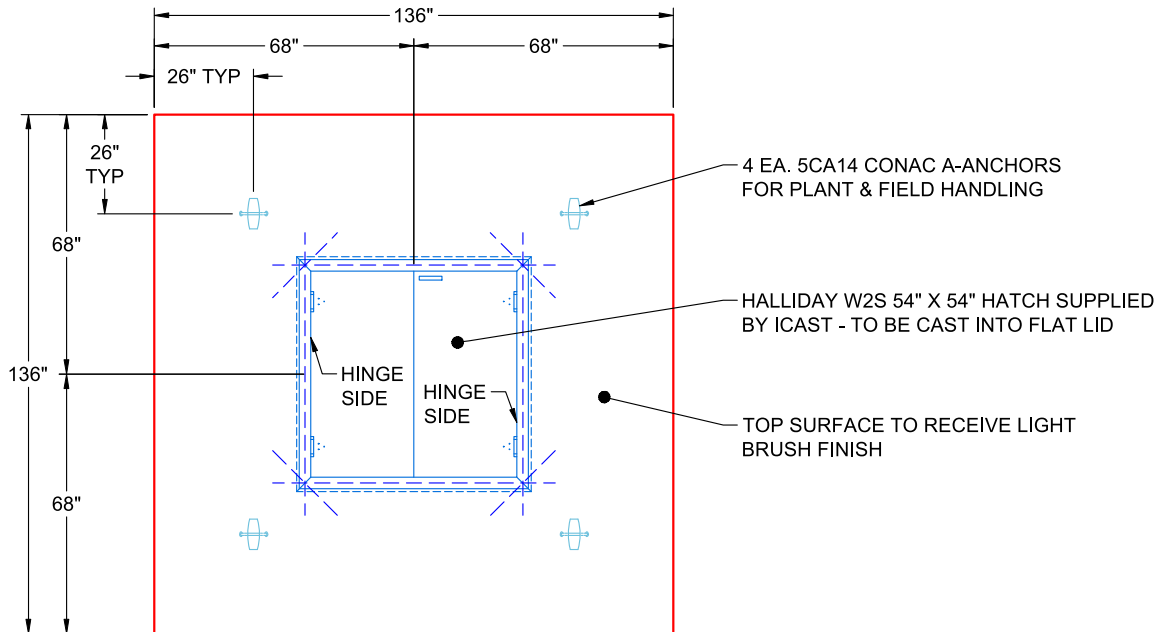
CB FLAT TOP 8"W w/54"X54" HATCH F/F

- P3) 54" x 54" - HATCH (CAST FLUSH) - 3"
- P2) 120" x 120" - CB FLAT TOP 8"W w/54"X54" HATCH F/F - 8"
- P1) 120" x 120" - BOX BASE 8inW, 8inF, Variable Ht F/n - 74"
- 1) JOINT WRAP - 0.065"x6"x50' CONSEAL CS212
- 1) JOINT WRAP PRIMER - CONSEAL CS-75 (1 gal.)
- 1) SECONDARY POUR
- 1) HATCH (Alum.) - HALLIDAY W2S 54"x54"
- 1) This Structure Includes a Cast-In Item - W2S 54" x 54" Hatch
- 1) 54" x 54" - Conseal CS-102 1.00" (Double)
- 3) Hole - 12
- 1) Hole - 10
- 1) Hole - 5

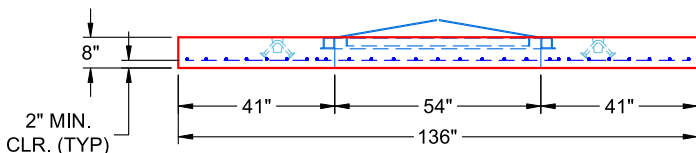
100 lb
 10459 lb
 37557 lb
 0 lb
 0 lb
 0 lb
 149 lb
 0 lb
 0 lb
 0 lb
 0 lb
 0 lb

 Structure Total: 48264 lb

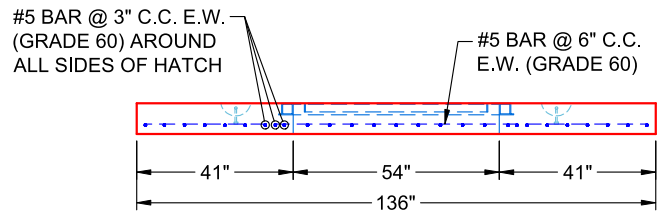
- Structure Notes:**
1. PER ASTM C-913 SPECIFICATIONS
 2. CONCRETE: 4,000 PSI AT 28 DAYS
 3. REINFORCEMENT: #5 BAR @ 6" C.C. E.W. (GRADE 60) - 2" MIN. REBAR CLEARANCE (TYP)
 4. HATCH BY ICAST (HALLIDAY W2S 54" X 54") - TO BE CAST INTO FLAT LID
 5. LIFTERS: 4 EA. 5CA14 CONAC A-ANCHORS FOR PLANT & FIELD HANDLING - INSTALLED AS SHOWN
 6. TOP SURFACE TO RECEIVE LIGHT BRUSH FINISH



**PLAN VIEW
(RIGHT SIDE UP)**



**FRONT VIEW
(RIGHT SIDE UP)**



**SIDE VIEW
(RIGHT SIDE UP)**

Coating (Int):
 Coating (Ext):

Seam Up: Flat
 Seam Dn: Flat

Wall Thickness: 8"

Height (Ext): 8"

Weight (Net): 10459 lb
 Volume (Net): 2.67cu.yd

Job Number:

25-3000

Job Name:

Wilkinson Lane PS

Structure:

V2

Note:

Halliday W2S 54" x 54" Hatch

Supplied By iCast To Be Cast Into Flat
Lid