

Job Name: 25-3000 - Wilkinson Lane PS
 Job Location: White House, TN
 Contractor: Cumberland Valley Constructors, Inc.

Plant: 100
 1/12/2026 7:30:01 AM

Tech: J. Horsley - F
 PC: A. Chambers



Structure ID: V2

P1 BX120120-08BAVF

BOX BASE 8inW, 8inF, Variable Ht F/n

- P3) 54" x 54" - HATCH (CAST FLUSH) - 3"
- P2) 120" x 120" - CB FLAT TOP 8"W w/54"x54" HATCH F/F - 8"
- P1) 120" x 120" - BOX BASE 8inW, 8inF, Variable Ht F/n - 74"
- 1) JOINT WRAP - 0.065"x6"x50' CONSEAL CS212
- 1) JOINT WRAP PRIMER - CONSEAL CS-75 (1 gal.)
- 1) SECONDARY POUR
- 1) HATCH (Alum.) - HALLIDAY W2S 54"x54"
- 1) This Structure Includes a Cast-In Item - W2S 54" x 54" Hatch
- 1) 54" x 54" - Conseal CS-102 1.00" (Double)
- 3) Hole - 12
- 1) Hole - 10
- 1) Hole - 5

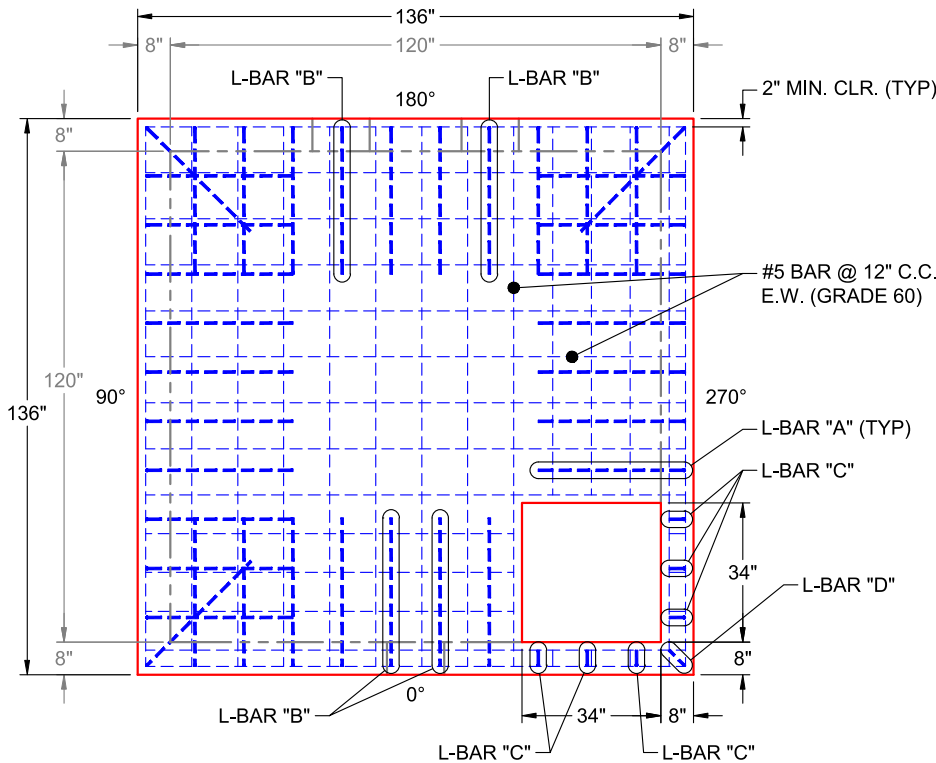
100 lb
 10459 lb
 37557 lb
 0 lb
 0 lb
 0 lb
 149 lb
 0 lb
 0 lb
 0 lb
 0 lb
 0 lb
 Structure Total: 48264 lb

Structure Notes:

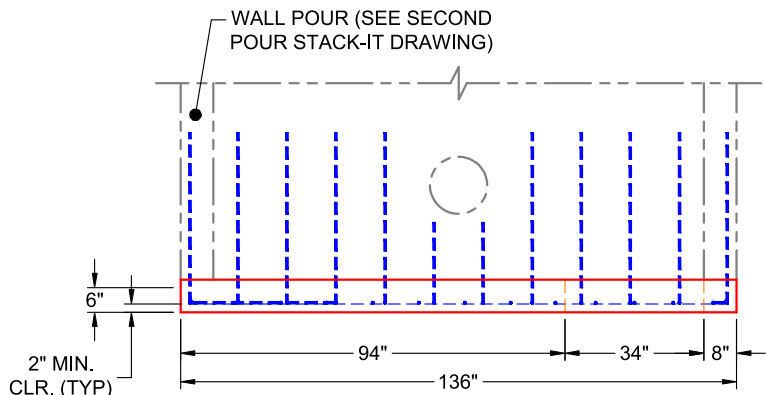
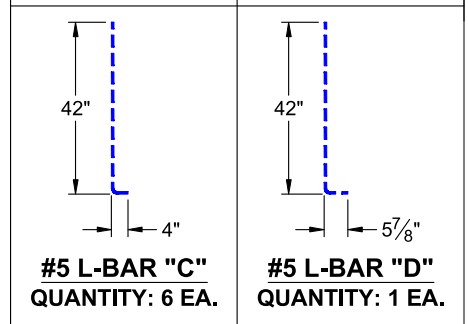
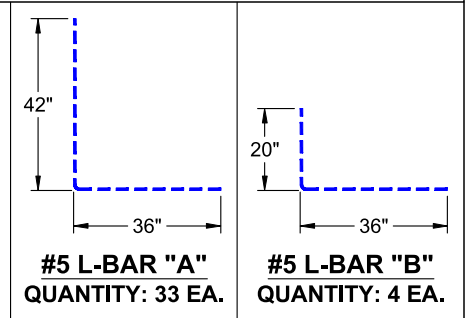
1. PER ASTM C-913 SPECIFICATIONS
2. CONCRETE: 4,000 PSI AT 28 DAYS
3. REINFORCEMENT: #5 BAR @ 12" C.C. E.W. (GRADE 60) - 2" MIN. REBAR CLEARANCE (TYP)
4. HATCH BY ICAST (HALLIDAY W2S 54" X 54") - TO BE CAST INTO FLAT LID
5. NO STEPS
6. GARLOCK LINK-SEAL CONNECTORS TO BE SUPPLIED BY OTHERS
7. WET STICK #5 L-BARS SPACED @ 12" C.C. (GRADE 60) OUT OF FLOOR FOR WALL POUR TIE-IN (SEE L-BAR DETAILS)

FIRST POUR (8" FLOOR): 12,416 LBS
SECOND POUR (74" WALLS): 25,141 LBS

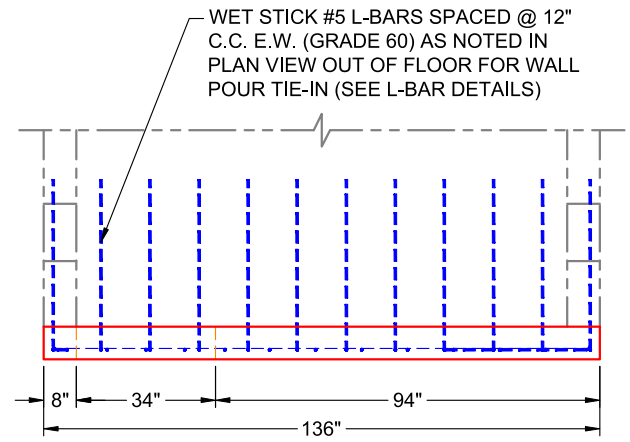
Rim: 793.2' Rim to Invert: 5.2' Slack: -0.04" Sump: 19.56" Step Position:



**PLAN VIEW
(RIGHT SIDE UP)**



**FRONT VIEW
(RIGHT SIDE UP)**



**SIDE VIEW
(RIGHT SIDE UP)**

Coating (Int):
 Coating (Ext):

Seam Up: Flat
 Seam Dn: n/a

Wall Thickness: 8"
 Floor Height: 8"

Height (Int): 74"
 Height (Ext): 82"

Weight (Net): 37479 lb
 Volume (Net): 9.57cu.yd

Job Name: 25-3000 - Wilkinson Lane PS
 Job Location: White House, TN
 Contractor: Cumberland Valley Constructors, Inc.

Plant: 100
 1/13/2026 2:18:32 PM

Tech: J. Horsley - F
 PC: A. Chambers



Structure ID: V2

P1 BX120120-08BAVF

BOX BASE 8inW, 8inF, Variable Ht F/n

- P3) 54" x 54" - HATCH (CAST FLUSH) - 3"
- P2) 120" x 120" - CB FLAT TOP 8"W w/54"x54" HATCH F/F - 8"
- P1) 120" x 120" - BOX BASE 8inW, 8inF, Variable Ht F/n - 74"
- 1) JOINT WRAP - 0.065"x6"x50' CONSEAL CS212
- 1) JOINT WRAP PRIMER - CONSEAL CS-75 (1 gal.)
- 1) SECONDARY POUR
- 1) HATCH (Alum.) - HALLIDAY W2S 54"x54"
- 1) This Structure Includes a Cast-In Item - W2S 54" x 54" Hatch
- 1) 54" x 54" - Conseal CS-102 1.00" (Double)
- 3) Hole - 12
- 1) Hole - 10
- 1) Hole - 5

100 lb
 10459 lb
 37557 lb
 0 lb
 0 lb
 0 lb
 149 lb
 0 lb
 0 lb
 0 lb
 0 lb
 0 lb
 0 lb

Structure Notes:

1. PER ASTM C-913 SPECIFICATIONS
2. CONCRETE: 4,000 PSI AT 28 DAYS
3. REINFORCEMENT: #5 BAR @ 12" C.C. E.W. (GRADE 60) - 2" MIN. REBAR CLEARANCE (TYP)
4. HATCH BY ICAST (HALLIDAY W2S 54" X 54") - TO BE CAST INTO FLAT LID
5. NO STEPS
6. GARLOCK LINK-SEAL CONNECTORS TO BE SUPPLIED BY OTHERS
7. LIFTERS: 4 EA. 8CA18 CONAC A-ANCHORS FOR PLANT & FIELD HANDLING - INSTALLED IN 90° & 270° WALLS, MIN. 16" FROM TOP OF WALLS

Structure Total: 48264 lb

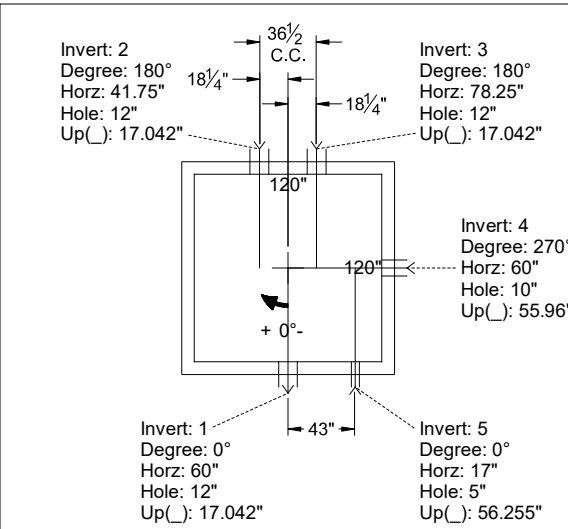
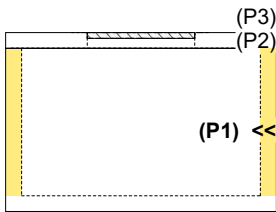
FIRST POUR (8" FLOOR): 12,416 LBS
SECOND POUR (74" WALLS): 25,141 LBS

Rim: 793.2' Rim to Invert: 5.2' Slack: -0.04" Sump: 19.56" Step Position:

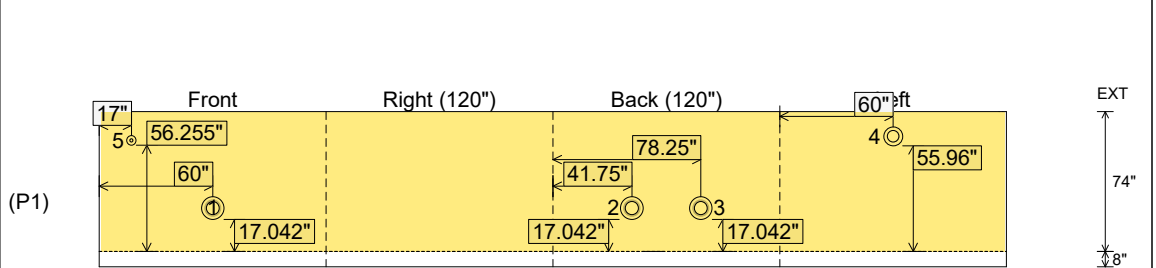
Position	Elev	Angle	Ext. (cw)	Pipe	Pipe OD	Connector	Hole	Horz Size	Up ()	Offset
Invert 1	788'	0°	68"	8" HDPE DR11	8.625"	Hole 12	12"	12"	17.042"	0"
Invert 2	788'	180°	49.75"	8" HDPE DR11	8.625"	Hole 12	12"	12"	17.042"	-18.25"
Invert 3	788'	180°	86.25"	8" HDPE DR11	8.625"	Hole 12	12"	12"	17.042"	18.25"
Invert 4	791.2'	270°	68"	6" PVC SDR35	6.25"	Hole 10	10"	10"	55.96"	0"
Invert 5	791.2'	0°	25"	1.5" PVC SCH40	1.9"	Hole 5	5"	5"	56.255"	-43"
Invert 6										
Invert 7										
Invert 8										

RIGHT-SIDE UP VIEW (int. dimensions)

UPSIDE-DOWN VIEW (int. dimensions)



INSIDE WALL DIMENSIONS



Coating (Int):
 Coating (Ext):

Seam Up: Flat
 Seam Dn: n/a

Wall Thickness: 8"
 Floor Height: 8"

Height (Int): 74"
 Height (Ext): 82"

Weight (Net): 37557 lb
 Volume (Net): 9.59cu.yd