

**Job Name: 25-3000 - Wilkinson Lane PS**  
**Job Location: White House, TN**  
**Contractor: Cumberland Valley Constructors, Inc.**

PC: A. Chambers  
 TECH: J. Horsley - F  
 Plant: 100



Structure ID: **V1**  
 Spec: Sanitary  
 Type: Valve Vault 8inW, 8inF  
 Size: 60" x 60"

Rim: 793.2'  
 Invert: 781.54'  
 Rim to Invert: 11.66'

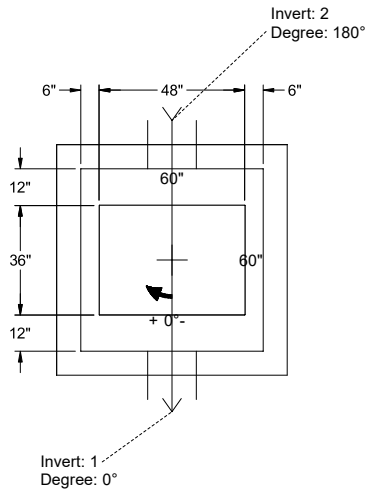
Sump: 18.48"  
 Floor (Top): 780'  
 Floor Height: 8"

Floor (Bot): 779.333'  
 Overall Height: 13.833'  
 Slack: 0.4"

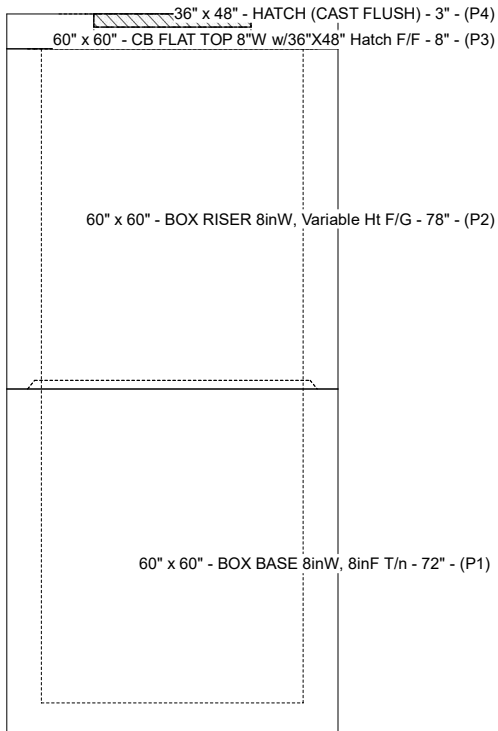
- Structure Notes:**
- PER ASTM C-913 SPECIFICATIONS
  - CONCRETE: 4,000 PSI AT 28 DAYS
  - REINFORCEMENT:
    - FLAT LID: #5 BAR @ 6" C.C. E.W. (GRADE 60)
    - BASE & RISER: #5 BAR @ 12" C.C. E.W. (GRADE 60)
  - HATCH BY ICAST (HALLIDAY W1S 36" X 48") - TO BE CAST INTO FLAT LID
  - NO STEPS
  - GARLOCK LINK-SEAL CONNECTORS TO BE SUPPLIED BY OTHERS
  - ANY REQUIRED COATINGS TO BE SUPPLIED BY OTHERS

**STRUCTURE SUMMARY:**

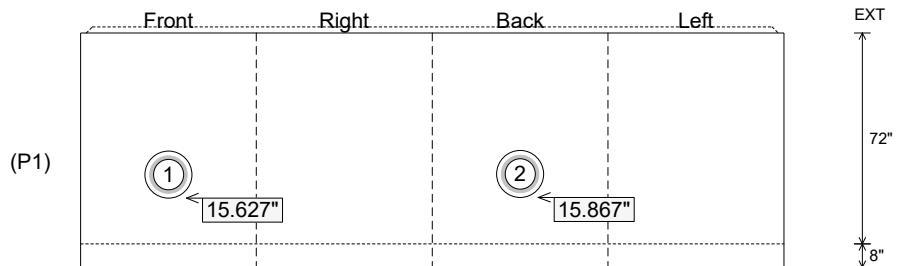
P4) 36" x 48" - HATCH (CAST FLUSH) - 3"	100 lb
P3) 60" x 60" - CB FLAT TOP 8"W w/36"X48" Hatch F/F - 8"	2717 lb
P2) 60" x 60" - BOX RISER 8inW, Variable Ht F/G - 78"	14242 lb
P1) 60" x 60" - BOX BASE 8inW, 8inF T/n - 72"	16754 lb
1) JOINT WRAP - 0.065"x6"x50' CONSEAL CS212	0 lb
1) HATCH (Alum.) - HALLIDAY W1S 36"x48"	97 lb
1) JOINT WRAP PRIMER - CONSEAL CS-75 (1 gal.)	0 lb
1) SECONDARY POUR	0 lb
1) This Structure Includes a Cast-In Item - W1S 36" x 48" Hatch	0 lb
2) 60" x 60" - Conseal CS-102 1.00" (Double)	0 lb
1) 36" x 48" - Conseal CS-102 1.00" (Double)	0 lb
2) Hole - 16"	0 lb
	-----
<b>Structure Total:</b>	<b>33911 lb</b>



Position	Elev	Angle	Pipe	Pipe OD	Hole	Connector	Up (")	Ref
Rim	793.2'							
Reducer								
Invert 1	781.54'	0°	12" HDPE DR11	12.75"	16"	Hole 16	15.627"	P1
Invert 2	781.56'	180°	12" HDPE DR11	12.75"	16"	Hole 16	15.867"	P1
Invert 3								
Invert 4								
Invert 5								
Invert 6								
Invert 7								
Invert 8								



**Cast (Int. Dim.) - Interior Dimensions**



Submittal Drawing  
 1/9/2026 2:41:27 PM

SUBMITTAL  
 APPROVED BY: