

Job Name: 25-3000 - Wilkinson Lane PS
 Job Location: White House, TN
 Contractor: Cumberland Valley Constructors, Inc.

Plant: 100
 1/12/2026 7:32:44 AM

Tech: J. Horsley - F
 PC: A. Chambers



Structure ID: A1

P3 MH096LD17ECC

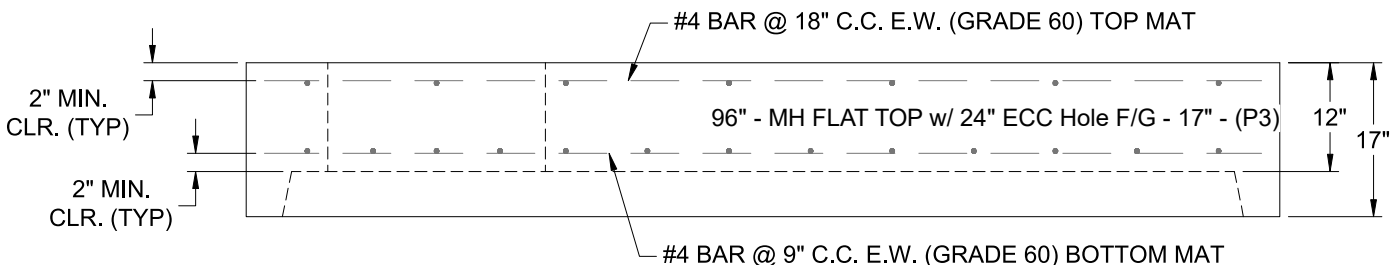
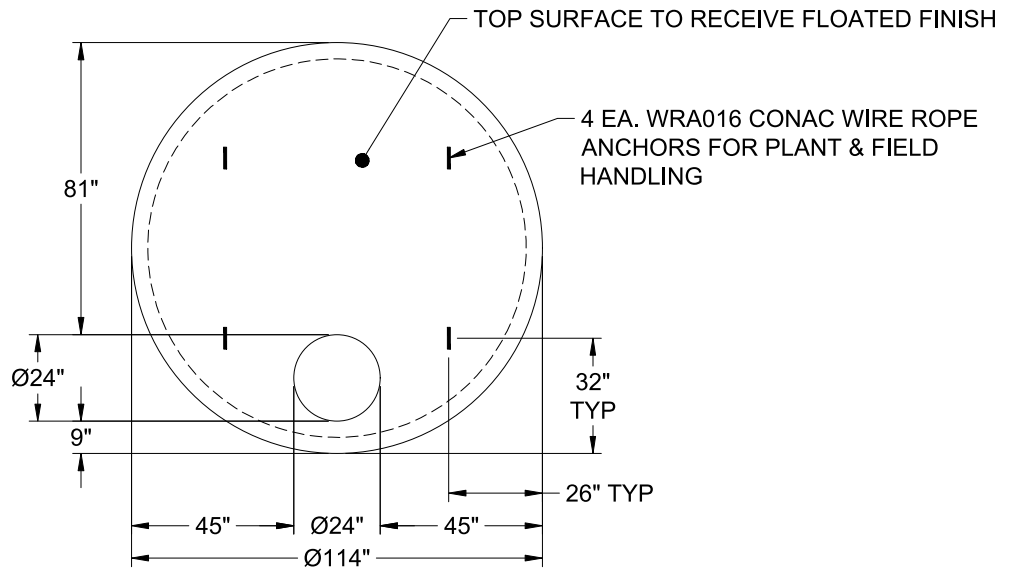
MH FLAT TOP w/ 24" ECC Hole F/G

- P4) 24" - CASTING HEIGHT - 6"
- P3) 96" - MH FLAT TOP w/ 24" ECC Hole F/G - 17"
- P2) 96" - MH RISER T/G - 84"
- P1) 96" - MH BASE Custom Ht T/n - 40"
- 1) JOINT WRAP - 0.065"x6"x50" CONSEAL CS212
- 1) JOINT WRAP PRIMER - CONSEAL CS-75 (1 gal.)
- 1) SECONDARY POUR
- 1) CASTING - JBS 1155 F/C SANITARY
- 2) 96" - Conseal CS-102 1.00" (Double)
- 1) PSX - 16M DD
- 1) PSX - 12-08 DD
- 9) MH Step ML-10-TDS-NCR - 10"

0 lb
 10472 lb
 20840 lb
 16664 lb
 0 lb
 0 lb
 0 lb
 250 lb
 0 lb
 8 lb
 8 lb
 0 lb

Structure Total: 48243 lb

- Structure Notes:**
1. PER ASTM C-478 SPECIFICATIONS
 2. CONCRETE: 4,000 PSI AT 28 DAYS
 3. REINFORCEMENT - 2" MIN. REBAR CLEARANCE (TYP):
 - TOP MAT: #4 BAR @ 18" C.C. E.W. (GRADE 60)
 - BOTTOM MAT: #4 BAR @ 9" C.C. E.W. (GRADE 60)
 4. CASTING BY ICAST (JBS 1155 FRAME & COVER "SANITARY")
 5. LIFTERS: 4 EA. WRA016 CONAC WIRE ROPE ANCHORS FOR PLANT & FIELD HANDLING (INSTALLED AS SHOWN)
 6. TOP SURFACE TO RECEIVE FLOATED FINISH



Coating (Int):
 Coating (Ext):

Seam Up: Flat
 Seam Dn: Groove

Wall Thickness: 9"

Height (Ext): 17"

Weight (Net): 10472 lb
 Volume (Net): 2.68cu.yd