

Structure ID: A1

P1 MH096BAVF

MH BASE Custom Ht T/n

- | | |
|--|--|
| P4) 24" - CASTING HEIGHT - 6"
P3) 96" - MH FLAT TOP w/ 24" ECC Hole F/G - 17"
P2) 96" - MH RISER T/G - 84"
P1) 96" - MH BASE Custom Ht T/n - 40"
1) JOINT WRAP - 0.065"x6"x50' CONSEAL CS212
1) JOINT WRAP PRIMER - CONSEAL CS-75 (1 gal.)
1) SECONDARY POUR
1) CASTING - JBS 1155 F/C SANITARY
2) 96" - Conseal CS-102 1.00" (Double)
1) PSX - 16M DD
1) PSX - 12-08 DD
9) MH Step ML-10-TDS-NCR - 10" | 0 lb
10472 lb
20840 lb
16664 lb
0 lb
0 lb
0 lb
250 lb
0 lb
8 lb
8 lb
0 lb |
|--|--|

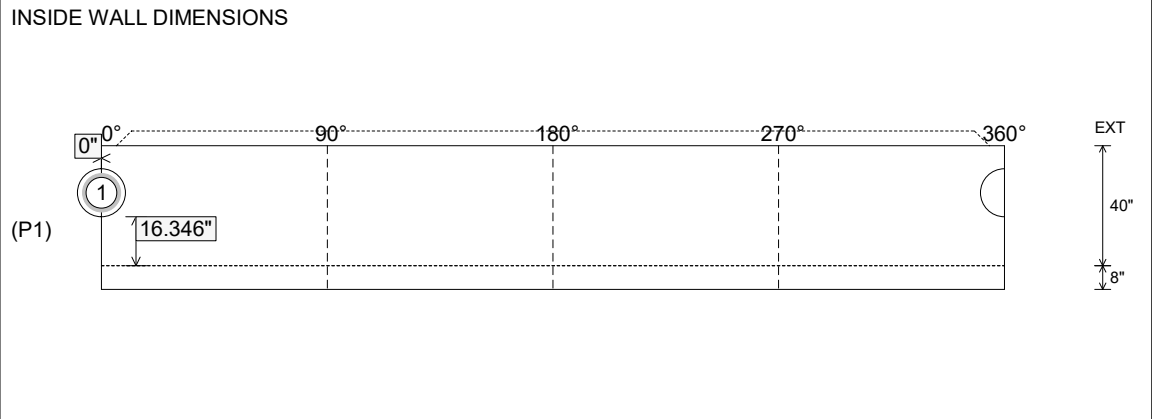
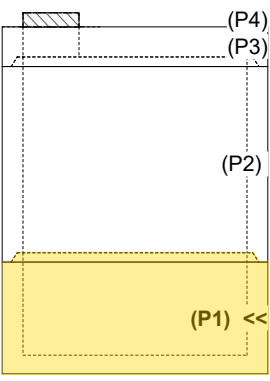
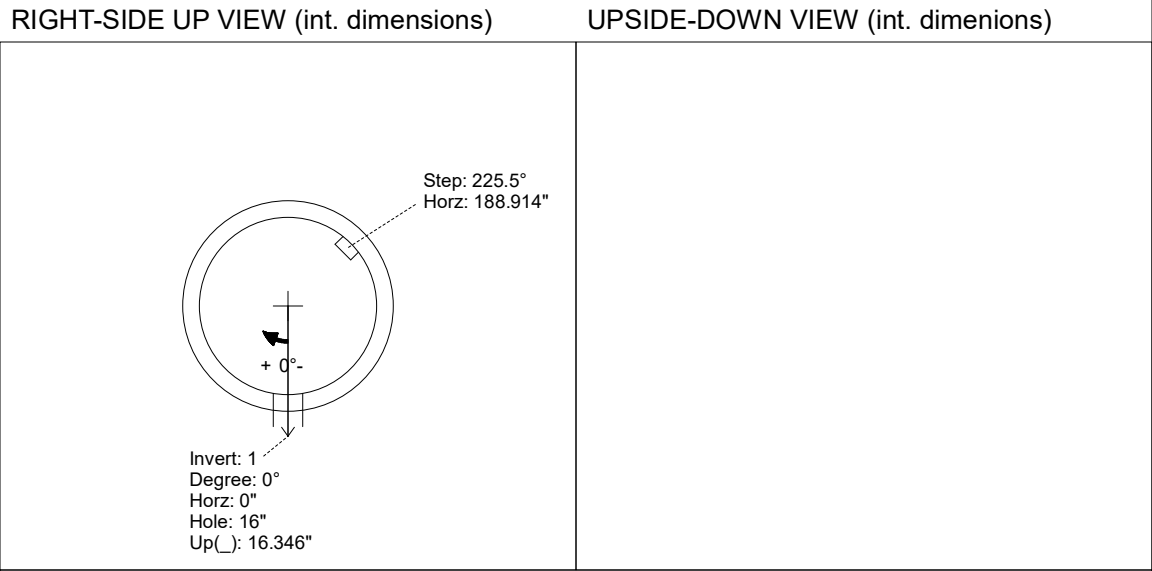
- Structure Notes:**
1. PER ASTM C-478 SPECIFICATIONS
 2. CONCRETE: 4,000 PSI AT 28 DAYS
 3. REINFORCEMENT: PER ASTM A615
 4. CASTING BY ICAST (JBS 1155 FRAME & COVER "SANITARY")
 5. STEPS AT 225.5 DEGREES
 6. DROP BOWL & DOWN PIPE SUPPLIED BY OTHERS
 7. LIFTERS: 4 EA. 5CA18 CONAC A-ANCHORS FOR PLANT & FIELD HANDLING - INSTALLED IN INNER SIDE OF WALLS @ 45°, 135°, 225°, & 315°, MIN. 12" FROM TOP OF WALLS

FIRST POUR (48" RISER / WALLS): 11,804 LBS
SECOND POUR (8" FLOOR): 4,860 LBS

Structure Total: 48243 lb

Rim: 792.4' Rim to Invert: 10.8' Slack: 1.8" Sump: 19.2" Step Position: 225.5°

Position	Elev	Angle	Ext. (cw)	Pipe	Pipe OD	Connector	Hole	Horz Size	Up ()	Offset
Invert 1	781.6'	0°	0"	12" HDPE DR11	12.75"	PSX 16M DD	16"	16.075"	16.346"	0"
Invert 2										
Invert 3										
Invert 4										
Invert 5										
Invert 6										
Invert 7										
Invert 8										



Coating (Int): Coating (Ext):	Seam Up: Tongue Seam Dn: n/a	Wall Thickness: 9" Floor Height: 8"	Height (Int): 40" Height (Ext): 48"	Weight (Net): 16664 lb Volume (Net): 4.26cu.yd
----------------------------------	---------------------------------	--	--	---

Job Name: 25-3000 - Wilkinson Lane PS
 Job Location: White House, TN
 Contractor: Cumberland Valley Constructors, Inc.

Plant: 100
 1/12/2026 7:29:56 AM

Tech: J. Horsley - F
 PC: A. Chambers



Structure ID: A1

P1 MH096BAVF

MH BASE Custom Ht T/n

- P4) 24" - CASTING HEIGHT - 6"
- P3) 96" - MH FLAT TOP w/ 24" ECC Hole F/G - 17"
- P2) 96" - MH RISER T/G - 84"
- P1) 96" - MH BASE Custom Ht T/n - 40"
- 1) JOINT WRAP - 0.065"x6"x50' CONSEAL CS212
- 1) JOINT WRAP PRIMER - CONSEAL CS-75 (1 gal.)
- 1) SECONDARY POUR
- 1) CASTING - JBS 1155 F/C SANITARY
- 2) 96" - Conseal CS-102 1.00" (Double)
- 1) PSX - 16M DD
- 1) PSX - 12-08 DD
- 9) MH Step ML-10-TDS-NCR - 10"

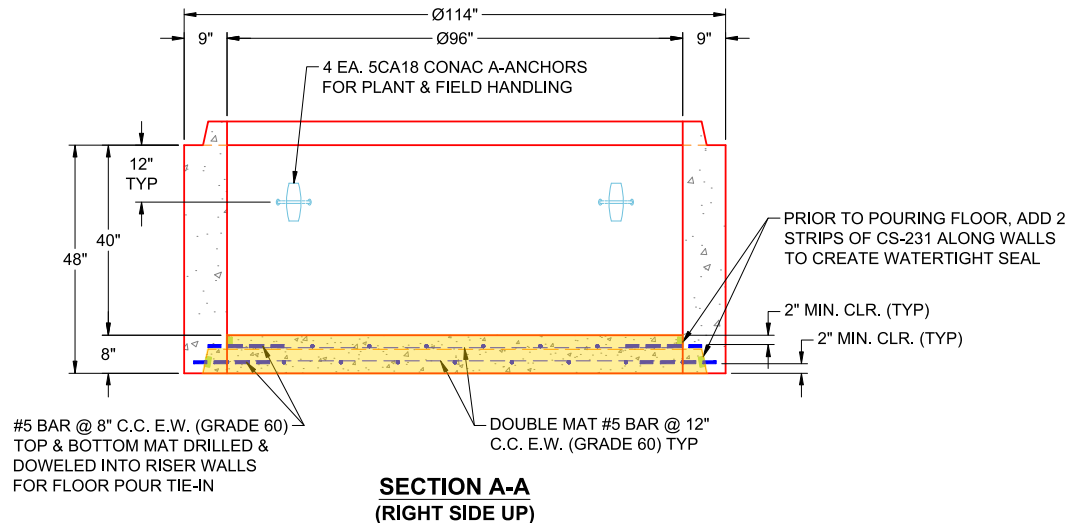
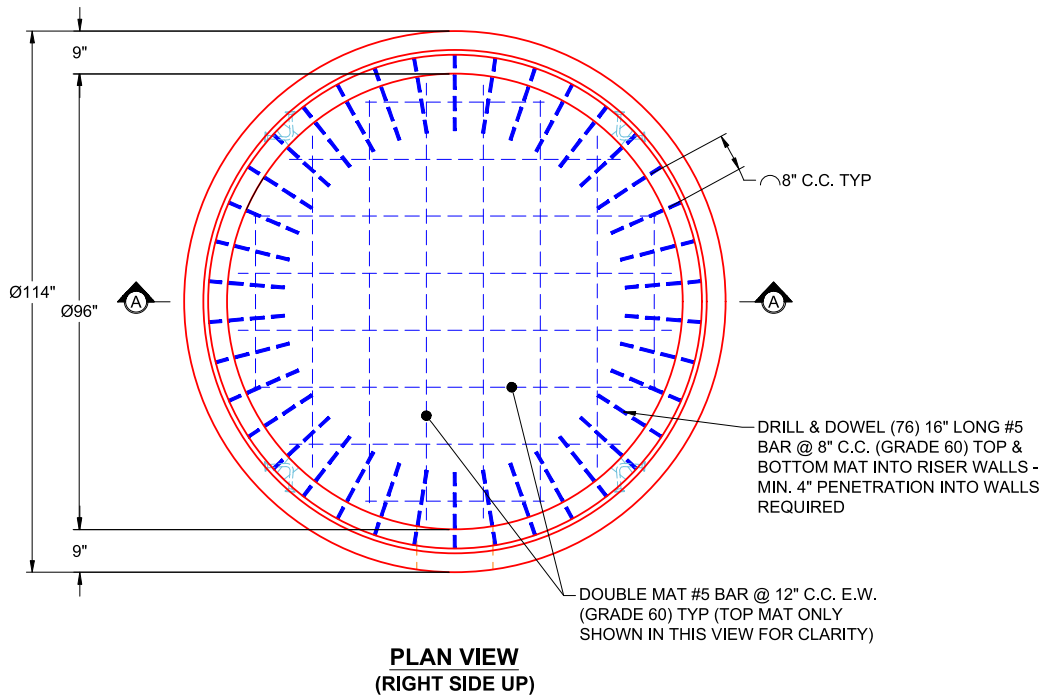
0 lb
 10472 lb
 20840 lb
 16664 lb
 0 lb
 0 lb
 0 lb
 250 lb
 0 lb
 8 lb
 8 lb
 0 lb

 Structure Total: 48243 lb

- Structure Notes:**
1. PER ASTM C-478 SPECIFICATIONS
 2. CONCRETE: 4,000 PSI AT 28 DAYS
 3. REINFORCEMENT - 2" MIN. REBAR CLEARANCE (TYP):
 - FLOOR POUR TIE-IN: DRILL & DOWEL (76) 16" LONG #5 BAR @ 8" C.C. E.W. (GRADE 60) TOP & BOTTOM MATS INTO RISER WALLS
 - FLOOR MAT: DOUBLE MAT #5 BAR @ 12" C.C. E.W. (GRADE 60)
 4. CASTING BY ICAST (JBS 1155 FRAME & COVER "SANITARY")
 5. STEPS AT 225.5 DEGREES
 6. DROP BOWL & DOWN PIPE SUPPLIED BY OTHERS

FIRST POUR (48" RISER / WALLS): 11,804 LBS
SECOND POUR (8" FLOOR): 4,860 LBS

Rim: 792.4' Rim to Invert: 10.8' Slack: 1.8" Sump: 19.2' Step Position: 225.5°



Coating (Int): Coating (Ext):	Seam Up: Tongue Seam Dn: n/a	Wall Thickness: 9" Floor Height: 8"	Height (Int): 40" Height (Ext): 48"	Weight (Net): 16664 lb Volume (Net): 4.26cu.yd
----------------------------------	---------------------------------	--	--	---