

Job Name: 25-2991 BHS Addition & Renovation Ph 2
 Job Location: Bardstown, KY
 Contractor: Parker Excavating, LLC

Plant: 100
 1/13/2026 3:49:35 PM

Tech: J. Horsley - A
 PC: Erica Bradley



Structure ID: DI-9D

P1 MH048BA42

MH BASE T/n

- P4) 24" - CASTING HEIGHT - 7"
- P3) 24" - GRADE RING F/F - 4"
- P2) 48" - MH FLAT TOP w/ 24" ECC Hole F/G - 12"
- P1) 48" - MH BASE T/n - 42"
- 1) CASTING - HOE MCB-350-R F/G
- 1) 48" - Conseal CS-102 1.00"
- 2) Hole - 20
- 3) MH Step ML-10-TDS-NCR - 10"

0 lb
 270 lb
 1561 lb
 3957 lb
 288 lb
 0 lb
 0 lb
 0 lb

 6076 lb

Structure Total: 6076 lb

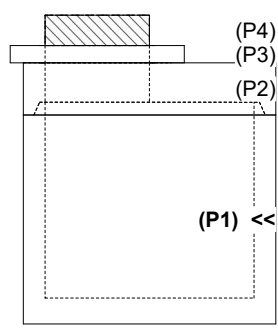
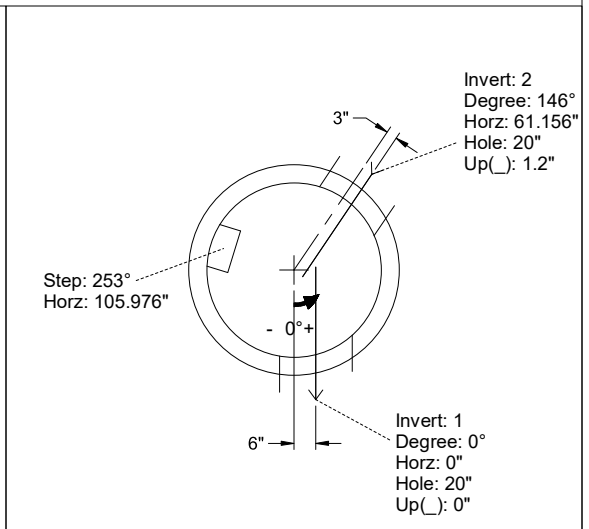
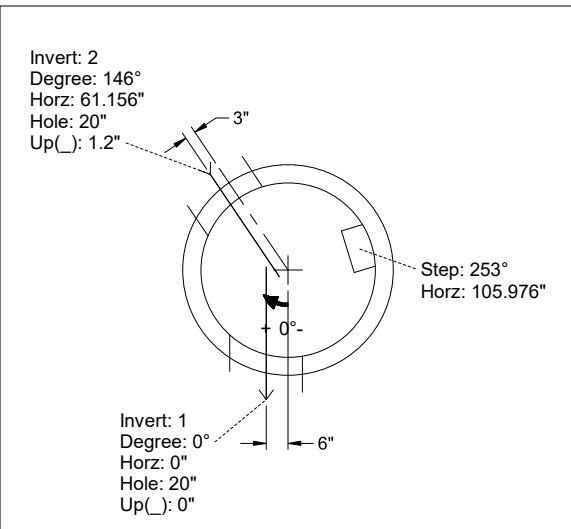
- Structure Notes:**
1. PER ASTM C-478 SPECIFICATIONS
 2. CONCRETE: 4,000 PSI AT 28 DAYS
 3. REINFORCEMENT: PER ASTM A615
 4. NO STORM INVERT
 5. STEPS AT 253 DEGREES
 6. HOE MCB-350R FRAME & RADIAL GRATE SUPPLIED BY ICAST
 7. INVERT 1 OFFSET 6" FROM CENTER
 INVERT 2 OFFSET 3" FROM CENTER

Rim: 639.33' Rim to Invert: 5.31' Slack: 0.02" Sump: 1.3" Step Position: 253°

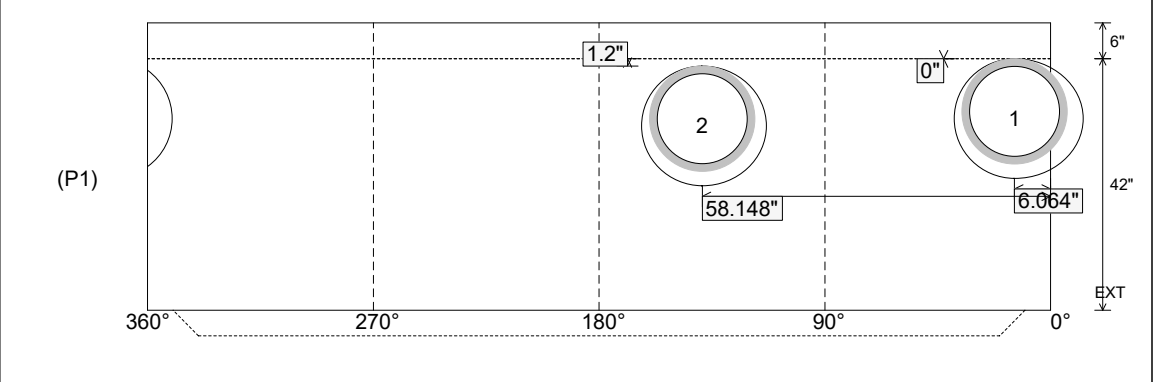
Position	Elev	Angle	Ext. (cw)	Pipe	Pipe OD	Connector	Hole	Horz Size	Up ()	Offset
Invert 1	634.02'	0°	6.044"	15" HDPE	17.6"	Hole 20	20"	21.532", 4.997"	0"	6"
Invert 2	634.12'	146°	70.892"	15" HDPE	17.6"	Hole 20	20"	20.841"	1.2"	-3"
Invert 3										
Invert 4										
Invert 5										
Invert 6										
Invert 7										
Invert 8										

RIGHT-SIDE UP VIEW (int. dimensions)

UPSIDE-DOWN VIEW (int. dimenions)



INSIDE WALL DIMENSIONS



Coating (Int): Coating (Ext):	Seam Up: Tongue Seam Dn: n/a	Wall Thickness: 5" Floor Height: 6"	Height (Int): 42" Height (Ext): 48"	Weight (Net): 3957 lb Volume (Net): 1.01cu.yd
----------------------------------	---------------------------------	--	--	--