

Job Name: 25-2991 BHS Addition & Renovation Ph 2
Job Location: Bardstown, KY
Contractor: Parker Excavating, LLC

PC: Erica Bradley
 TECH: J. Horsley - A
 Plant: 100



Structure ID: **6B**
 Spec: Storm
 Type: STM.MH
 Size: 48"

Rim: 646.8'
 Invert: 639.21'
 Rim to Invert: 7.59'

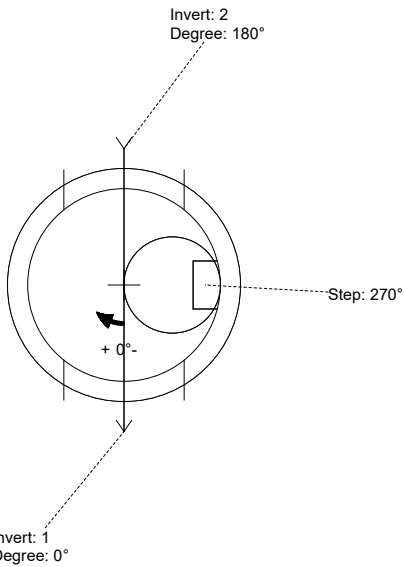
Sump: 1.9"
 Floor (Top): 639.052'
 Floor Height: 6"

Floor (Bot): 638.552'
 Overall Height: 8.083'
 Slack: 1.98"

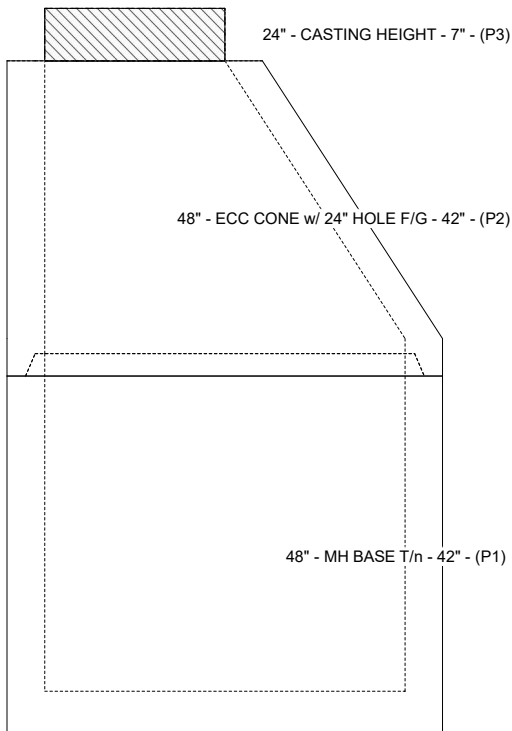
Structure Notes:
 PLAN LABEL: MH-6B
 1. PER ASTM C-478 SPECIFICATIONS
 2. CONCRETE: 4,000 PSI AT 28 DAYS
 3. REINFORCEMENT: PER ASTM A615
 4. NO STORM INVERT
 5. STEPS AT 270 DEGREES
 6. HOE MC-315 FRAME & COVER "STORM" SUPPLIED BY ICAST

STRUCTURE SUMMARY:

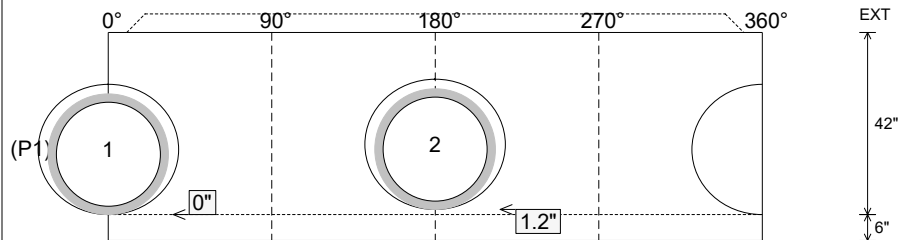
P3) 24" - CASTING HEIGHT - 7"	0 lb
P2) 48" - ECC CONE w/ 24" HOLE F/G - 42"	3200 lb
P1) 48" - MH BASE T/n - 42"	3632 lb
1) CASTING - HOE MC-315 F/C Storm	258 lb
1) 48" - Conseal CS-102 1.00"	0 lb
2) Hole - 30	0 lb
7) MH Step ML-10-TDS-NCR - 10"	0 lb
Structure Total:	7090 lb



Position	Elev	Angle	Pipe	Pipe OD	Hole	Connector	Up (L)	Ref
Rim	646.8'							
Reducer								
Invert 1	639.21'	0°	24" HDPE	27.8"	30"	Hole 30	0"	P1
Invert 2	639.31'	180°	24" HDPE	27.8"	30"	Hole 30	1.2"	P1
Invert 3								
Invert 4								
Invert 5								
Invert 6								
Invert 7								
Invert 8								



Cast (Int. Dim.) - Interior Dimensions



Submittal Drawing
 1/14/2026 9:21:13 AM

SUBMITTAL
 APPROVED BY: