

Job Name: 25-2991 BHS Addition & Renovation Ph 2
 Job Location: Bardstown, KY
 Contractor: Parker Excavating, LLC

Plant: 100
 1/14/2026 9:50:16 AM

Tech: J. Horsley - A
 PC: Erica Bradley



Structure ID: 3B

P2 MH048LD12CC

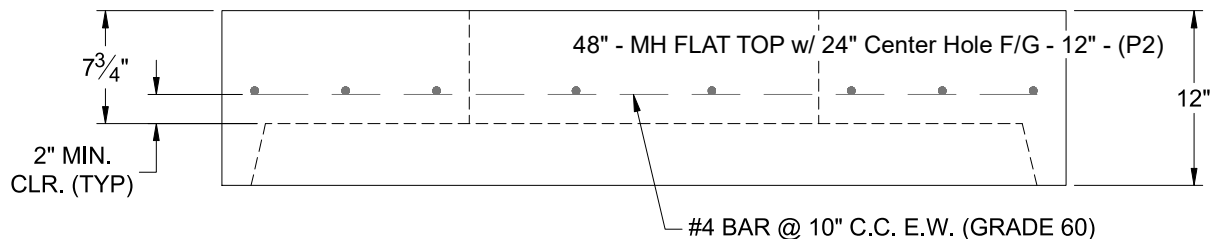
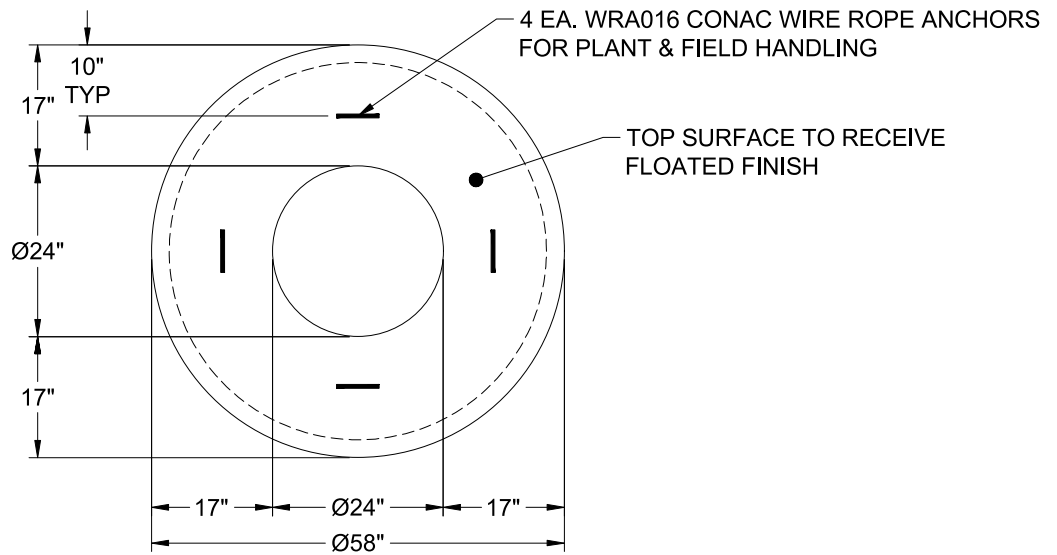
MH FLAT TOP w/ 24" Center Hole F/G

- P3) 24" - CASTING HEIGHT - 7"
- P2) 48" - MH FLAT TOP w/ 24" Center Hole F/G - 12"
- P1) 48" - MH BASE Custom Ht T/n - 34"
- 1) CASTING - HOE MCB-350-B F/G
- 1) 48" - Conseal CS-102 1.00"
- 2) Hole - 16
- 1) Hole - 6

0 lb
 1580 lb
 3514 lb
 288 lb
 0 lb
 0 lb
 0 lb

 Structure Total: 5382 lb

- Structure Notes:
1. PER ASTM C-478 SPECIFICATIONS
 2. CONCRETE: 4,000 PSI AT 28 DAYS
 3. REINFORCEMENT: PER ASTM A615
 4. NO STORM INVERT
 5. NO STEPS
 6. HOE MCB-350B FRAME & BAR GRATE SUPPLIED BY ICAST
 7. LIFTERS: 4 EA. WRA016 CONAC WIRE ROPE ANCHORS FOR PLANT & FIELD HANDLING
 8. TOP SURFACE TO RECEIVE FLOATED FINISH



Coating (Int): Coating (Ext):	Seam Up: Flat Seam Dn: Groove	Wall Thickness: 5"	Height (Ext): 12"	Weight (Net): 1580 lb Volume (Net): 0.39cu.yd
----------------------------------	----------------------------------	--------------------	-------------------	--