

Job Name: 25-2991 BHS Addition & Renovation Ph 2
Job Location: Bardstown, KY
Contractor: Parker Excavating, LLC

PC: Erica Bradley
 TECH: J. Horsley - A
 Plant: 100



Structure ID: **1D**
 Spec: MSD
 Type: Yard Drain
 Size: 24" x 24"

Rim: 640.25'
 Invert: 637.75'
 Rim to Invert: 2.5'

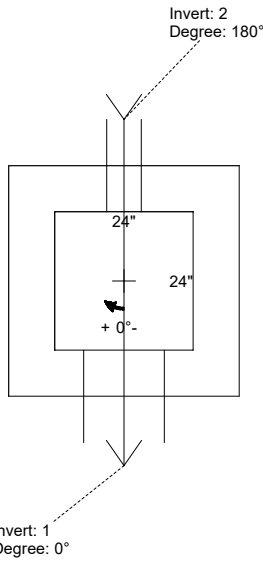
Sump: 0.7"
 Floor (Top): 637.692'
 Floor Height: 8"

Floor (Bot): 637.025'
 Overall Height: 3.167'
 Slack: 0.7"

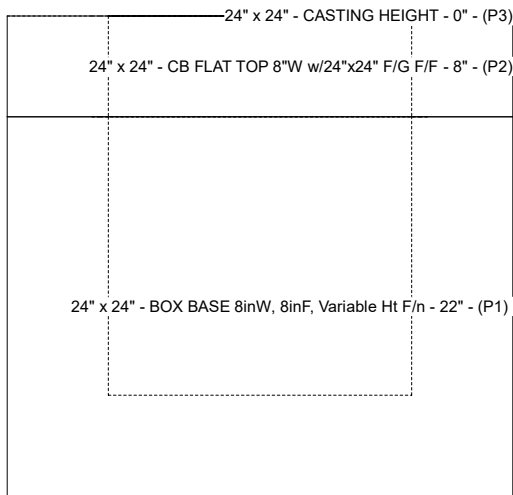
Structure Notes:
 PLAN LABEL: YD-1D
 1. PER ASTM C-913 SPECIFICATIONS
 2. CONCRETE: 4,000 PSI AT 28 DAYS
 3. REINFORCEMENT:
 - FLAT LID: #5 BAR @ 6" C.C. E.W. (GRADE 60)
 - BASE: #5 BAR @ 12" C.C. E.W. (GRADE 60)
 4. NO STORM INVERT
 5. NO STEPS
 6. IRON AGE DESIGNS OBLIO 24" X 24" HEEL PROOF CATCH BASIN GRATE & SQUARE TYPE "E" FRAME SUPPLIED BY OTHERS - FRAME TO BE CAST INTO FLAT LID

STRUCTURE SUMMARY:

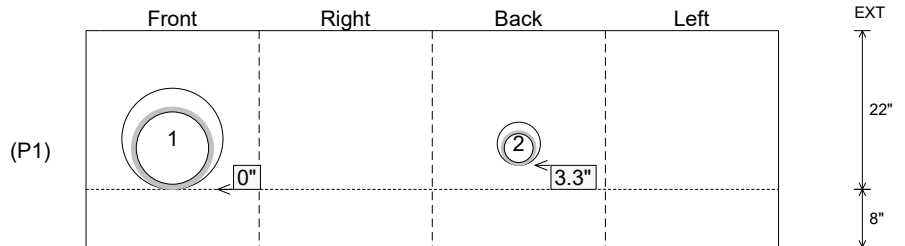
P3) 24" x 24" - CASTING HEIGHT - 0"	0 lb
P2) 24" x 24" - CB FLAT TOP 8"W w/24"x24" F/G F/F - 8"	845 lb
P1) 24" x 24" - BOX BASE 8inW, 8inF, Variable Ht F/n - 22"	2842 lb
2) 24" x 24" - Conseal CS-102 1.00"	0 lb
1) Hole - 14	0 lb
1) Hole - 6	0 lb
Structure Total:	3687 lb



Position	Elev	Angle	Pipe	Pipe OD	Hole	Connector	Up (")	Ref
Rim	640.25'							
Reducer								
Invert 1	637.75'	0°	10" HDPE	11.4"	14"	Hole 14	0"	P1
Invert 2	638'	180°	4" HDPE (perf pipe)	4.8"	6"	Hole 6	3.3"	P1
Invert 3								
Invert 4								
Invert 5								
Invert 6								
Invert 7								
Invert 8								



Cast (Int. Dim.) - Interior Dimensions

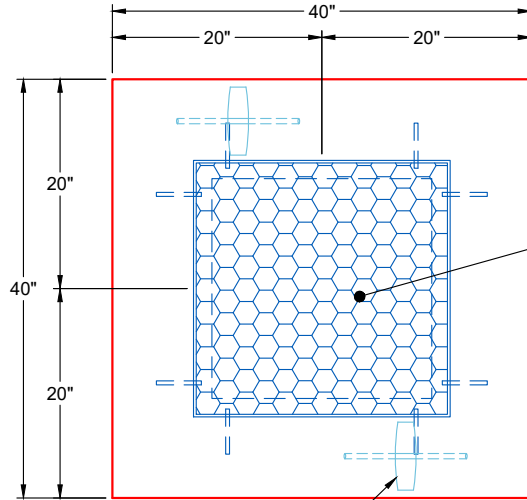


Submittal Drawing
 1/13/2026 12:21:42 PM

SUBMITTAL
 APPROVED BY:

GENERAL NOTES:

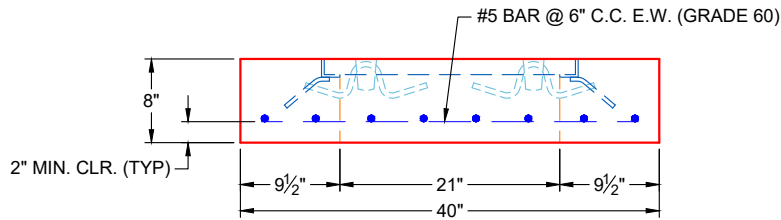
1. MANUFACTURE TO ASTM C-913 (LATEST REVISION)
2. CONCRETE: 5,000 PSI AT 28 DAYS
3. REINFORCING: #5 BAR @ 6" C.C. E.W. (GRADE 60)
4. WEIGHT: 845 LBS
5. IRON AGE DESIGNS OBLIO 24" X 24" HEEL PROOF CATCH BASIN GRATE & SQUARE TYPE "E" FRAME SUPPLIED BY OTHERS - FRAME TO BE CAST INTO FLAT LID



IRON AGE DESIGNS OBLIO 24" X 24" HEEL PROOF CATCH BASIN GRATE & SQUARE TYPE "E" FRAME SUPPLIED BY OTHERS - FRAME TO BE CAST INTO FLAT LID

2 EA. CONAC A-W ANCHORS FOR PLANT & FIELD HANDLING

**PLAN VIEW
(RIGHT SIDE UP)**



**FRONT VIEW
(RIGHT SIDE UP)**

REVISIONS			SUBMITTAL DRAWING: 40" X 40" FLAT LID SPECIAL, 8" HT.	
REV. 0	DATE:		CUSTOMER: PARKER EXCAVATING, LLC	
			PROJECT: BHS ADDITION & RENOVATION PH 2	
			STRUCTURE: 1D	
			SALES ORDER NO: 25-2991	
		CHECKED BY: B. SMITH	DRAWN BY: K. CARDWELL	
		DATE: 01/13/26	SCALE: NTS	PG. WEIR