



Structure ID: HW-4
P1 HWSFBIO18

SLOPED & FLARED BOX I/O

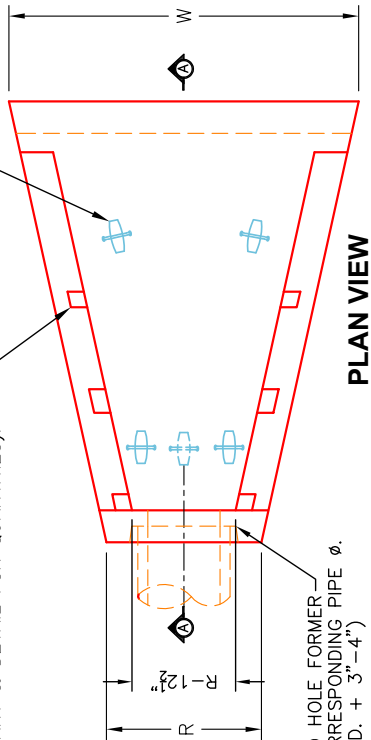
NOTES:

1. CONCRETE: KYTC APPROVED.
2. REINFORCING: #5 BAR @ 12" C/C E.W. - GRADE 60, (WITH 2" CONCRETE COVER MINIMUM)
3. REINFORCING BARS TO BE TACK WELDED OR TIED.
4. PIPE AND LIFTING ANCHOR POCKETS TO BE GROUTED WITH KYTC APPROVED NON-SHRINK GROUT.
5. DRAWING TO BE USED IN CONJUNCTION WITH KYTC STD. DRAWINGS RDB-105-06 & RDB-106-05 AND THE STANDARD SPECIFICATIONS FOR ROAD AND BRIDGE CONSTRUCTION.
6. 3/8" CHAMFER ON ALL EXPOSED EDGES.
7. PREFORMED STEPPED HOLE SIZED AS PER O.D. OF PIPE + 3"-4".

"A-ANCHOR" LIFTING SYSTEM FOR PLANT & FIELD HANDLING (SEE CHART FOR TYPE & QTY.)

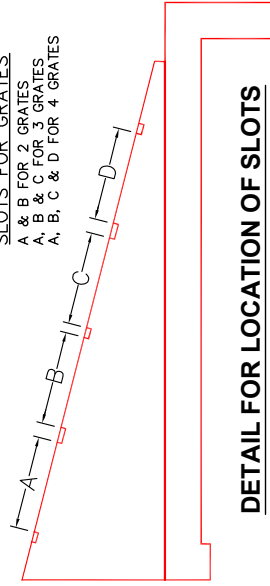
SLOTS AS REQUIRED FOR STRUCTURAL STEEL GRATES (NOT SHOWN) AS SUPPLIED BY BOTTOMS ENGINEERING OR J.R. HOE & SONS (SEE CHART & DETAIL FOR QUANTITIES).

STEPPED HOLE FORMER FOR CORRESPONDING PIPE Ø. (PIPE O.D. + 3"-4")

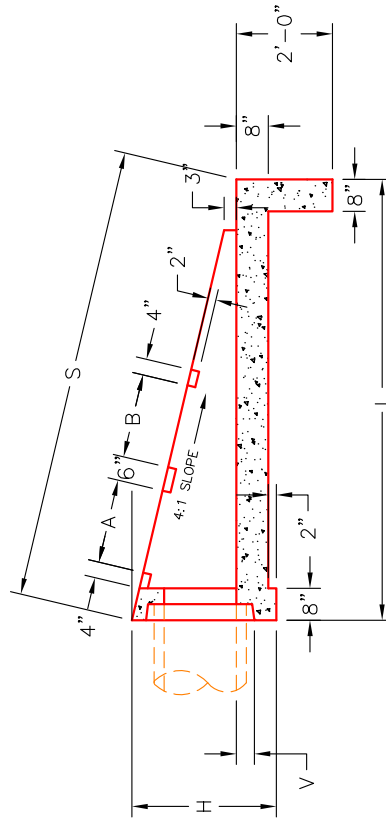


PLAN VIEW

SLOTS FOR GRATES:
 A & B FOR 2 GRATES
 A, B & C FOR 3 GRATES
 A, B, C & D FOR 4 GRATES



DETAIL FOR LOCATION OF SLOTS



SECTION A-A

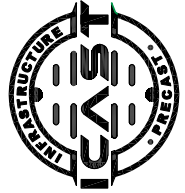
FRONT ELEVATION

APPROVED FOR DESIGN ONLY

DIMENSIONS

PIPE Ø	H	L	S	R	V	W	A	B	C	D	NO. GRATES	CONCRETE YD'	LBS. #4 BAR	LIFTING ANCHORS
15"	36"	102"	105 1/8"	35 1/2"	4"	87"	21"	21"	---	---	2 EA.	1.8	81	3 EA. CONAC 6CA18
18"	36"	102"	105 1/8"	35 1/2"	4"	87"	21"	21"	---	---	2 EA.	1.8	81	3 EA. CONAC 6CA18
24"	43"	128"	132"	42 1/2"	5"	107"	33"	33"	---	---	2 EA.	2.7	111	4 EA. CONAC 6CA18
30"	50"	154"	158 3/4"	49 1/2"	6"	127"	33"	33"	21"	---	1 EA.	3.8	146	4 EA. CONAC 6CA18
36"	57"	180"	185 1/2"	56 1/2"	6"	147"	33"	33"	21"	21"	2 EA.	5.1	187	4 EA. CONAC 6CA18

DIVISION OF CONSTRUCTION



INFRASTRUCTURE PRECAST, INC.
 981 WEST 7TH ST., BEAVER DAM, KY, 42320
 PHONE: (270) 363-2236, FAX: (270) 298-7424

KYTC 15"-36" SLOPED & FLARED BOX INLET - OUTLET HEADWALL (NO SKEW)

DRAWING NO.: KYTC 12"-36" SF-10 DATE: 12-08-21
 REVIEWED BY: J.H. ROSS, PE DRAWN BY: N. RICHARDS
 WEB: WWW.CASTING.COM SCALE: NTS