



Structure ID: HW-1

P1 HWSFBIO18

SLOPED & FLARED BOX I/O

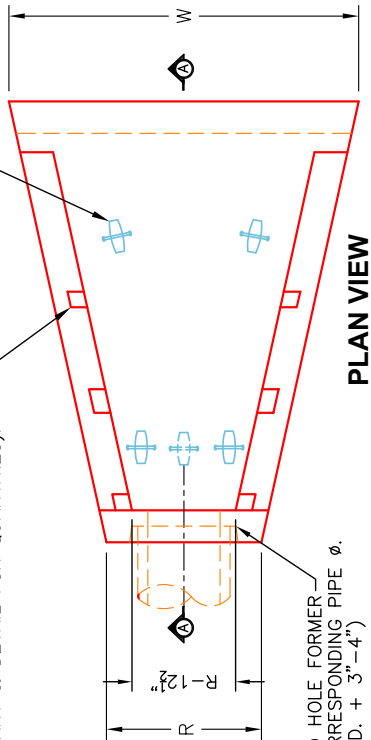
NOTES:

1. CONCRETE: KYTC APPROVED.
2. REINFORCING: #5 BAR @ 12" C/C E.W. - GRADE 60, (WITH 2" CONCRETE COVER MINIMUM)
3. REINFORCING BARS TO BE TACK WELDED OR TIED.
4. PIPE AND LIFTING ANCHOR POCKETS TO BE GROUTED WITH KYTC APPROVED NON-SHRINK GROUT.
5. DRAWING TO BE USED IN CONJUNCTION WITH KYTC STD. DRAWINGS RDB-105-06 & RDB-106-05 AND THE STANDARD SPECIFICATIONS FOR ROAD AND BRIDGE CONSTRUCTION.
6. 3/8" CHAMFER ON ALL EXPOSED EDGES.
7. PREFORMED STEPPED HOLE SIZED AS PER O.D. OF PIPE + 3"-4".

"A-ANCHOR" LIFTING SYSTEM FOR PLANT & FIELD HANDLING (SEE CHART FOR TYPE & QTY.)

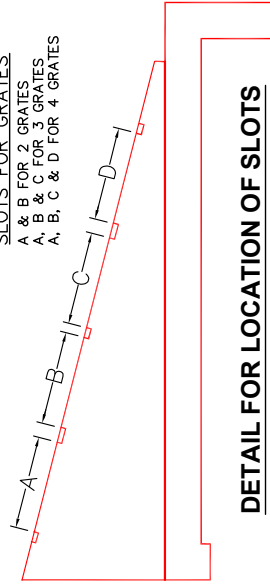
SLOTS AS REQUIRED FOR STRUCTURAL STEEL GRATES (NOT SHOWN) AS SUPPLIED BY BOTTOMS ENGINEERING OR J.R. HOE & SONS (SEE CHART & DETAIL FOR QUANTITIES).

STEPPED HOLE FORMER FOR CORRESPONDING PIPE Ø. (PIPE O.D. + 3"-4")

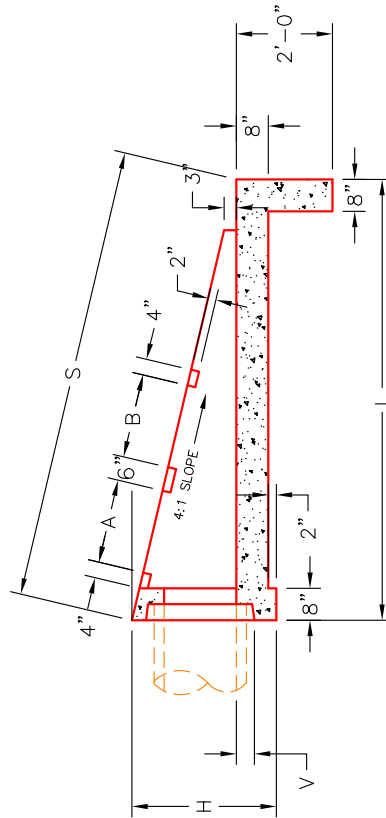


PLAN VIEW

SLOTS FOR GRATES:
 A & B FOR 2 GRATES
 A, B & C FOR 3 GRATES
 A, B, C & D FOR 4 GRATES



DETAIL FOR LOCATION OF SLOTS



SECTION A-A

FRONT ELEVATION

APPROVED FOR DESIGN ONLY

DIMENSIONS

| PIPE Ø | H | L | S | R | V | W | A | B | C | D | NO. GRATES | CONCRETE YD' | LBS. #4 BAR | LIFTING ANCHORS |
|--------|-----|------|----------|---------|----|------|-----|-----|-----|-----|------------|--------------|-------------|-------------------|
| 15" | 36" | 102" | 105 1/8" | 35 1/2" | 4" | 87" | 21" | 21" | --- | --- | 2 EA. | 1.8 | 81 | 3 EA. CONAC 6CA18 |
| 18" | 36" | 102" | 105 1/8" | 35 1/2" | 4" | 87" | 21" | 21" | --- | --- | 2 EA. | 1.8 | 81 | 3 EA. CONAC 6CA18 |
| 24" | 43" | 128" | 132" | 42 1/2" | 5" | 107" | 33" | 33" | --- | --- | 2 EA. | 2.7 | 111 | 4 EA. CONAC 6CA18 |
| 30" | 50" | 154" | 158 3/4" | 49 1/2" | 6" | 127" | 33" | 33" | 21" | --- | 1 EA. | 3.8 | 146 | 4 EA. CONAC 6CA18 |
| 36" | 57" | 180" | 185 1/2" | 56 1/2" | 6" | 147" | 33" | 33" | 21" | 21" | 2 EA. | 5.1 | 187 | 4 EA. CONAC 6CA18 |

DIVISION OF CONSTRUCTION



INFRASTRUCTURE PRECAST, INC.
 981 WEST 7TH ST., BEAVER DAM, KY, 42320
 PHONE: (270) 363-2236, FAX: (270) 298-7424

KYTC 15"-36" SLOPED & FLARED BOX INLET - OUTLET HEADWALL (NO SKEW)

DRAWING NO.: KYTC 12"-36" SF-10 DATE: 12-08-21
 REVIEWED BY: J.H. ROSS, PE DRAWN BY: N. RICHARDS
 WEB: WWW.CASTING.COM SCALE: NTS