

**Job Name: 25-2952 - KYTC Jefferson Co Call 106 (251315)**  
**Job Location: Indiana, KY**  
**Contractor: Louisville Paving and Construction**

PC: Jay Ross Jarvis  
 TECH: J. Horsley - A  
 Plant: 100



Structure ID: 83  
 Spec: KYTC  
 Type: DBI TYPE 13G  
 Size: 15" x 27"

Rim: 551.05'  
 Invert: 548.72'  
 Rim to Invert: 2.33'

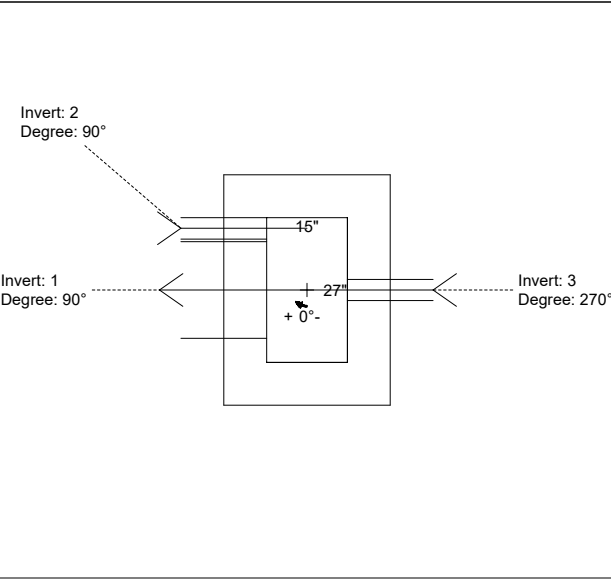
Sump: 0"  
 Floor (Top): 548.72'  
 Floor Height: 8"

Floor (Bot): 548.053'  
 Overall Height: 3'  
 Slack: -0.04"

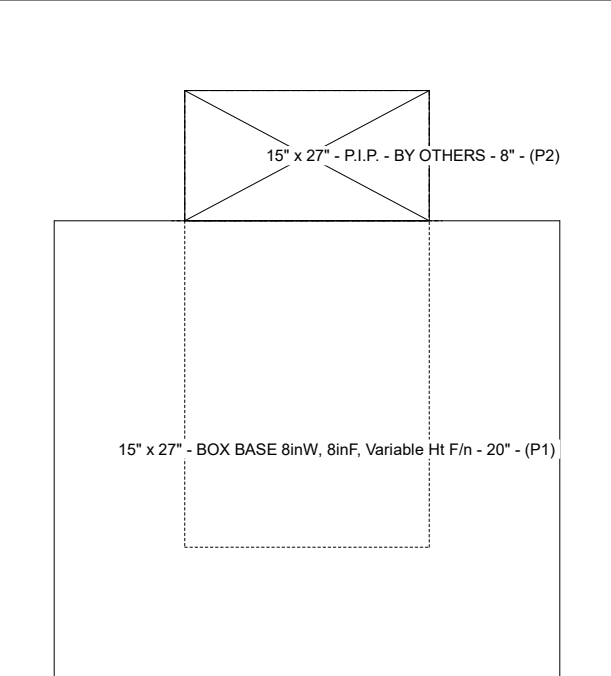
**Structure Notes:**  
**\*\*KYTC STATE PROJECT\*\***  
 1. PER KYTC DBI TYPE 13G / ASTM C-913 SPECS  
 2. CONCRETE: 4,000 PSI AT 28 DAYS  
 3. REINFORCEMENT: #5 BAR @ 12" C.C. E.W. (GRADE 60)  
 4. NO STORM INVERT  
 5. NO STEPS  
 6. JBS 3413 FRAME & GRATE SUPPLIED BY OTHERS  
 7. STUB #5 BARS SPACED @ 12" C.C. (GRADE 60) 12" OUT TOP OF WALLS FOR FIELD POUR TIE-IN

**STRUCTURE SUMMARY:**

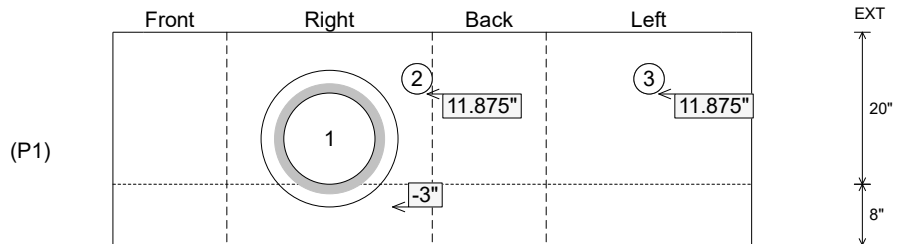
P2) 15" x 27" - P.I.P. - BY OTHERS - 8" 0 lb  
 P1) 15" x 27" - BOX BASE 8inW, 8inF, Variable Ht F/n - 20" 2267 lb  
 1) SECONDARY POUR 0 lb  
 1) 15" x 27" - Conseal CS-102 1.00" 0 lb  
 1) Hole - 18 0 lb  
 2) Hole - 4 0 lb  
 Structure Total: 2267 lb



Position	Elev	Angle	Pipe	Pipe OD	Hole	Connector	Up (L)	Ref
Rim	551.05'							
Reducer								
Invert 1	548.72'	90°	12" HDPE	14.5"	18"	Hole 18	-3"	P1
Invert 2	549.71'	90°	4" Hole	4"	4"	Hole 4	11.875"	P1
Invert 3	549.71'	270°	4" Hole	4"	4"	Hole 4	11.875"	P1
Invert 4								
Invert 5								
Invert 6								
Invert 7								
Invert 8								



**Cast (Int. Dim.) - Interior Dimensions**



Submittal Drawing  
 3/5/2026 10:32:09 AM

SUBMITTAL  
 APPROVED BY: