

Job Name: 25-2944 SR660 Pump Station  
 Job Location: Taylorsville, KY  
 Contractor: Green Mechanical Construction, Inc.

Plant: 100

Tech: J. Horsley

12/15/2025 3:51:13 PM

PC: C. Goff



**Structure ID: 1000gal. HOLDING TANK**

**P2 BX60120-08LD06**

**CB FLAT TOP 6"W w/24"Hole CTR F/F**

- P3) 24" - CASTING HEIGHT - 7"
- P2) 60" x 120" - CB FLAT TOP 6"W w/24"Hole CTR F/F - 8"
- P1) 60" x 120" - BOX BASE 6inW, 6inF, Variable Ht F/n - 54"
- 1) CASTING - HOE MC-315 F/C Sanitary
- 1) 60" x 120" - Conseal CS-102 1.00"
- 1) PSX - 8QRS DD

0 lb  
 6076 lb  
 15200 lb  
 258 lb  
 0 lb  
 6 lb

Structure Total: 21540 lb

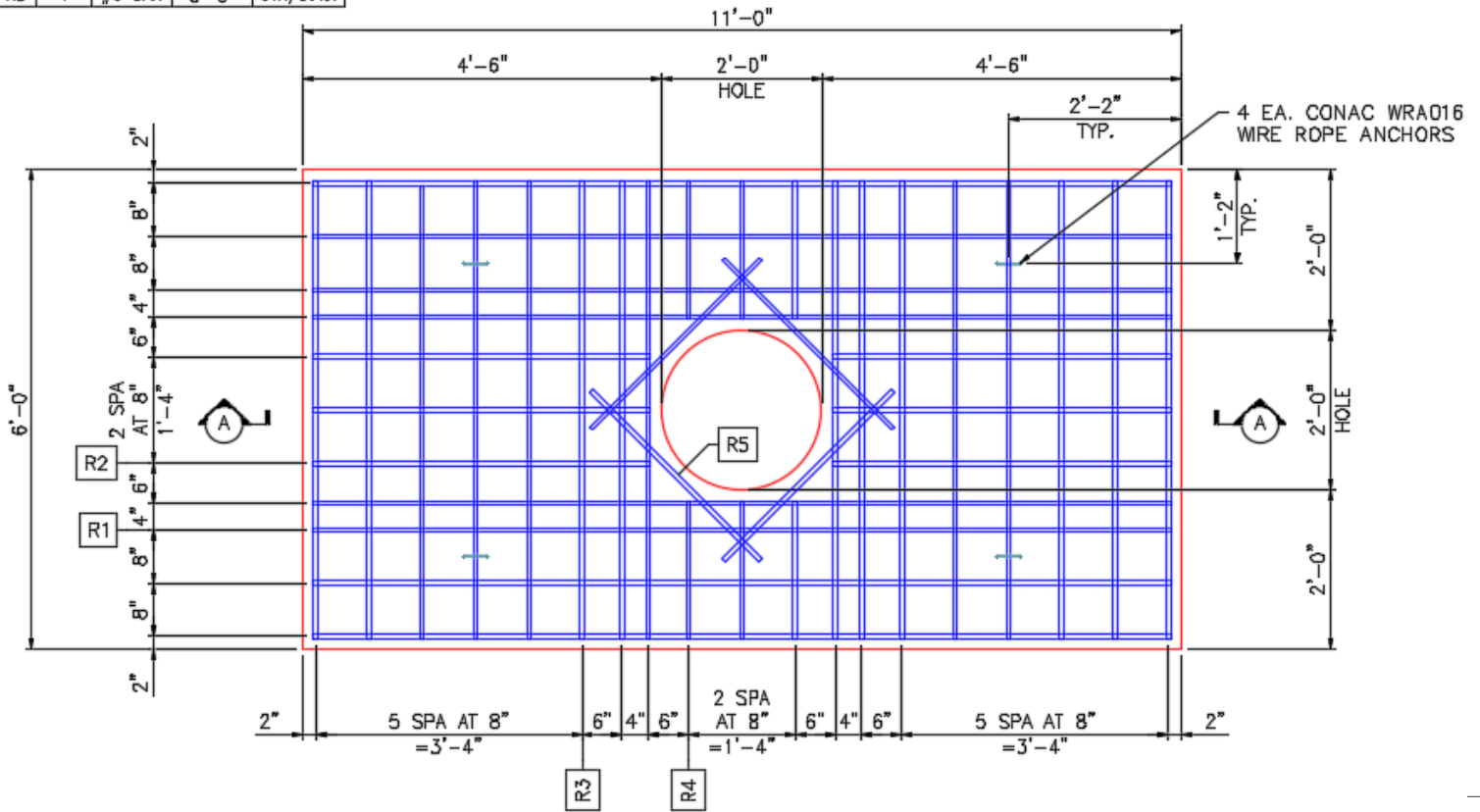
Structure Notes:

1. PER ASTM C890/C913 SPECIFICATIONS.
2. CONCRETE = 4,500 PSI AT 28 DAYS.
3. NO STEPS & NO INVERT CHANNEL.
4. CASTING BY ICAST (HOE MC-315 F/C)

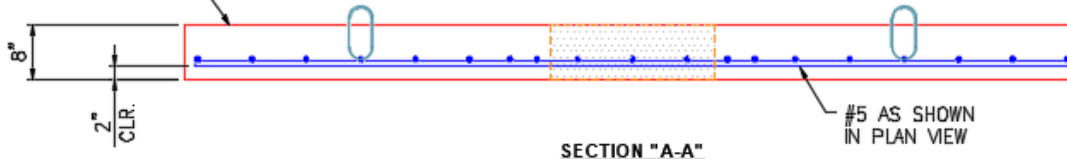
REINFORCING PER ASTM A615 (GRADE 60).

- TOP SLAB = H20 LOADING..
- WALLS (As .47) #5 BARS AT 8" C.C.E.W.
- FLOOR (As .47) #5 BARS AT 8" C.C.E.W.

REINFORCEMENT CUT LIST				
BAR	QTY	MATERIAL	LENGTH	SHAPE
R1	8	#5 BAR	10'-8"	STR
R2	6	#5 BAR	4'-2"	STR
R3	16	#5 BAR	5'-8"	STR
R4	6	#5 BAR	1'-8"	STR
R5	4	#5 BAR	3'-0"	STR/DIAG.



FLOATED FINISH ON TOP SURFACE



Coating (Int):  
 Coating (Ext):

Seam Up: Flat  
 Seam Dn: Flat

Wall Thickness: 6"

Height (Ext): 8"

Weight (Net): 6076 lb  
 Volume (Net): 1.55cu.yd