

Job Name: 25-2943 Shelby Green Ph.2 Sec.3 Job Location: Junction City, KY Contractor: H&S,LLC	Plant: 100 12/11/2025 1:20:12 PM	Tech: J. Horsley - A PC: Celina Goff	
---	-------------------------------------	---	--

Structure ID: OCS-B7

P1 BX2424-08BAVF

BOX BASE 8inW, 8inF, Variable Ht F/n

P3) 18" x 18" - CASTING HEIGHT - 0"	0 lb
P2) 24" x 24" - CB FLAT TOP 8"W w/18"x18" F/G F/F - 8"	857 lb
P1) 24" x 24" - BOX BASE 8inW, 8inF, Variable Ht F/n - 26"	3139 lb
1) CASTING - HOE 165A F/G	138 lb
1) 24" x 24" - Conseal CS-102 1.00"	0 lb
1) 18" x 18" - Conseal CS-102 1.00"	0 lb
1) Hole - 16	0 lb
1) Hole - 8	0 lb
Structure Total:	4134 lb

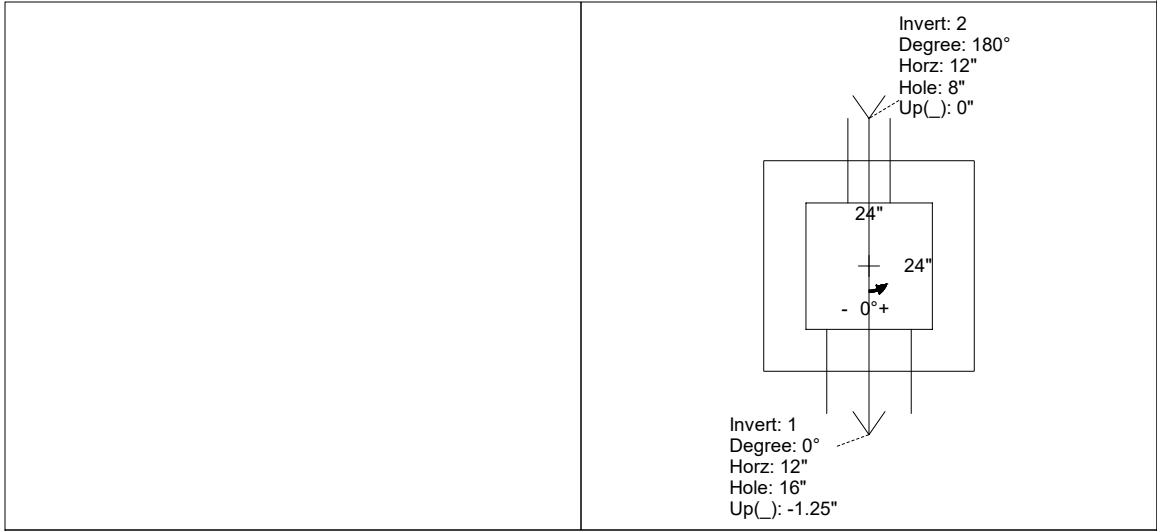
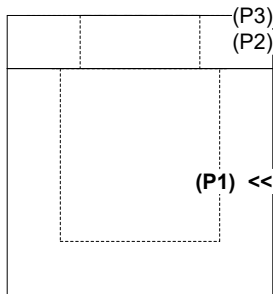
Structure Notes:
 1. PER ASTM C-913 SPECIFICATIONS
 2. CONCRETE: 4,000 PSI AT 28 DAYS
 3. REINFORCEMENT: #5 BAR @ 12" C.C. E.W. (GRADE 60) - 2" MIN. REBAR CLEARANCE (TYP)
 4. HOE 165-A FRAME & GRATE SUPPLIED BY ICAST FRAME TO BE CAST INTO FLAT LID FLANGE SIDE UP

Rim: 1000.7' Rim to Invert: 2.87' Slack: 0.44" Sump: 0" Step Position:

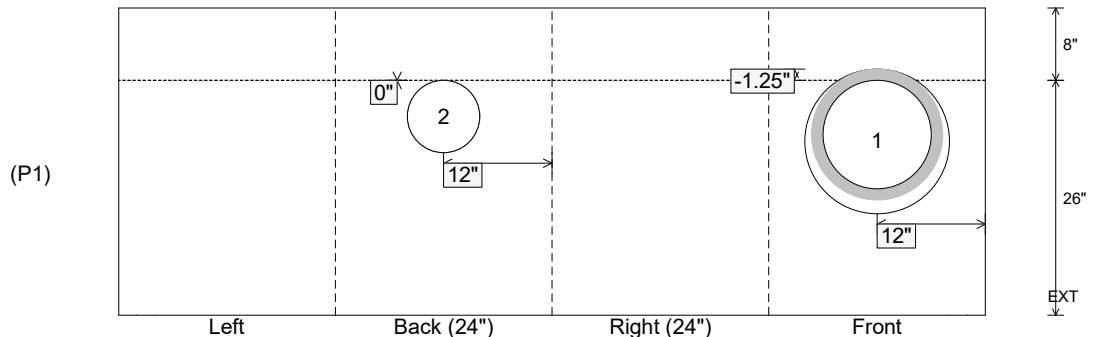
Position	Elev	Angle	Ext. (cw)	Pipe	Pipe OD	Connector	Hole	Horz Size	Up ()	Offset
Invert 1	997.83'	0°	20"	12" HDPE	14.5"	Hole 16	16"	16"	-1.25"	0"
Invert 2	997.83'	180°	20"	8" Orifice	8"	Hole 8	8"	8"	0"	0"
Invert 3										
Invert 4										
Invert 5										
Invert 6										
Invert 7										
Invert 8										

RIGHT-SIDE UP VIEW (int. dimensions)

UPSIDE-DOWN VIEW (int. dimensions)



INSIDE WALL DIMENSIONS



Coating (Int): Coating (Ext):	Seam Up: Flat Seam Dn: n/a	Wall Thickness: 8" Floor Height: 8"	Height (Int): 26" Height (Ext): 34"	Weight (Net): 3139 lb Volume (Net): 0.8cu.yd
----------------------------------	-------------------------------	--	--	---