

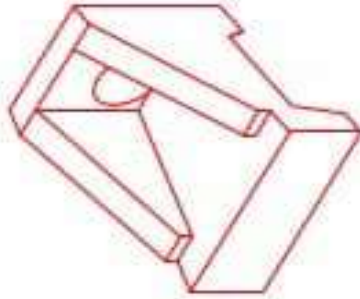


**Structure ID: HW-A1**

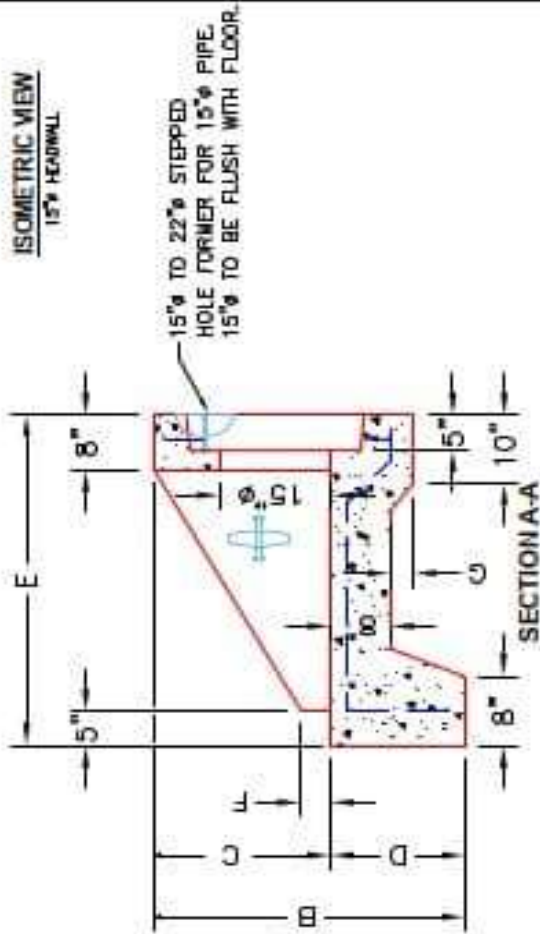
**P1 HWSF15**

**15" - SLOPED & FLARED HEADWALL F/F**

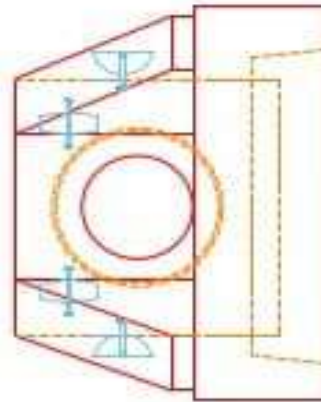
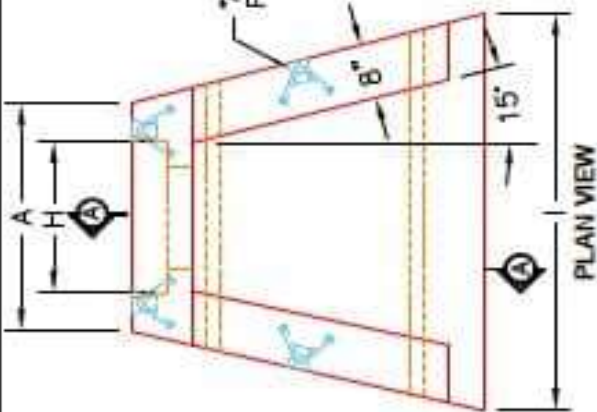
DIMENSIONS										
PPE #	A	B	C	D	E	F	G	H	I	WEIGHT
15"	2'-8"	2'-8"	2'-0"	1'-8"	4'-0"	3"	2'	2'-0"	4'-8"	3,161 LBS.



ISOMETRIC VIEW  
15" HEADWALL



\*A-ANCHOR\* LIFTING SYSTEM FOR PLANT & FIELD HANDLING.



**NOTES:**

1. CONCRETE: 4500 PSI @ 28 DAYS.
2. REINFORCING: #4 BAR @ 12" C/C E-W - GRADE @ 0, (WITH 2" CONCRETE COVER MINIMUM)
3. REINFORCING BARS TO BE TACK WELDED OR TIED.
4. DRAWING TO BE USED IN CONJUNCTION WITH KYTC STD. DRAWING RDH-020-03 AND THE STANDARD SPECIFICATIONS FOR ROAD AND BRIDGE CONSTRUCTION.
5. CHAMFER ON ALL EXPOSED EDGES.

**PRODUCTION WORK ORDER**

- QUALITY CONTROL CHECKLIST
- ALL DIMENSIONS CORRECT.
  - LIFTERS INSTALLED.
  - STEPPED HF CORRECT SIZE.
  - REINFORCING CORRECT.
  - DISPENSER BLOCK INSTALLED.
  - EDGES CHAMFERED.
  - ALL PATCHWORK ACCEPTABLE.



DESCRIPTION: KYTC 15" SLOPED & FLARED HEADWALL	PRODUCT I.D.: HWSF15
CUSTOMER: STOCK	PRODUCT VIEW: RIGHT SIDE UP
PROJECT: STOCK INVENTORY	PLANT: BEAVER DAM, KY.
STRUCTURE I.D.: N/A	WEIGHT: 3,161 LBS.
QUOTE/SALES ORDER NO.: N/A	TOP SECTION JOINT: N/A
CHECK: J.H. ROSS, PE	BASE SECTION JOINT: N/A
DRAWING: N. RICHARDS	QC CHECK INITIALS:
DATE: 09/15/22	SCALE: NTS
PG. 1 of 1	