

**Job Name: 25-2943 Shelby Green Ph.2 Sec.3**  
**Job Location: Junction City, KY**  
**Contractor: H&S,LLC**

PC: Celina Goff  
 TECH: J. Horsley - A  
 Plant: 100



Structure ID: **CI-C1**  
 Spec: Storm  
 Type: BX 8inW, 8inF  
 Size: 24" x 24"

Rim: 998.7'  
 Invert: 996.7'  
 Rim to Invert: 2'

Sump: 0"  
 Floor (Top): 996.7'  
 Floor Height: 8"

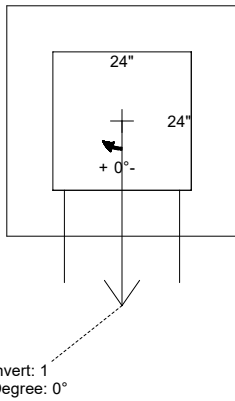
Floor (Bot): 996.033'  
 Overall Height: 2.667'  
 Slack: 0"

**Structure Notes:**

- PER ASTM C-913 SPECIFICATIONS
- CONCRETE: 4,000 PSI AT 28 DAYS
- REINFORCEMENT: #5 BAR @ 12" C.C. E.W. (GRADE 60)
- HOE KY-465 FRAME, GRATE, & CURB HOOD SUPPLIED BY ICAST

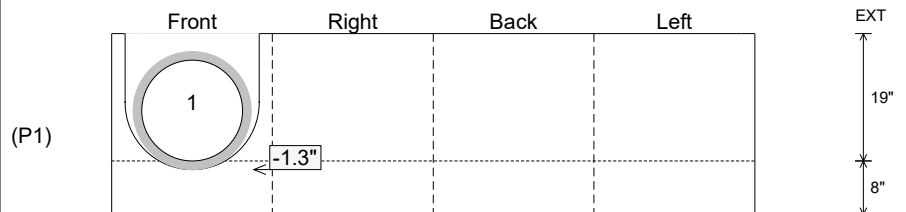
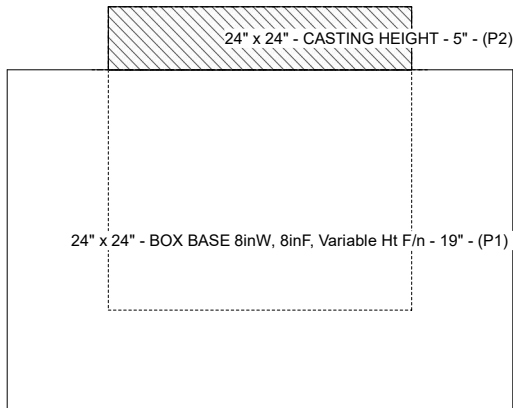
**STRUCTURE SUMMARY:**

P2) 24" x 24" - CASTING HEIGHT - 5" 0 lb  
 P1) 24" x 24" - BOX BASE 8inW, 8inF, Variable Ht F/n - 19" 2463 lb  
 1) CASTING - HOE KY-465 SET (CBI TY F) 465 lb  
 1) 24" x 24" - Conseal CS-102 1.00" 0 lb  
 1) DOGHOUSE INVRTD - 20"x20" 0 lb  
 \_\_\_\_\_  
 Structure Total: 2928 lb



Position	Elev	Angle	Pipe	Pipe OD	Hole	Connector	Up ( )	Ref
Rim	998.7'							
Reducer								
Invert 1	996.7'	0°	15" HDPE	17.6"	20" x 20"	DOGHOUSE INVRTD 20"x20"	-1.3"	P1
Invert 2								
Invert 3								
Invert 4								
Invert 5								
Invert 6								
Invert 7								
Invert 8								

**Cast (Int. Dim.) - Interior Dimensions**



Submittal Drawing  
 12/11/2025 12:34:16 PM

SUBMITTAL  
 APPROVED BY: