

Job Name: 25-2943 Shelby Green Ph.2 Sec.3
 Job Location: Junction City, KY
 Contractor: H&S,LLC

Plant: 100

Tech: J. Horsley - A

12/11/2025 1:20:54 PM

PC: Celina Goff



Structure ID: CI-B3

P2 MH048LD06SP

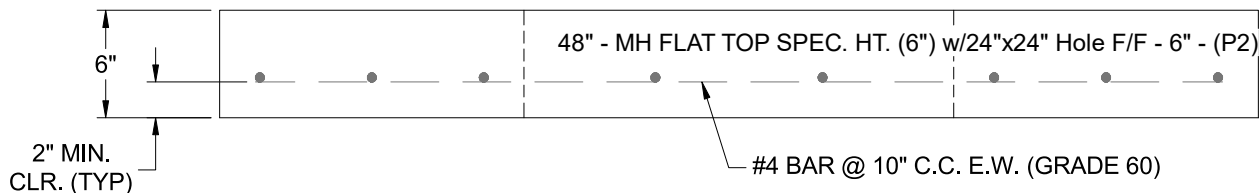
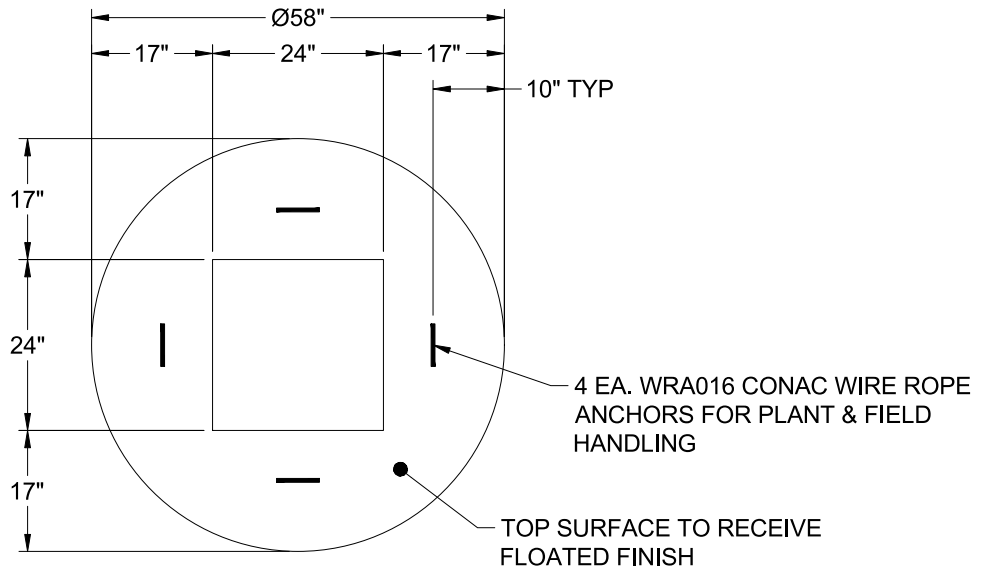
MH FLAT TOP SPEC. HT. (6") w/24"x24" Hole F/F

- P3) 24" x 24" - CASTING HEIGHT - 5"
- P2) 48" - MH FLAT TOP SPEC. HT. (6") w/24"x24" Hole F/F - 6"
- P1) 48" - MH BASE Custom Ht F/n - 34"
- 1) CASTING - HOE KY-465 SET (CBI TY F)
- 1) 48" - Conseal CS-102 1.00"
- 1) 24" x 24" - Conseal CS-102 1.00"
- 1) Hole - 30
- 1) Hole - 24

0 lb
 1040 lb
 3090 lb
 465 lb
 0 lb
 0 lb
 0 lb
 0 lb

 Structure Total: 4595 lb

- Structure Notes:
1. PER ASTM C-478 SPECIFICATIONS
 2. CONCRETE: 4,000 PSI AT 28 DAYS
 3. REINFORCEMENT: #4 BAR @ 10" C.C. E.W. (GRADE 60) - 2" MIN. REBAR CLEARANCE (TYP)
 4. NO STEPS
 5. HOE KY-465 FRAME, GRATE, & CURB HOOD SUPPLIED BY ICAST
 6. LIFTERS: 4 EA. WRA016 CONAC WIRE ROPE ANCHORS FOR PLANT & FIELD HANDLING



Coating (Int): Coating (Ext):	Seam Up: Flat Seam Dn: Flat	Wall Thickness: 5"	Height (Ext): 6"	Weight (Net): 1040 lb Volume (Net): 0.27cu.yd
----------------------------------	--------------------------------	--------------------	------------------	--