

Structure ID: CB8

P1 BX2436-08BVF

BOX BASE 8inW, 8inF, Variable Ht F/n

P2) 24" x 36" - CASTING HEIGHT - 6" P1) 24" x 36" - BOX BASE 8inW, 8inF, Variable Ht F/n - 20" 1) 24" x 36" - SGL 1"x14.5' Butyl 2) Hole - 16 1) Hole - 12	0 lb 3054 lb 0 lb 0 lb 0 lb ----- Structure Total: 3054 lb
--	--

Structure Notes:

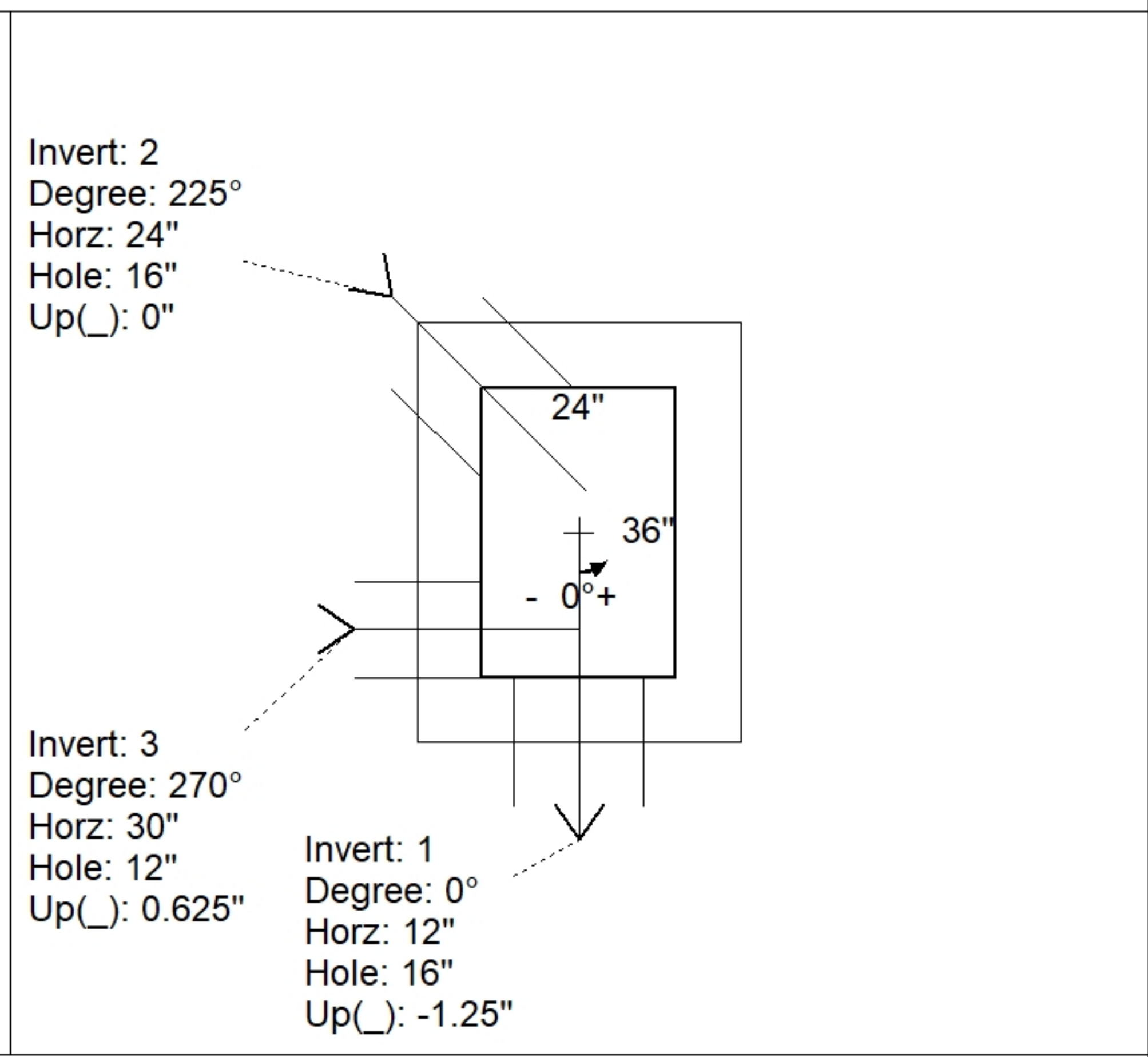
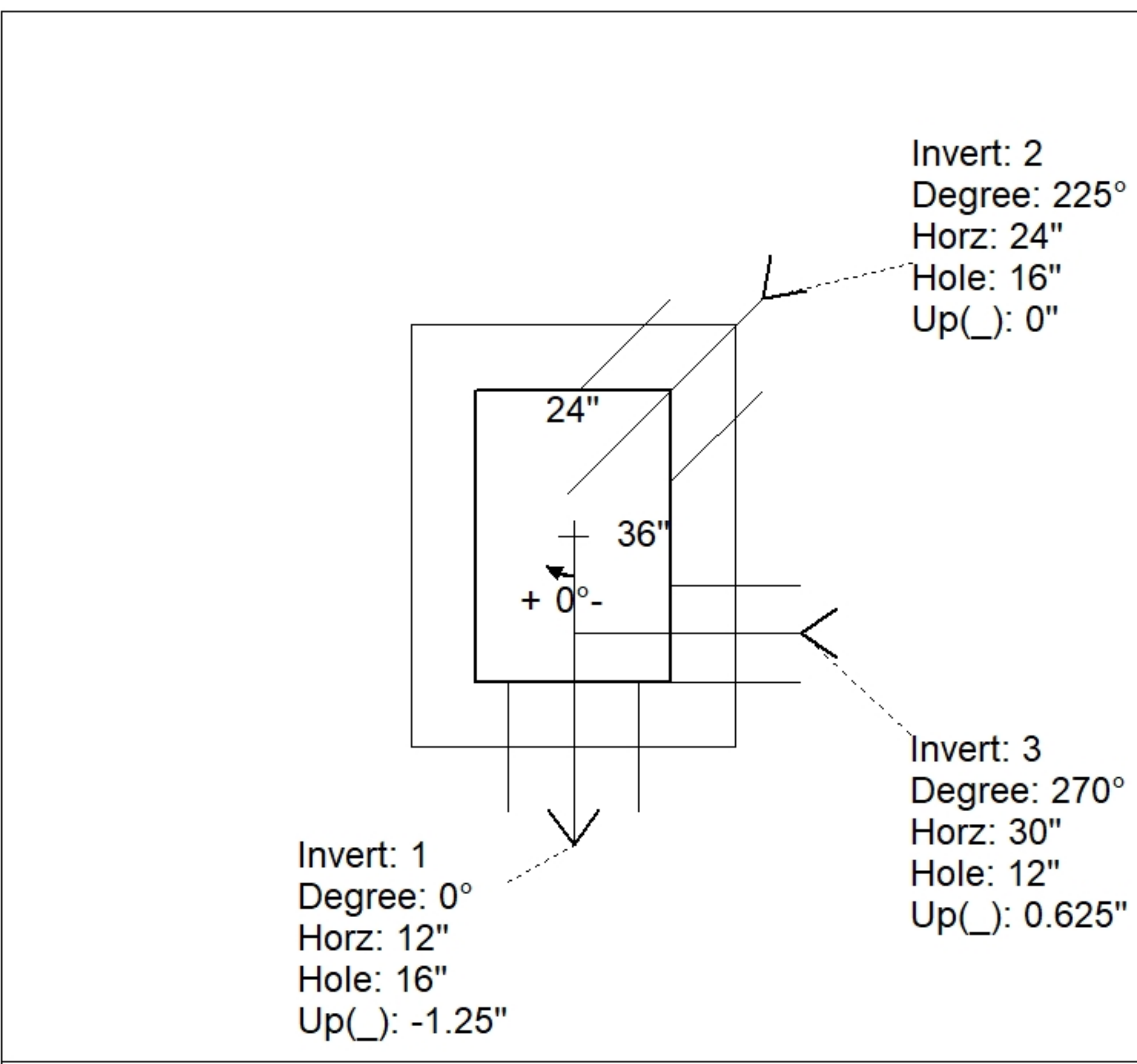
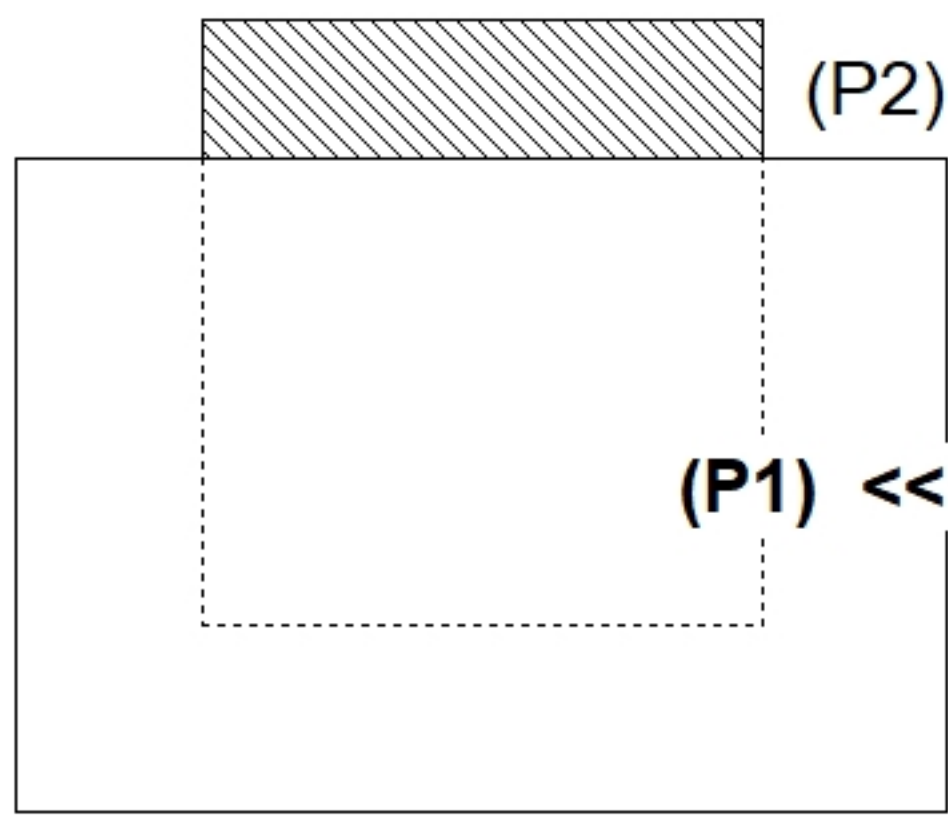
1. JR HOE HOE-525-LV PROVIDED BY ICAST.
2. PER ASTM C913 SPECIFICATIONS.
3. CONCRETE = 4,000 PSI AT 28 DAYS.
4. REINFORCING PER ASTM A615 (GRADE 60).
 - WALLS (As .12) #5 BARS AT 12" C.C.E.W.
 - FLOOR (As .12) #5 BARS AT 12" C.C.E.W.
5. VERIFY THE ELEVATION OF THE 8" HDPE PIPE.

Rim: 357.5' Rim to Invert: 2.2' Slack: 0.4" Sump: 0" Step Position:

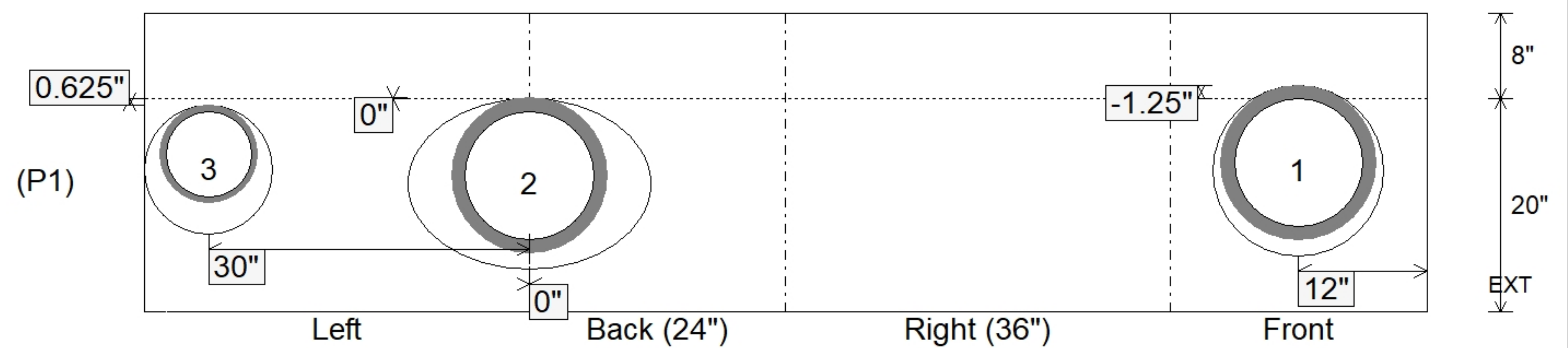
Position	Elev	Angle	Ext. (cw)	Pipe	Pipe OD	Connector	Hole	Horz Size	Up ()	Offset
Invert 1	355.3'	0°	20"	12" HDPE	14.5"	Hole 16	16"	16"	-1.25"	0"
Invert 2	355.4'	225°	40"	12" HDPE	14.5"	Hole 16	16"	11.324", 11.303"	0"	-4.25"
Invert 3	355.4'	270°	38"	8" HDPE	9.1"	Hole 12	12"	12"	0.625"	12"
Invert 4										
Invert 5										
Invert 6										
Invert 7										
Invert 8										

RIGHT-SIDE UP VIEW (int. dimensions)

UPSIDE-DOWN VIEW (int. dimensions)



INSIDE WALL DIMENSIONS



Coating (Int): Coating (Ext):	Seam Up: Flat Seam Dn: n/a	Wall Thickness: 8" Floor Height: 8"	Height (Int): 20" Height (Ext): 28"	Weight (Net): 3054 lb Volume (Net): 0.78cu.yd
----------------------------------	-------------------------------	--	--	--