

Structure ID: DI-3C

P1 BX2424-08BAVF

BOX BASE 8inW, 8inF, Variable Ht F/n

P2) 24" x 24" - CASTING HEIGHT - 4" P1) 24" x 24" - BOX BASE 8inW, 8inF, Variable Ht F/n - 29" 1) CASTING - HOE 280T F/G 1) 24" x 24" - SGL 1"x14.5' Butyl 1) Hole - 14 1) Hole - 6	0 lb 3433 lb 182 lb 0 lb 0 lb 0 lb ----- Structure Total: 3615 lb
--	--

Structure Notes:

1. PER ASTM C913 SPECIFICATIONS.
2. CONCRETE = 4,000 PSI AT 28 DAYS.
3. NO INVERT CHANNEL.
4. HOE 280T PROVIDED BY ICAST.

REINFORCING PER ASTM A615 (GRADE 60).

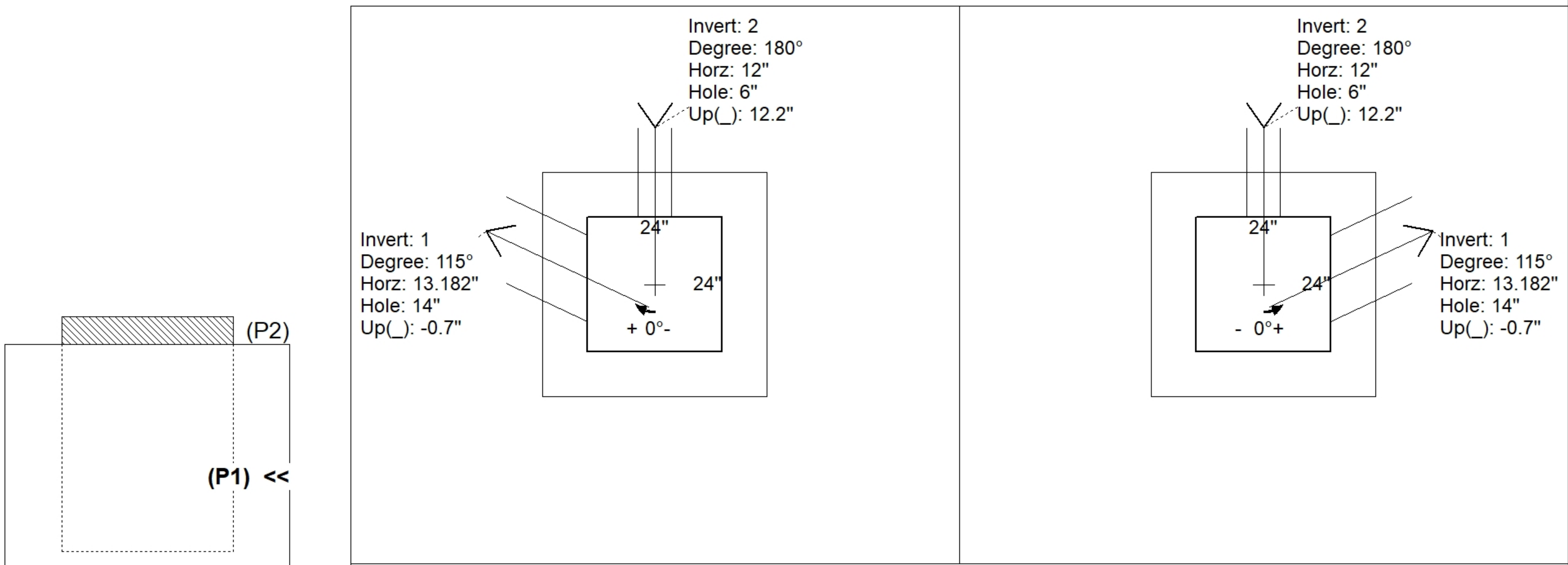
- WALLS (As .12) #5 BARS AT 12" C.C.E.W.
- FLOOR (As .12) #5 BARS AT 12" C.C.E.W.

Rim: 700.55' Rim to Invert: 2.75' Slack: 0" Sump: 0" Step Position: 270°

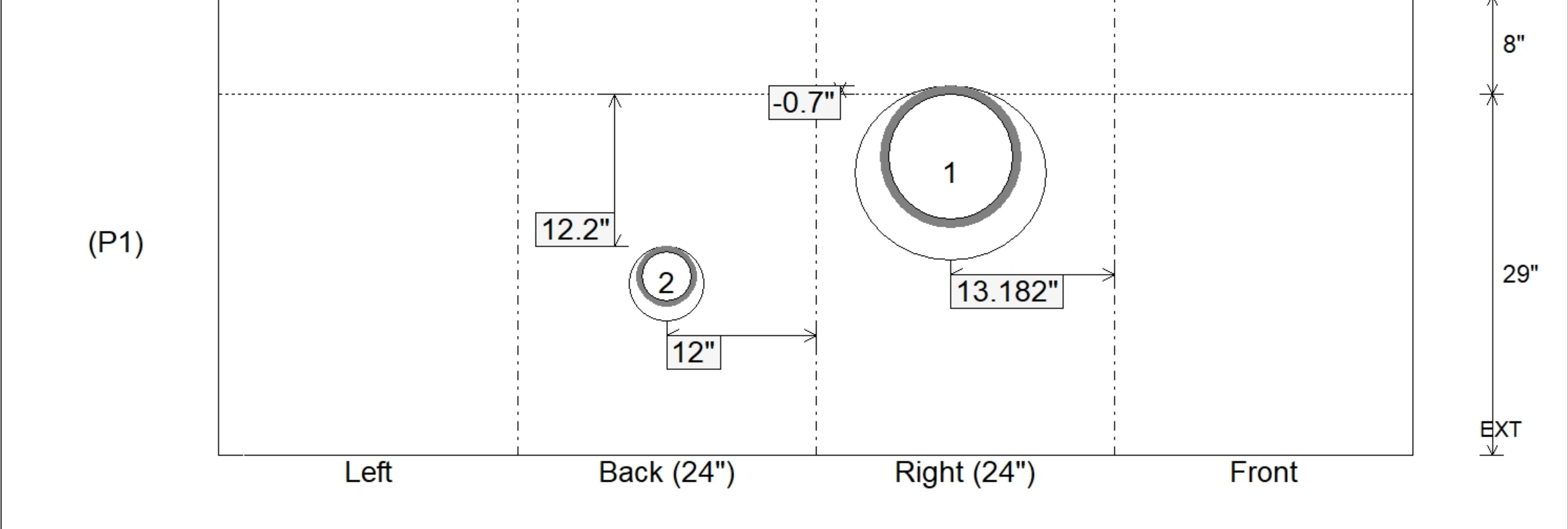
Position	Elev	Angle	Ext. (cw)	Pipe	Pipe OD	Connector	Hole	Horz Size	Up ()	Offset
Invert 1	697.8'	115°	24.913"	10" HDPE	11.4"	Hole 14	14"	15.447"	-0.7"	-4"
Invert 2	698.85'	180°	20"	4" HDPE (perf pipe)	4.8"	Hole 6	6"	6"	12.2"	0"
Invert 3										
Invert 4										
Invert 5										
Invert 6										
Invert 7										
Invert 8										

RIGHT-SIDE UP VIEW (int. dimensions)

UPSIDE-DOWN VIEW (int. dimensions)



INSIDE WALL DIMENSIONS



Coating (Int): Coating (Ext):	Seam Up: Flat Seam Dn: n/a	Wall Thickness: 8" Floor Height: 8"	Height (Int): 29" Height (Ext): 37"	Weight (Net): 3433 lb Volume (Net): 0.88cu.yd
----------------------------------	-------------------------------	--	--	--