

Job Name: 25-3292 Arbor View Sec. 2
 Job Location: Eminence, KY
 Contractor: Core & Main LP (Lou)

Plant: Beaver Dam

Tech: C.Russ

10/13/2025 1:45:58 PM

PC: J.Jarvis



Structure ID: CBI-A6

P1 MH060BAVF

MH BASE Custom Ht T/n

- P3) 24" x 36" - CASTING HEIGHT - 6"
- P2) 60" - MH FLAT TOP w/24"x36" Hole F/G - 13"
- P1) 60" - MH BASE Custom Ht T/n - 57"
- 1) CASTING - HOE 525 LV SET (F/G/H)
- 1) 60" - Conseal CS-102 1.00"
- 1) 24" x 36" - Conseal CS-102 1.00"
- 1) Hole - 38
- 1) Hole - 30
- 1) Hole - 24
- 5) MH Step ML-10-TDS-NCR - 10"

0 lb
 3499 lb
 7470 lb
 442 lb
 0 lb
 0 lb
 0 lb
 0 lb
 0 lb
 0 lb
 0 lb
 0 lb
 11411 lb

Structure Notes:

1. PER ASTM C478 SPECIFICATIONS.
2. CONCRETE = 4,000 PSI AT 28 DAYS.
3. HOE 525 BY ICAST
4. REINFORCING PER ASTM A615 (GRADE 60).
 - TOP SLAB (As .62) #5 BARS AT 6" C.C.E.W..
 - RISER/WALLS (As .18)
 - FLOOR (As .37) #5 BARS AT 10" C.C.E.W.

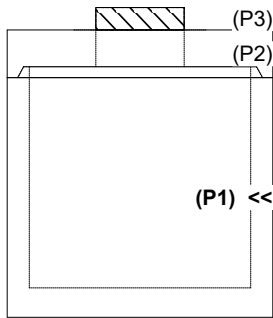
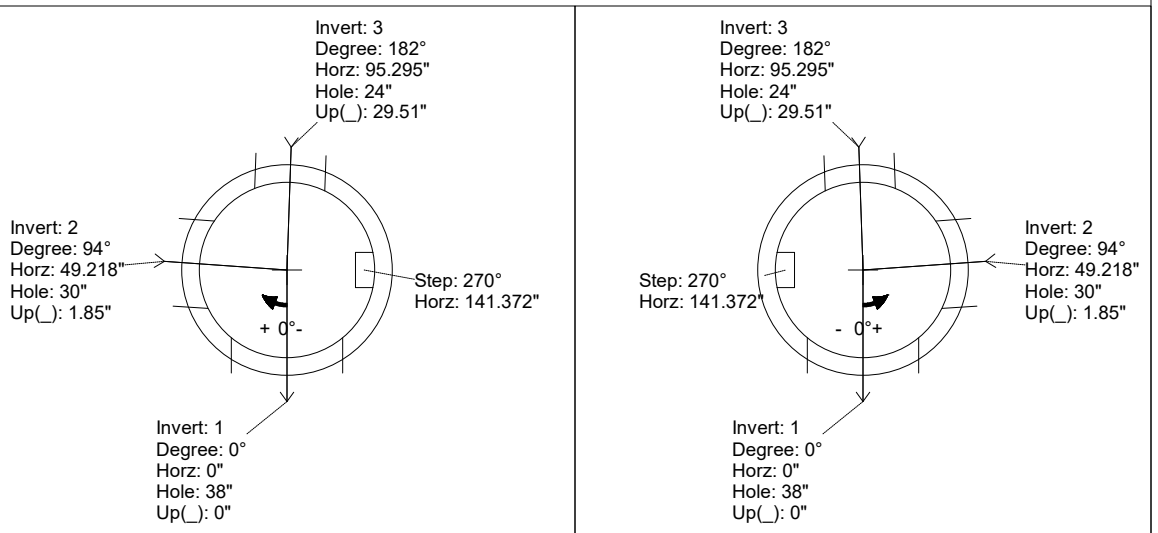
Structure Total: 11411 lb

Rim: 887.78' Rim to Invert: 6.19' Slack: 0.83" Sump: 2.55" Step Position: 270°

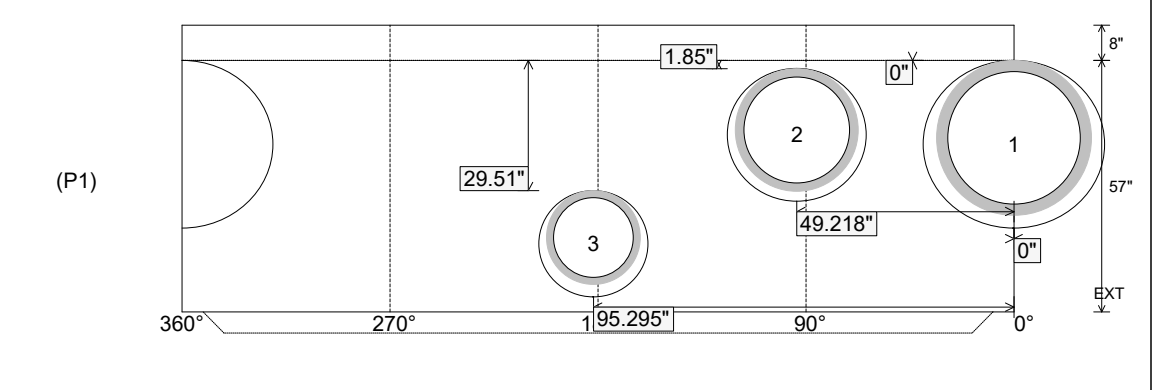
Position	Elev	Angle	Ext. (cw)	Pipe	Pipe OD	Connector	Hole	Horz Size	Up (↓)	Offset
Invert 1	881.59'	0°	0"	30" HDPE	35.1"	Hole 38	38"	41.151"	0"	0"
Invert 2	881.69'	94°	59.062"	24" HDPE	27.8"	Hole 30	30"	31.416"	1.85"	0"
Invert 3	883.97'	182°	114.354"	18" HDPE	21.2"	Hole 24	24"	24.691"	29.51"	0"
Invert 4										
Invert 5										
Invert 6										
Invert 7										
Invert 8										

RIGHT-SIDE UP VIEW (int. dimensions)

UPSIDE-DOWN VIEW (int. dimensions)



INSIDE WALL DIMENSIONS



Coating (Int):
 Coating (Ext):

Seam Up: Tongue
 Seam Dn: n/a

Wall Thickness: 6"
 Floor Height: 8"

Height (Int): 57"
 Height (Ext): 65"

Weight (Net): 7470 lb
 Volume (Net): 1.91cu.yd