

Structure ID: 6

P1 BX28640606-VH

BOX BASE 6inW, 6inF, Variable Ht F/n

P2) 28" x 64" - CASTING HEIGHT - 7.50" P1) 28" x 64" - BOX BASE 6inW, 6inF, Variable Ht F/n - 29" 1) 28" x 64" - Conseal CS-102 1.00" 2) Hole - 22" 1) Hole - 12" 2) LINTEL BAR SLOT n/n - 7"x1"	0 lb 4122 lb 0 lb 0 lb 0 lb 0 lb 0 lb ----- Structure Total: 4122 lb
---	--

Structure Notes:
 1. PER ASTM C913 SPECIFICATIONS.
 2. CONCRETE = 4,000 PSI AT 28 DAYS.
 3. NO INVERT CHANNEL.
 4. CASTING BY OTHERS.

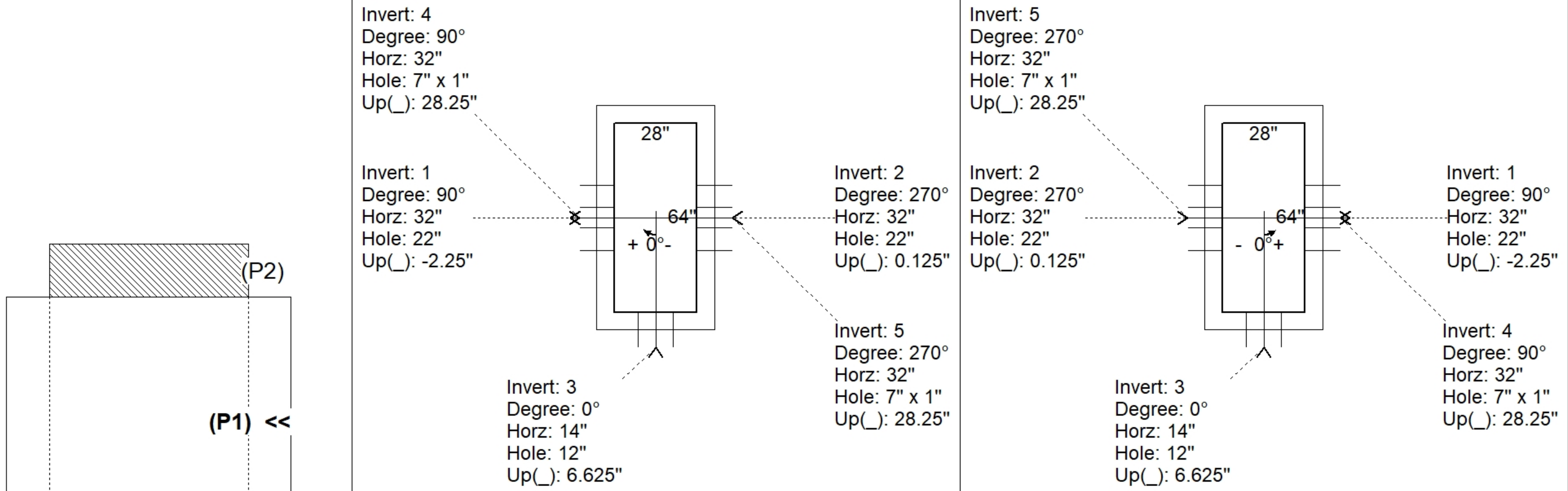
REINFORCING PER ASTM A615 (GRADE 60).
 - WALLS (As .31) #5 BARS AT 12" C.C.E.W.
 - FLOOR (As .31) #5 BARS AT 12" C.C.E.W.

Rim: 579.65' Rim to Invert: 3.1' Slack: 0.7" Sump: 0" Step Position: 0°

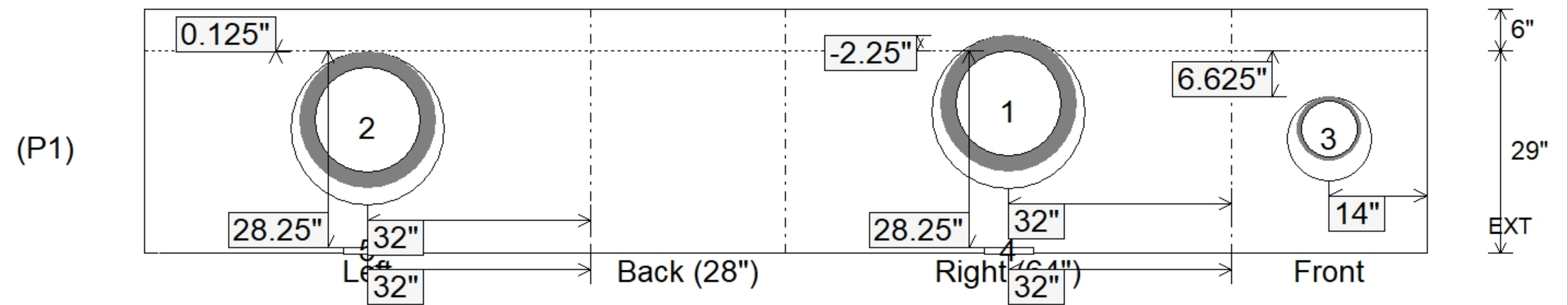
Position	Elev	Angle	Ext. (cw)	Pipe	Pipe OD	Connector	Hole	Horz Size	Up ()	Offset
Invert 1	576.55'	90°	38"	15" RCP B WALL	19.5"	Hole 22	22"	22"	-2.25"	0"
Invert 2	576.75'	270°	38"	15" RCP B WALL	19.5"	Hole 22	22"	22"	0.125"	0"
Invert 3	577.15'	0°	20"	8" HDPE	9.1"	Hole 12	12"	12"	6.625"	0"
Invert 4	578.9'	90°	38"	7" x 1" LINTEL BAR SLOT	7" x 1"	LINTEL BAR SLOT 7"x1"	7" x 1"	7"	28.25"	0"
Invert 5	578.9'	270°	38"	7" x 1" LINTEL BAR SLOT	7" x 1"	LINTEL BAR SLOT 7"x1"	7" x 1"	7"	28.25"	0"
Invert 6										
Invert 7										
Invert 8										

RIGHT-SIDE UP VIEW (int. dimensions)

UPSIDE-DOWN VIEW (int. dimensions)



INSIDE WALL DIMENSIONS



Coating (Int): Coating (Ext):	Seam Up: Flat Seam Dn: n/a	Wall Thickness: 6" Floor Height: 6"	Height (Int): 29" Height (Ext): 35"	Weight (Net): 4122 lb Volume (Net): 1.05cu.yd
----------------------------------	-------------------------------	--	--	--