



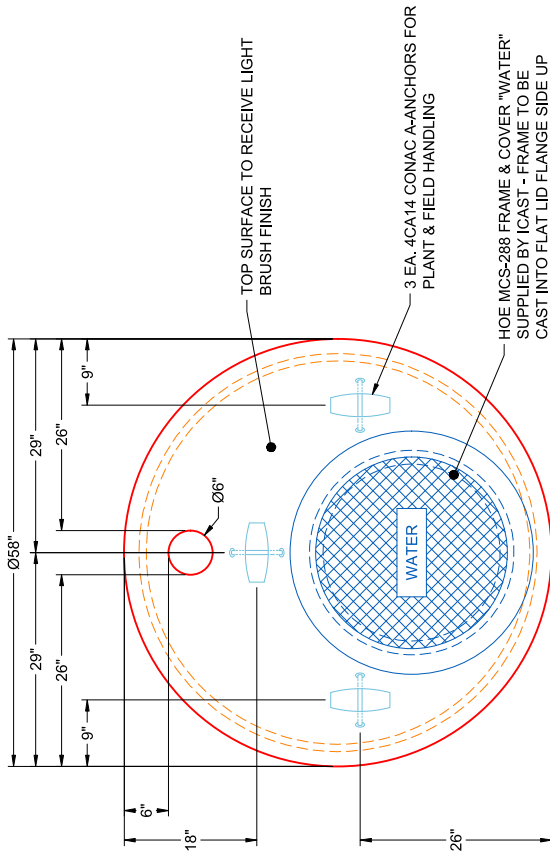
Structure ID: ARV1

P3 MH048LD12S

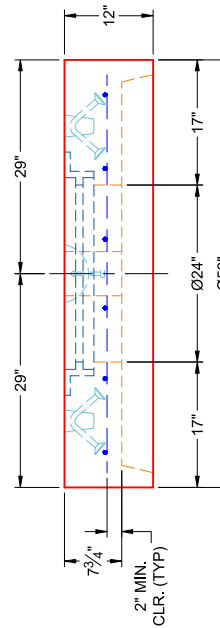
MH FLAT TOP SPECIAL (MCS-288) F/G

GENERAL NOTES:

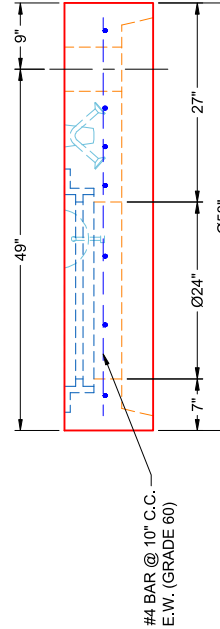
1. MANUFACTURED PER ASTM C-478 (LATEST REVISION)
2. CONCRETE: 5,000 PSI AT 28 DAYS
3. REINFORCEMENT: #4 BAR @ 10" C.C. E.W. (GRADE 60) - 2" MIN. REBAR CLEARANCE (TYP)
4. HOE MCS-288 FRAME & COVER "STORM" SUPPLIED BY ICAST - FRAME TO BE CAST INTO FLAT LID FLANGE SIDE UP
5. WEIGHT: 1,575 LBS
6. Ø6" OPENING REQUIRED IN FLAT LID FOR 4" VENT PIPE
7. LIFTERS: 3 EA. 4CA14 CONAC A-ANCHORS FOR PLANT & FIELD HANDLING
8. TOP SURFACE TO RECEIVE LIGHT BRUSH FINISH



PLAN VIEW



**FRONT VIEW
(RIGHT SIDE UP)**



**SIDE VIEW
(RIGHT SIDE UP)**

PRODUCTION WORK ORDER

PRODUCT I.D.: MH048LD12S
 DESCRIPTION: 48" MANHOLE FLAT LID SPECIAL, 12" HT.

QUALITY CONTROL CHECKLIST	
<input type="checkbox"/>	ALL DIMENSIONS CORRECT.
<input type="checkbox"/>	LIFTERS INSTALLED.
<input type="checkbox"/>	HOLE LOCATION(S) CORRECT.
<input type="checkbox"/>	REINFORCING & SPACING CORRECT.
<input type="checkbox"/>	CASTING LOCATION & ORIENTATION CORRECT.
<input type="checkbox"/>	EDGES CHAMFERED.
<input type="checkbox"/>	GROOVE JOINT INSTALLED.

PRODUCT VIEW: RIGHT SIDE UP	CUSTOMER: TWIN STATES UTILITIES, INC.
PLANT: BEAVER DAM, KY	PROJECT: HWY 111 WATER TRANSMISSION MAIN
WEIGHT: 1,575 LBS	STRUCTURE: ARV1
TOP SECTION JOINT: GROOVE	ORDER NO: 25-2821
BASE SECTION JOINT: N/A	PE: J.H. ROSS
QC CHECK INITIALS:	DRAWING: K. CARDWELL
	DATE: 01/26/26
	SCALE: NTS
	PG. 1 OF 1



THIS DRAWING IS THE PROPERTY OF INFRASTRUCTURE PRECAST, INC. ANY USE OR DUPLICATION OF THIS DRAWING WITHOUT PRIOR AUTHORIZATION IS STRICTLY PROHIBITED.

Job Number:

25-2821

Job Name:

Hwy 111 Water Transmission Main

Structure:

ARV1

Note:

HOE MCS-288 Frame Supplied By
iCast To Be Cast Into Flat Lid Flange
Side Up