

Structure ID: YD-D10

P1 BX2424-08BAVF

BOX BASE 8inW, 8inF, Variable Ht F/n

P2) 24" x 24" - CASTING HEIGHT - 4" P1) 24" x 24" - BOX BASE 8inW, 8inF, Variable Ht F/n - 21" 1) CASTING - HOE 280T F/G 1) 24" x 24" - Conseal CS-102 1.00" 2) Hole - 16 1) Hole - 8	<table style="width:100%; border-collapse: collapse;"> <tr><td>0 lb</td></tr> <tr><td>2561 lb</td></tr> <tr><td>182 lb</td></tr> <tr><td>0 lb</td></tr> <tr><td>0 lb</td></tr> <tr><td>0 lb</td></tr> <tr><td>-----</td></tr> <tr><td>Structure Total: 2743 lb</td></tr> </table>	0 lb	2561 lb	182 lb	0 lb	0 lb	0 lb	-----	Structure Total: 2743 lb
0 lb									
2561 lb									
182 lb									
0 lb									
0 lb									
0 lb									

Structure Total: 2743 lb									

Structure Notes:

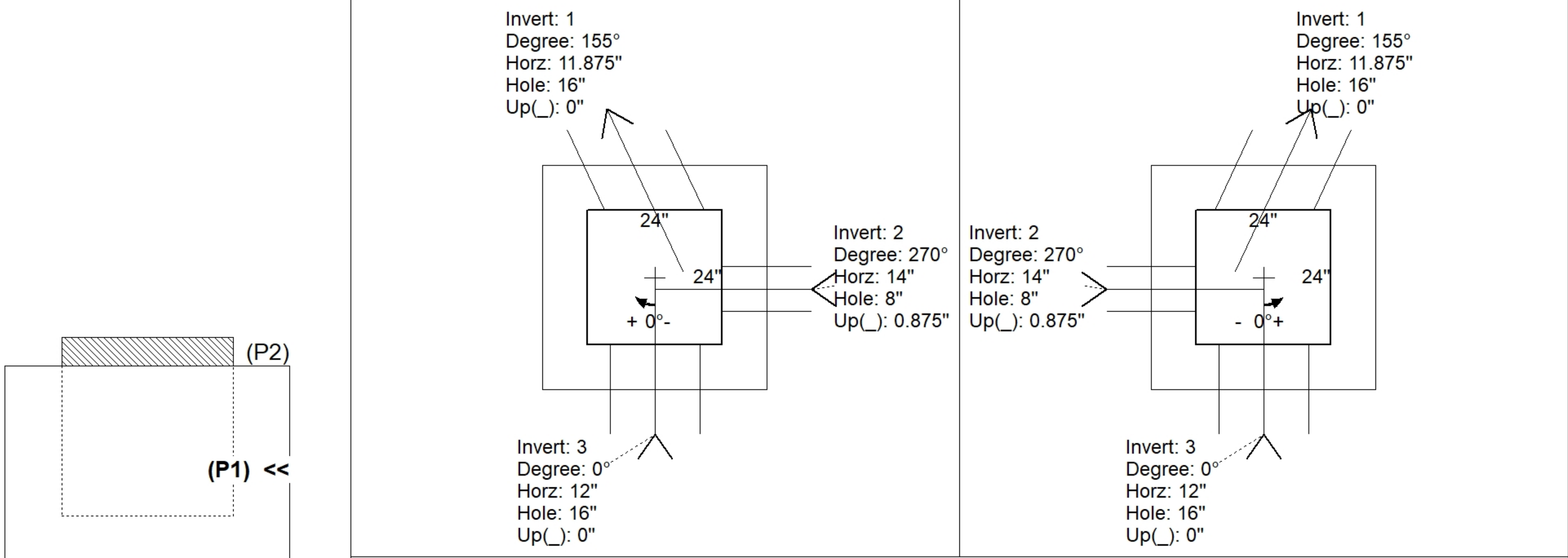
1. HOE 280T F/G PROVIDED BY ICAST.
2. PER ASTM C913 SPECIFICATIONS.
3. CONCRETE = 4,000 PSI AT 28 DAYS.
4. NO INVERT CHANNEL.
5. REINFORCING PER ASTM A615 (GRADE 60).
 - WALLS (As .31) #5 BARS AT 12" C.C.E.W.
 - FLOOR (As .31) #5 BARS AT 12" C.C.E.W.

Rim: 544.38' Rim to Invert: 2' Slack: 0.25" Sump: 1.25" Step Position:

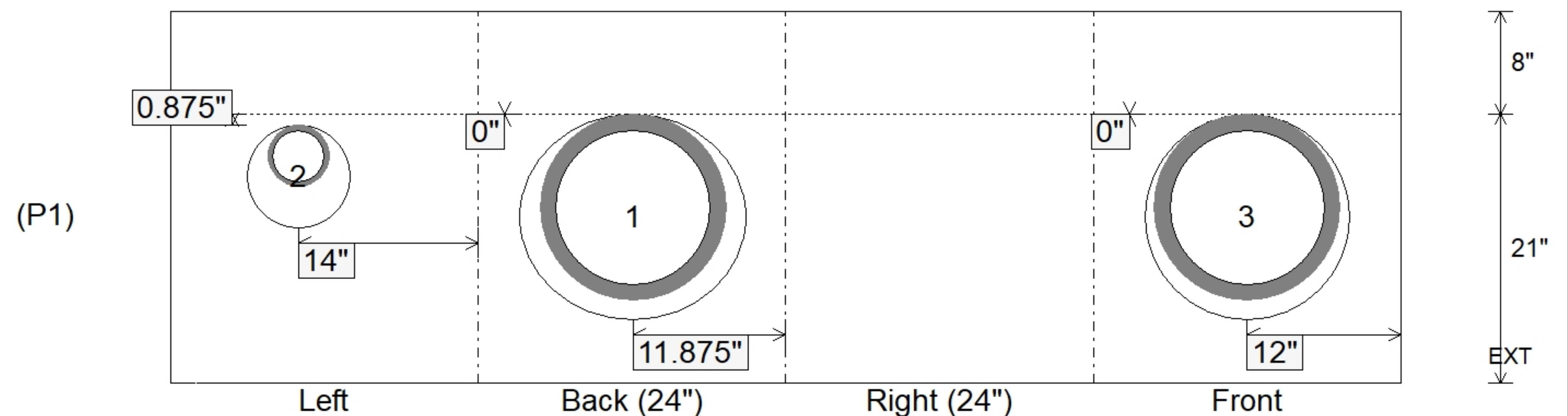
Position	Elev	Angle	Ext. (cw)	Pipe	Pipe OD	Connector	Hole	Horz Size	Up ()	Offset
Invert 1	542.38'	155°	16.25"	12" HDPE	14.5"	Hole 16	16"	17.654"	0"	5"
Invert 2	542.38'	270°	22"	4" HDPE	4.8"	Hole 8	8"	8"	0.875"	2"
Invert 3	542.38'	0°	20"	12" HDPE	14.5"	Hole 16	16"	16"	0"	0"
Invert 4										
Invert 5										
Invert 6										
Invert 7										
Invert 8										

RIGHT-SIDE UP VIEW (int. dimensions)

UPSIDE-DOWN VIEW (int. dimensions)



INSIDE WALL DIMENSIONS



Coating (Int): Coating (Ext):	Seam Up: Flat Seam Dn: n/a	Wall Thickness: 8" Floor Height: 8"	Height (Int): 21" Height (Ext): 29"	Weight (Net): 2561 lb Volume (Net): 0.65cu.yd
----------------------------------	-------------------------------	--	--	--