

Job Name: 25-2801 St. Joseph's Children's Home Improvements
 Job Location: Louisville, KY
 Contractor: E-Z Construction Co. Inc.

Plant: 100

11/25/2025 8:16:13 PM

Tech: J. Horsley - A

PC: Jay Ross Jarvis



Structure ID: JB-532.64

P2 MH048LD07SP

MH FLAT TOP SPECIAL (MCS-295) F/F

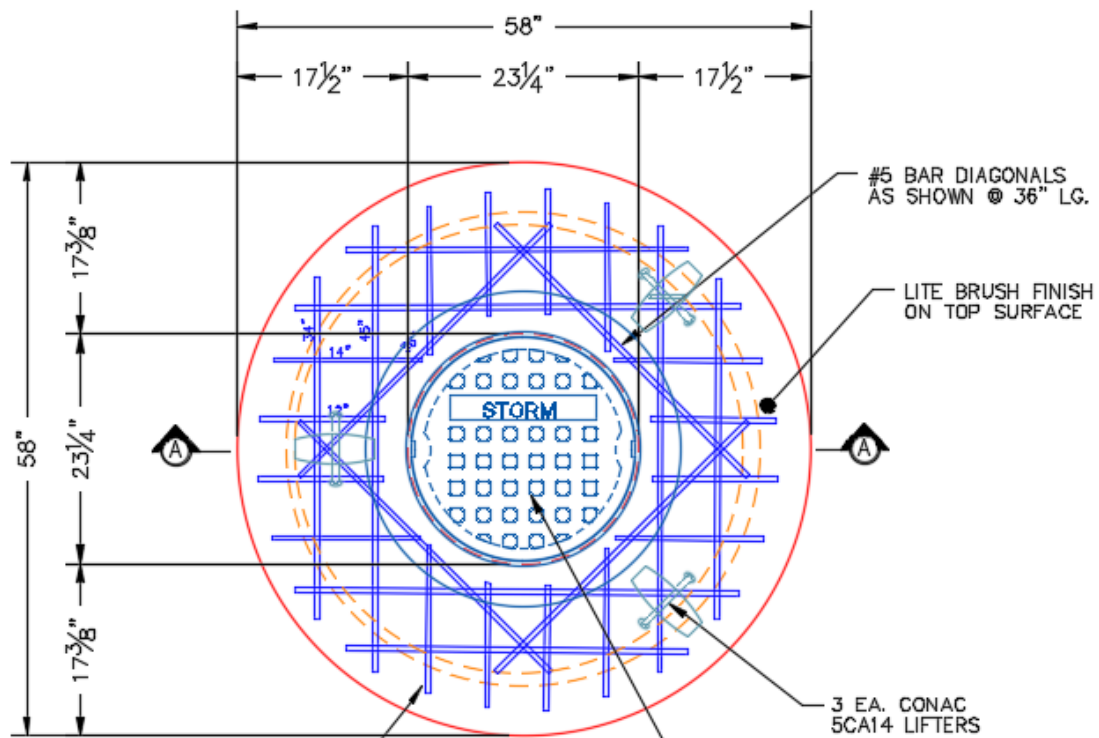
- P3) 24" - CASTING HEIGHT - 0"
- P2) 48" - MH FLAT TOP SPECIAL (MCS-295) F/F - 7"
- P1) 48" - MH BASE Custom Ht F/n - 28"
- 1) CASTING - HOE MCS-295 Frame
- 1) CASTING - HOE MC-420 Cover Storm LOU-MSD
- 1) 48" - Conseal CS-102 1.00"
- 1) Hole - 24
- 2) Hole - 16

- 0 lb
- 1699 lb
- 2915 lb
- 123 lb
- 340 lb
- 0 lb
- 0 lb
- 0 lb
- 0 lb

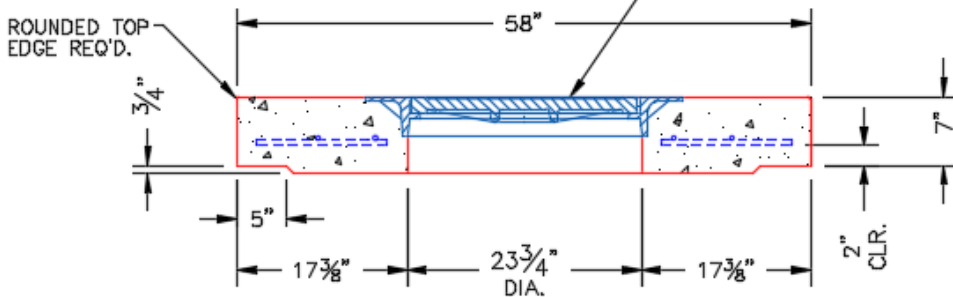
Structure Total: 5077 lb

Structure Notes:

1. HOE MCS-295 FRAME PROVIDED BY ICAST.
2. MCS-295 FRAME TO BE CAST INTO THE TOP SLAB.
3. PER ASTM C478 SPECIFICATIONS.
4. CONCRETE = 4,000 PSI AT 28 DAYS.
5. REINFORCING PER ASTM A615 (GRADE 60).
 - TOP SLAB (As .62) #5 BARS AT 6" C.C.E.W..
 - RISER/WALLS (As .12)
 - FLOOR (As .31) #5 BARS AT 12" C.C.E.W.



PLAN VIEW



SECTION A-A

- #5 BAR CUT LIST**
- 4 EA. @ 45"
 - 4 EA. @ 36"
 - 4 EA. @ 34"
 - 8 EA. @ 14"
 - 8 EA. @ 12"

Coating (Int):
 Coating (Ext):

Seam Up: Flat
 Seam Dn: Flat

Wall Thickness: 5"

Height (Ext): 7"

Weight (Net): 1699 lb
 Volume (Net): 0.43cu.yd