

Job Name: 25-2801 St. Joseph's Children's Home Improvements
 Job Location: Louisville, KY
 Contractor: E-Z Construction Co. Inc.

Plant: 100

11/25/2025 2:28:55 PM

Tech: J. Horsley - A

PC: Jay Ross Jarvis



Structure ID: JB-531.37

P2 BX036060-08LD08S

BX FLAT LID 8"W w/24" HOLE F/F

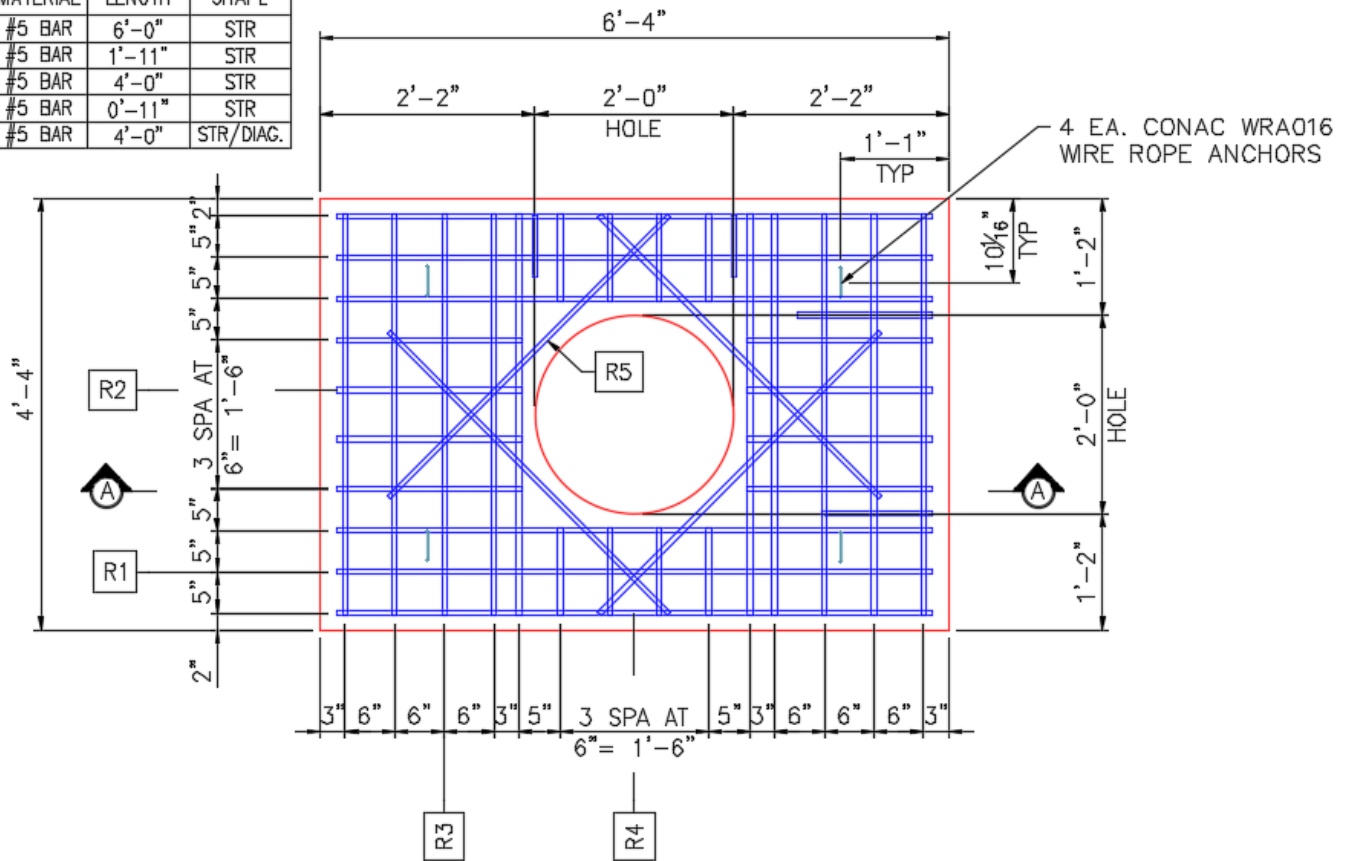
- P3) 24" - CASTING HEIGHT - 7"
- P2) 36" x 60" - BX FLAT LID 8"W w/24" HOLE F/F - 8"
- P1) 36" x 60" - BOX BASE 8inW, 8inF, Variable Ht F/n - 28"
- 1) CASTING - HOE MC-420 F/C Storm
- 1) 36" x 60" - Conseal CS-102 1.00"
- 2) Hole - 22
- 1) Hole - 24

0 lb
 2349 lb
 5993 lb
 340 lb
 0 lb
 0 lb
 0 lb

 Structure Total: 8683 lb

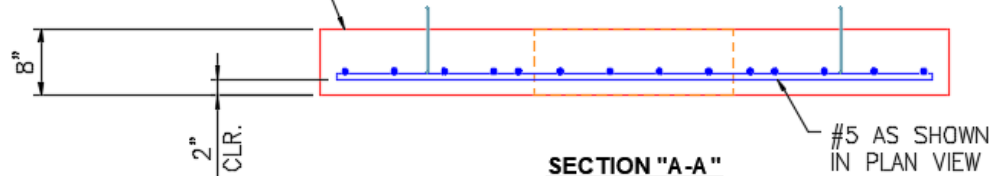
- Structure Notes:**
1. HOE MC-420 F/C "STORM" PROVIDED BY ICAST.
 2. PER ASTM C913 SPECIFICATIONS.
 3. CONCRETE = 4,000 PSI AT 28 DAYS.
 4. NO INVERT CHANNEL.
 5. REINFORCING PER ASTM A615 (GRADE 60).
 - TOP SLAB (As .62) #5 BARS AT 6" C.C.E.W.
 - WALLS (As .31) #5 BARS AT 12" C.C.E.W.
 - FLOOR (As .31) #5 BARS AT 12" C.C.E.W.

REINFORCEMENT CUT LIST				
BAR	QTY	MATERIAL	LENGTH	SHAPE
R1	6	#5 BAR	6'-0"	STR
R2	8	#5 BAR	1'-11"	STR
R3	10	#5 BAR	4'-0"	STR
R4	8	#5 BAR	0'-11"	STR
R5	4	#5 BAR	4'-0"	STR/DIAG.



FLOATED FINISH
ON TOP SURFACE

PLAN VIEW



SECTION "A-A"

Coating (Int):
Coating (Ext):

Seam Up: Flat
Seam Dn: Flat

Wall Thickness: 8"

Height (Ext): 8"

Weight (Net): 2349 lb
Volume (Net): 0.6cu.yd