

Job Name: 25-2801 St. Joseph's Children's Home Improvements
 Job Location: Louisville, KY
 Contractor: E-Z Construction Co. Inc.

Plant: 100

11/25/2025 2:28:26 PM

Tech: J. Horsley - A

PC: Jay Ross Jarvis



Structure ID: JB-531.37

P1 BX3660-08BAVF

BOX BASE 8inW, 8inF, Variable Ht F/n

- P3) 24" - CASTING HEIGHT - 7"
- P2) 36" x 60" - BX FLAT LID 8"W w/24" HOLE F/F - 8"
- P1) 36" x 60" - BOX BASE 8inW, 8inF, Variable Ht F/n - 28"
- 1) CASTING - HOE MC-420 F/C Storm
- 1) 36" x 60" - Conseal CS-102 1.00"
- 2) Hole - 22
- 1) Hole - 24

0 lb
 2349 lb
 5993 lb
 340 lb
 0 lb
 0 lb
 0 lb
 8683 lb

Structure Total:

Structure Notes:

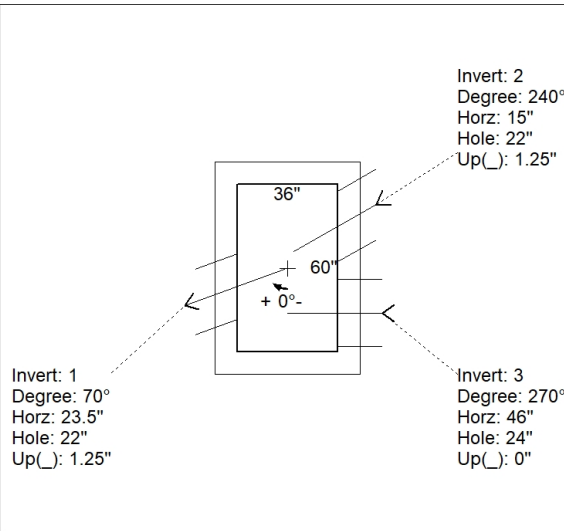
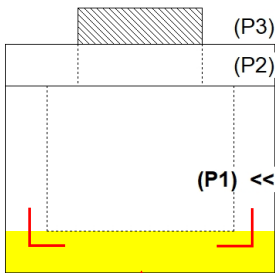
1. HOE MC-420 F/C "STORM" PROVIDED BY ICAST.
2. PER ASTM C913 SPECIFICATIONS.
3. CONCRETE = 4,000 PSI AT 28 DAYS.
4. NO INVERT CHANNEL.
5. REINFORCING PER ASTM A615 (GRADE 60).
 - TOP SLAB (As .62) #5 BARS AT 6" C.C.E.W.
 - WALLS (As .31) #5 BARS AT 12" C.C.E.W.
 - FLOOR (As .31) #5 BARS AT 12" C.C.E.W.

Rim: 534.89' Rim to Invert: 3.52' Slack: 0.86" Sump: 1.62" Step Position:

Position	Elev	Angle	Ext. (cw)	Pipe	Pipe OD	Connector	Hole	Horz Size	Up ()	Offset
Invert 1	531.37'	70°	28.5"	18" PVC SDR35	18.75"	Hole 22	22"	23.412"	1.25"	0"
Invert 2	531.37'	240°	18.375"	18" PVC SDR35	18.75"	Hole 22	22"	25.403"	1.25"	-4"
Invert 3	531.37'	270°	54"	18" HDPE	21.2"	Hole 24	24"	24"	0"	16"
Invert 4										
Invert 5										
Invert 6										
Invert 7										
Invert 8										

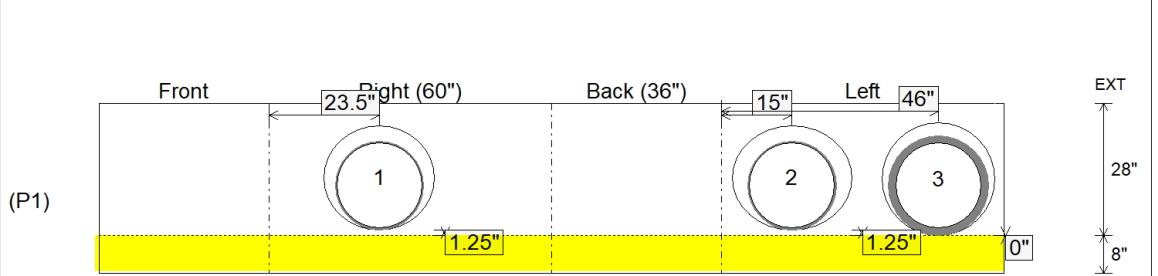
RIGHT-SIDE UP VIEW (int. dimensions)

UPSIDE-DOWN VIEW (int. dimensions)



1ST POUR (FLOOR) = 2,651 LBS
 2ND POUR (WALLS) = 3,342 LBS

INSIDE WALL DIMENSIONS



1ST POUR (FLOOR)
 STUB #5 L BARS OUT TOP
 OF FLOOR AT 12" C/C
 FOR CONNECTING WALLS

Coating (Int): Coating (Ext):	Seam Up: Flat Seam Dn: n/a	Wall Thickness: 8" Floor Height: 8"	Height (Int): 28" Height (Ext): 36"	Weight (Net): 5993 lb Volume (Net): 1.53cu.yd
----------------------------------	-------------------------------	--	--	--

Job Name: 25-2801 St. Joseph's Children's Home Improvements
 Job Location: Louisville, KY
 Contractor: E-Z Construction Co. Inc.

Plant: 100

11/25/2025 2:28:26 PM

Tech: J. Horsley - A

PC: Jay Ross Jarvis



Structure ID: JB-531.37

P1A BX3660-08BAVF

BOX BASE 8inW, 8inF, Variable Ht F/n

- P3) 24" - CASTING HEIGHT - 7"
- P2) 36" x 60" - BX FLAT LID 8"W w/24" HOLE F/F - 8"
- P1) 36" x 60" - BOX BASE 8inW, 8inF, Variable Ht F/n - 28"
- 1) CASTING - HOE MC-420 F/C Storm
- 1) 36" x 60" - Conseal CS-102 1.00"
- 2) Hole - 22
- 1) Hole - 24

0 lb
 2349 lb
 5993 lb
 340 lb
 0 lb
 0 lb
 0 lb
 Structure Total: 8683 lb

Structure Notes:

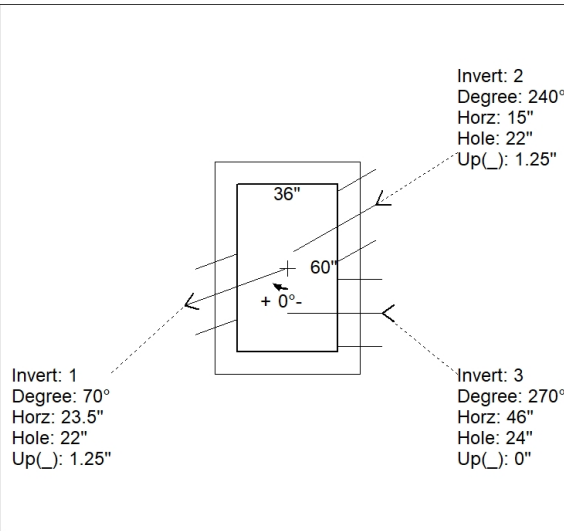
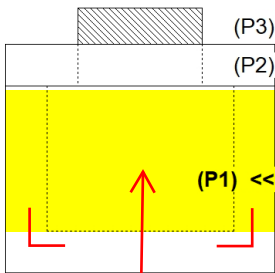
1. HOE MC-420 F/C "STORM" PROVIDED BY ICAST.
2. PER ASTM C913 SPECIFICATIONS.
3. CONCRETE = 4,000 PSI AT 28 DAYS.
4. NO INVERT CHANNEL.
5. REINFORCING PER ASTM A615 (GRADE 60).
 - TOP SLAB (As .62) #5 BARS AT 6" C.C.E.W.
 - WALLS (As .31) #5 BARS AT 12" C.C.E.W.
 - FLOOR (As .31) #5 BARS AT 12" C.C.E.W.

Rim: 534.89' Rim to Invert: 3.52' Slack: 0.86" Sump: 1.62" Step Position:

Position	Elev	Angle	Ext. (cw)	Pipe	Pipe OD	Connector	Hole	Horz Size	Up ()	Offset
Invert 1	531.37'	70°	28.5"	18" PVC SDR35	18.75"	Hole 22	22"	23.412"	1.25"	0"
Invert 2	531.37'	240°	18.375"	18" PVC SDR35	18.75"	Hole 22	22"	25.403"	1.25"	-4"
Invert 3	531.37'	270°	54"	18" HDPE	21.2"	Hole 24	24"	24"	0"	16"
Invert 4										
Invert 5										
Invert 6										
Invert 7										
Invert 8										

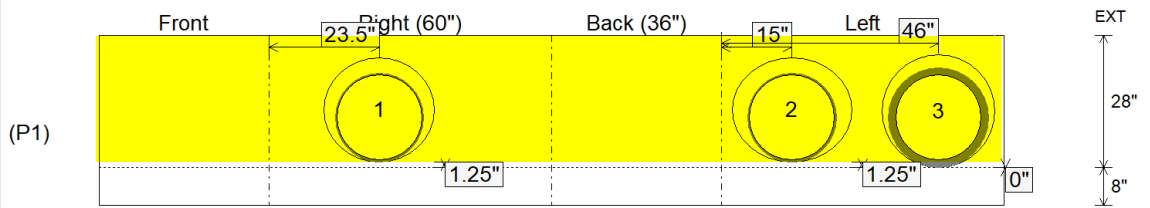
RIGHT-SIDE UP VIEW (int. dimensions)

UPSIDE-DOWN VIEW (int. dimenions)



1ST POUR (FLOOR) = 2,651 LBS
 2ND POUR (WALLS) = 3,342 LBS

INSIDE WALL DIMENSIONS



Coating (Int):
 Coating (Ext):

Seam Up: Flat
 Seam Dn: n/a

Wall Thickness: 8"
 Floor Height: 8"

Height (Int): 28"
 Height (Ext): 36"

Weight (Net): 5993 lb
 Volume (Net): 1.53cu.yd