

Job Name: 25-2801 St. Joseph's Children's Home Improvements
 Job Location: Louisville, KY
 Contractor: E-Z Construction Co. Inc.

Plant: 100

11/25/2025 2:28:55 PM

Tech: J. Horsley - A

PC: Jay Ross Jarvis



Structure ID: CI-D7

P2 MH048LD07SP

MH FLAT TOP w/24"x24" Hole F/F

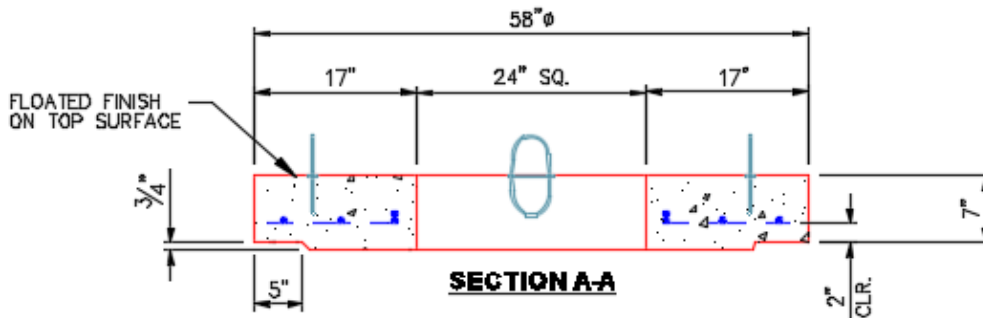
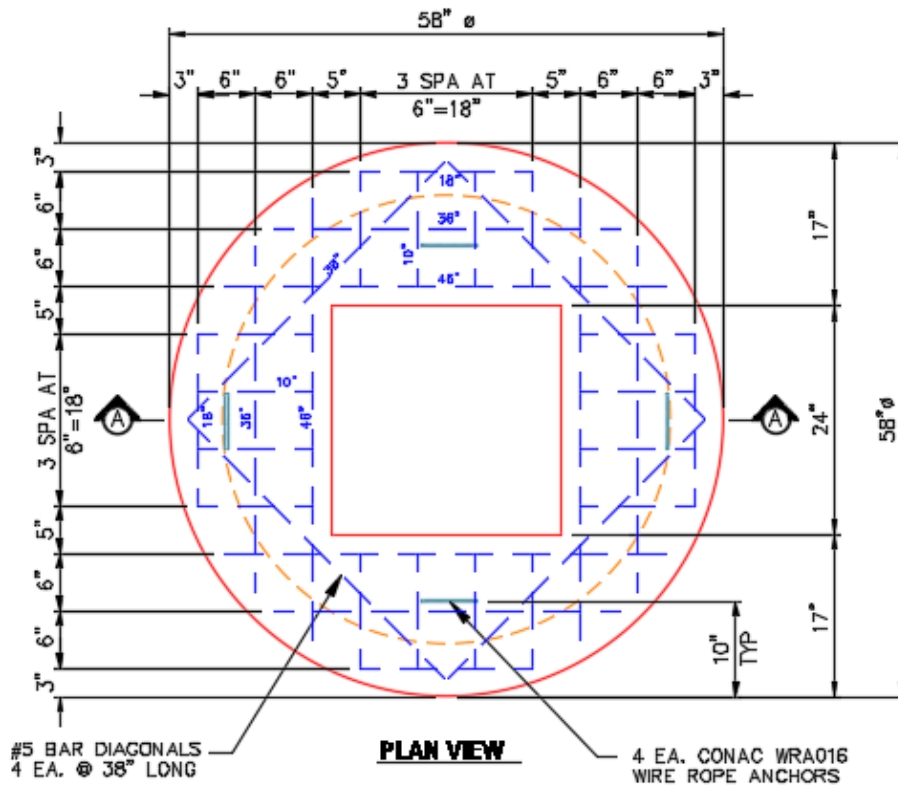
- P3) 24" x 24" - CASTING HEIGHT - 6"
- P2) 48" - MH FLAT TOP w/24"x24" Hole F/F - 7"
- P1) 48" - MH BASE Custom Ht F/n - 34"
- 1) CASTING - HOE 360 Set (F/G/H)
- 1) 48" - Conseal CS-102 1.00"
- 1) 24" x 24" - Conseal CS-102 1.00"
- 3) Hole - 16

- 0 lb
- 1214 lb
- 3448 lb
- 362 lb
- 0 lb
- 0 lb
- 0 lb
- 0 lb

Structure Total: 5024 lb

Structure Notes:

1. HOE 360 SET PROVIDED BY ICAST.
2. PER ASTM C478 SPECIFICATIONS.
3. CONCRETE = 4,000 PSI AT 28 DAYS.
4. REINFORCING PER ASTM A615 (GRADE 60).
 - TOP SLAB (As .62) #5 BARS AT 6" C.C.E.W..
 - RISER/WALLS (As .12)
 - FLOOR (As .31) #5 BARS AT 12" C.C.E.W.



- #5 BAR CUT LIST**
- 4 EA. @ 46"
 - 4 EA. @ 36"
 - 4 EA. @ 18"
 - 4 EA. @ 38"
 - 12 EA. @ 12"

Coating (Int):
 Coating (Ext):

Seam Up: Flat
 Seam Dn: Flat

Wall Thickness: 5"

Height (Ext): 7"

Weight (Net): 1214 lb
 Volume (Net): 0.31cu.yd