

Job Name: 25-2797 - US 31 W & Marlin RD Improvements	Plant: Beaver Dam	Tech: J. Coppage	
Job Location: White House, TN Contractor: Scotty's Contracting & Stone, LLC	10/10/2025 4:00:28 PM	PC: C. Goff	

Structure ID: CB5

P1 BX036096-08W08F-BAVF

BOX BASE 8inW, 8inF, Variable Ht F/n

P3) 20" x 30" - CASTING HEIGHT - 6"	0 lb
P2) 36" x 96" - BX FLAT TOP 8"W - TDOT (2-20"x30" HOLES) F/F - 10"	3880 lb
P1) 36" x 96" - BOX BASE 8inW, 8inF, Variable Ht F/n - 36"	10350 lb
1) 36" x 96" - SGL 1"x14.5' Butyl (2x)	0 lb
2) Hole - 26	0 lb
Structure Total:	14230 lb

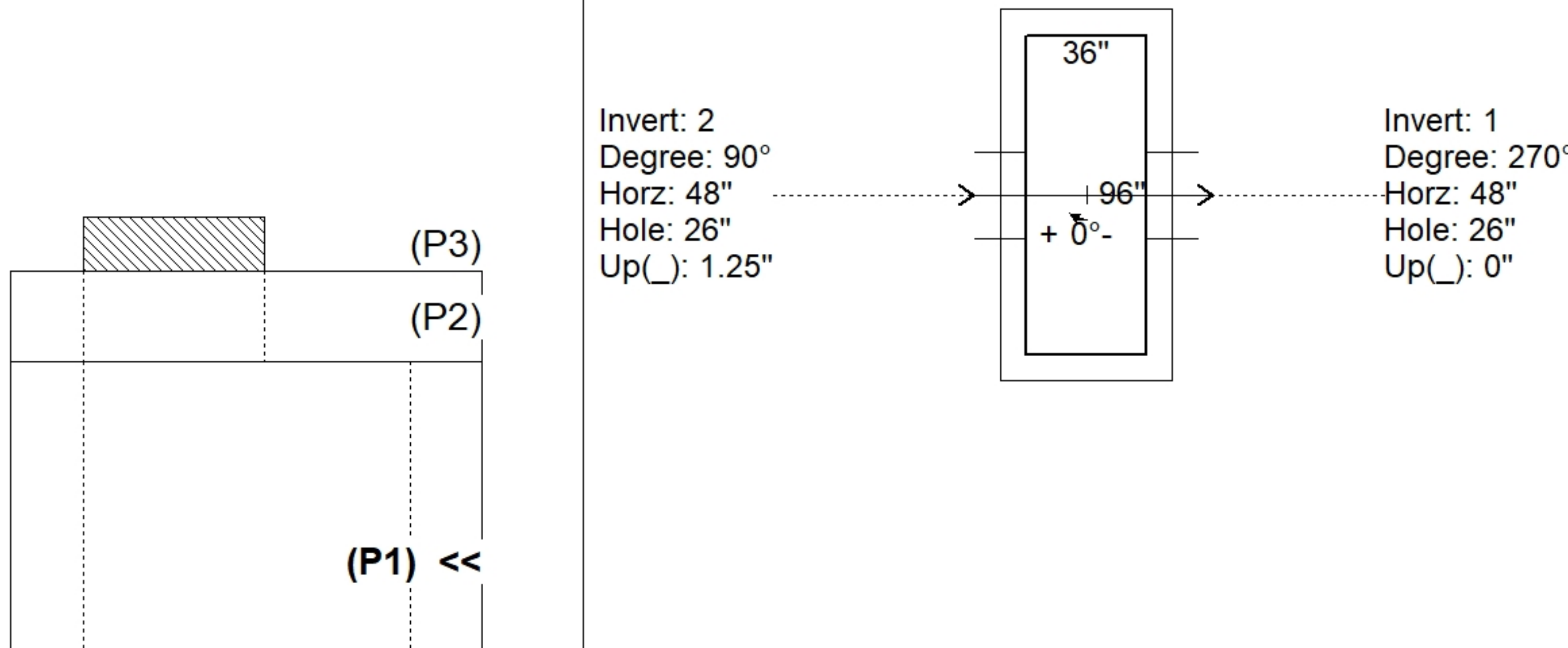
Structure Notes:
 1. 2X JBS-3200 MOD. PROVIDED BY ICAST
 2. PER TDOT D-CB-14S / ASTM C913 SPEC'S.
 3. CONCRETE = 4,000 PSI AT 28 DAYS.
 4. REINFORCING PER ASTM A615 (GRADE 60).
 PER TDOT STD DRAWING D-CB-14S MODIFIED
 - TOP SLAB - DBL MAT #5 BARS.
 - WALLS (As .77) #5 BARS AT 5" C.C.E.W.
 - FLOOR (As .47) #5 BARS AT 8" C.C.E.W.

Rim: 886.13' Rim to Invert: 4.13' Slack: 0.06" Sump: 2.5" Step Position:

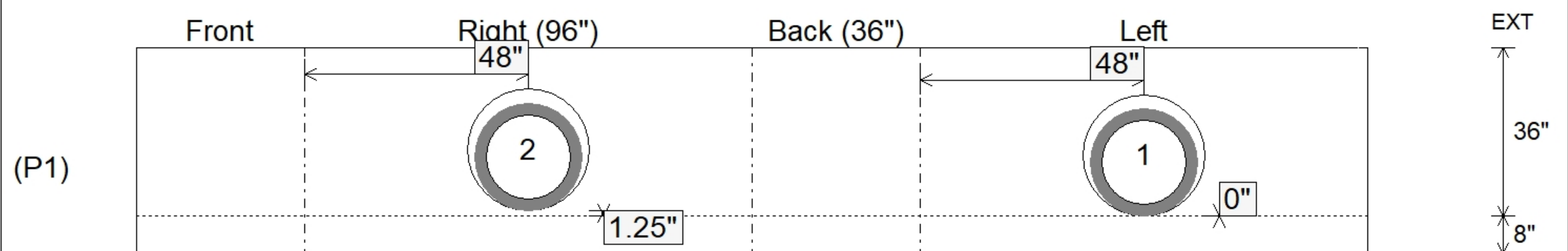
Position	Elev	Angle	Ext. (cw)	Pipe	Pipe OD	Connector	Hole	Horz Size	Up ()	Offset
Invert 1	882'	270°	56"	18" RCP B WALL	23"	Hole 26	26"	26"	0"	0"
Invert 2	882.1'	90°	56"	18" RCP B WALL	23"	Hole 26	26"	26"	1.25"	0"
Invert 3										
Invert 4										
Invert 5										
Invert 6										
Invert 7										
Invert 8										

RIGHT-SIDE UP VIEW (int. dimensions)

UPSIDE-DOWN VIEW (int. dimensions)



INSIDE WALL DIMENSIONS



Coating (Int):	Seam Up: Flat	Wall Thickness: 8"	Height (Int): 36"	Weight (Net): 10350 lb
Coating (Ext):	Seam Dn: n/a	Floor Height: 8"	Height (Ext): 44"	Volume (Net): 2.64cu.yd