

Job Name: 25-2792 Posey Co. Solar Field at AB Brown
 Job Location: Mt Vernon, IN
 Contractor: Russell's Excavating

Plant: Beaver Dam
 10/30/2025 9:00:58 AM

Tech: J. Horsley
 PC: E. Bradley



Structure ID: OCS (24x24)

P1 BX2424-08BAVF

BOX BASE 8inW, 8inF, Variable Ht F/n

- P2) 24" x 24" - CASTING HEIGHT - 7"
- P1) 24" x 24" - BOX BASE 8inW, 8inF, Variable Ht F/n - 21"
- 1) 24" x 24" - Conseal CS-102 1.00"
- 1) Hole - 14
- 1) Hole - 6

0 lb
 2756 lb
 0 lb
 0 lb
 0 lb

 Structure Total: 2756 lb

Structure Notes:
 1. PER ASTM C913 SPECIFICATIONS.
 2. CONCRETE = 4,000 PSI AT 28 DAYS.
 3. NO INVERT CHANNEL.
 4. CASTING BY ICAST (EJ 10222 Fr./EJ 1020 Grate).

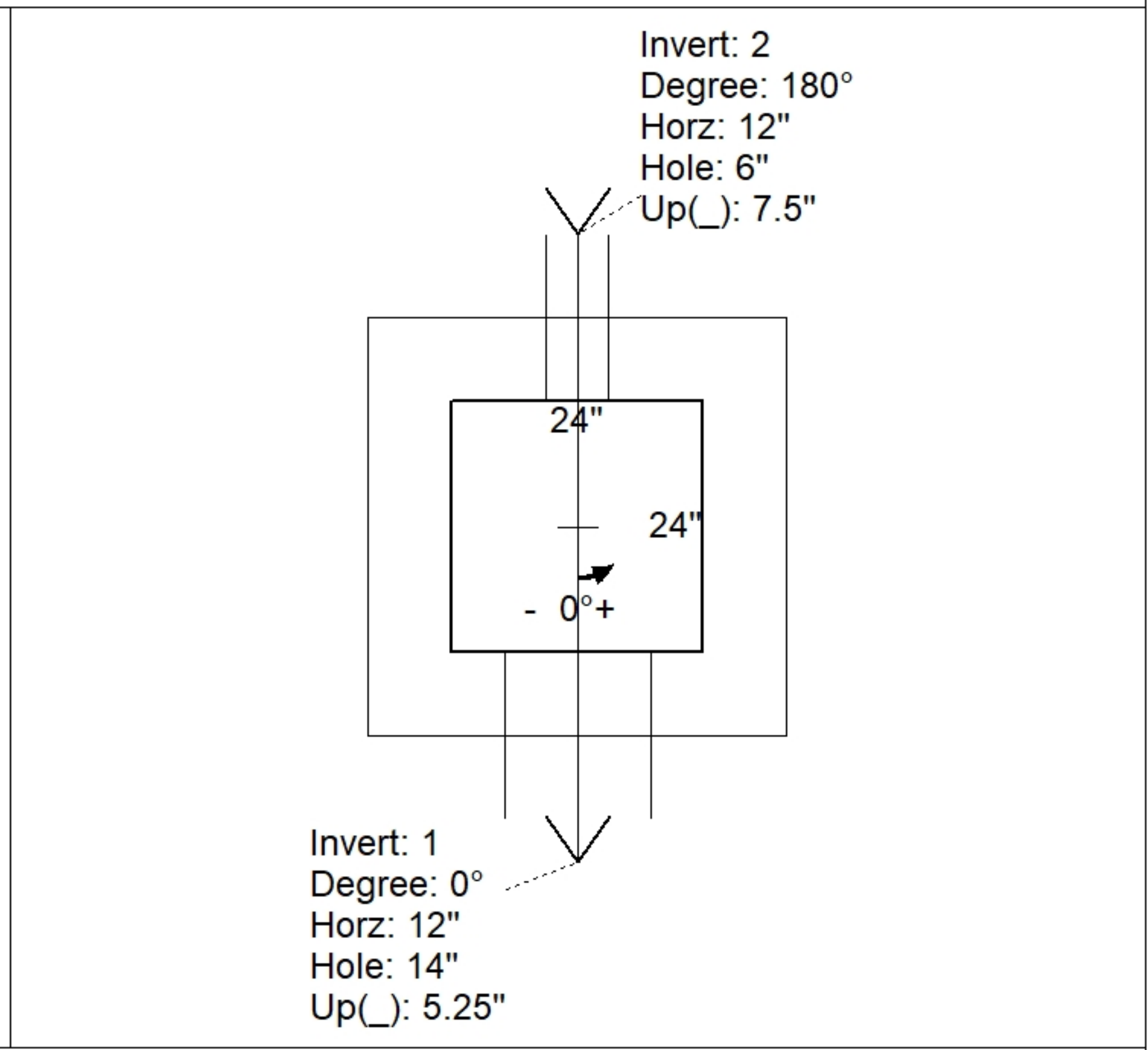
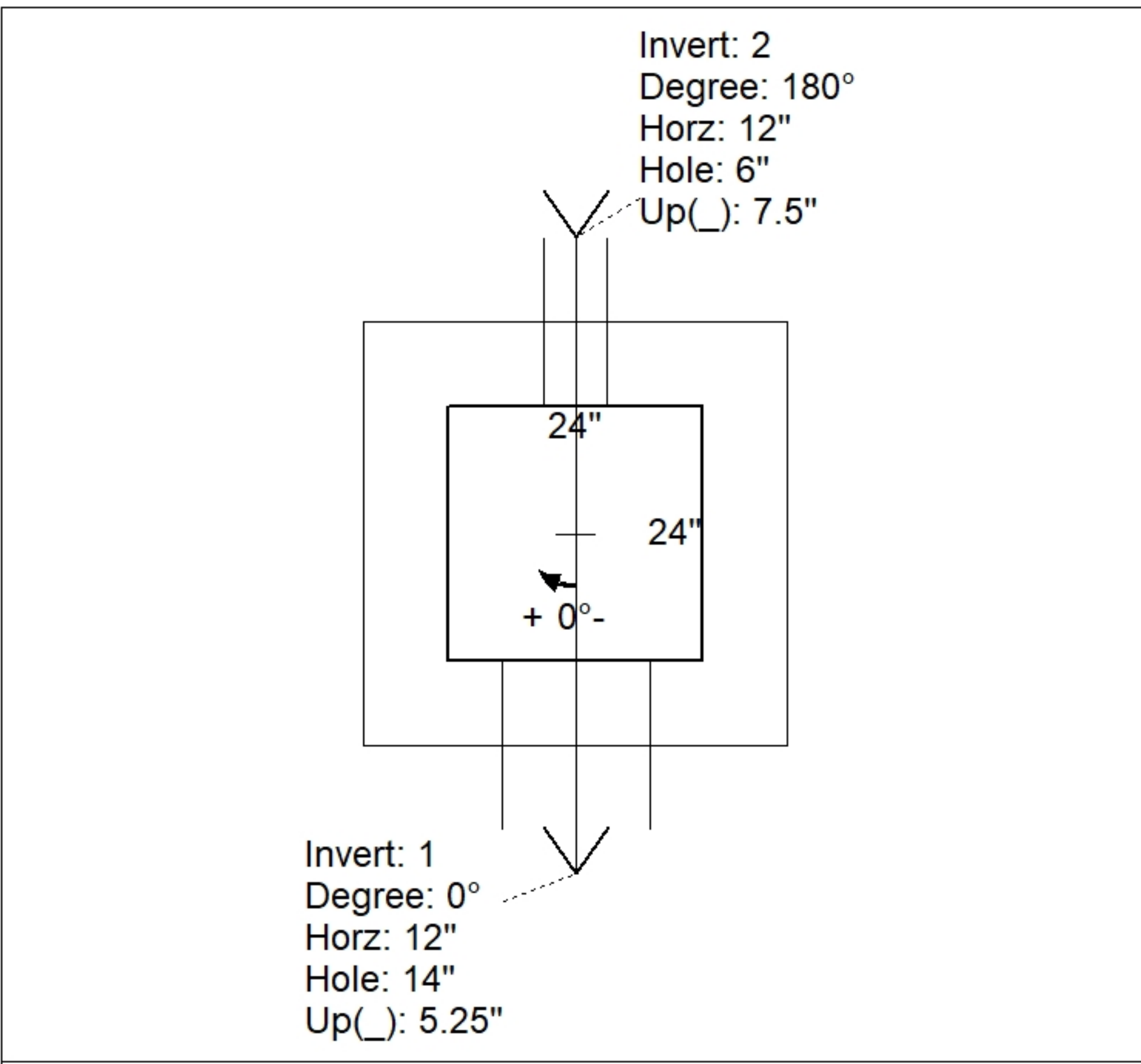
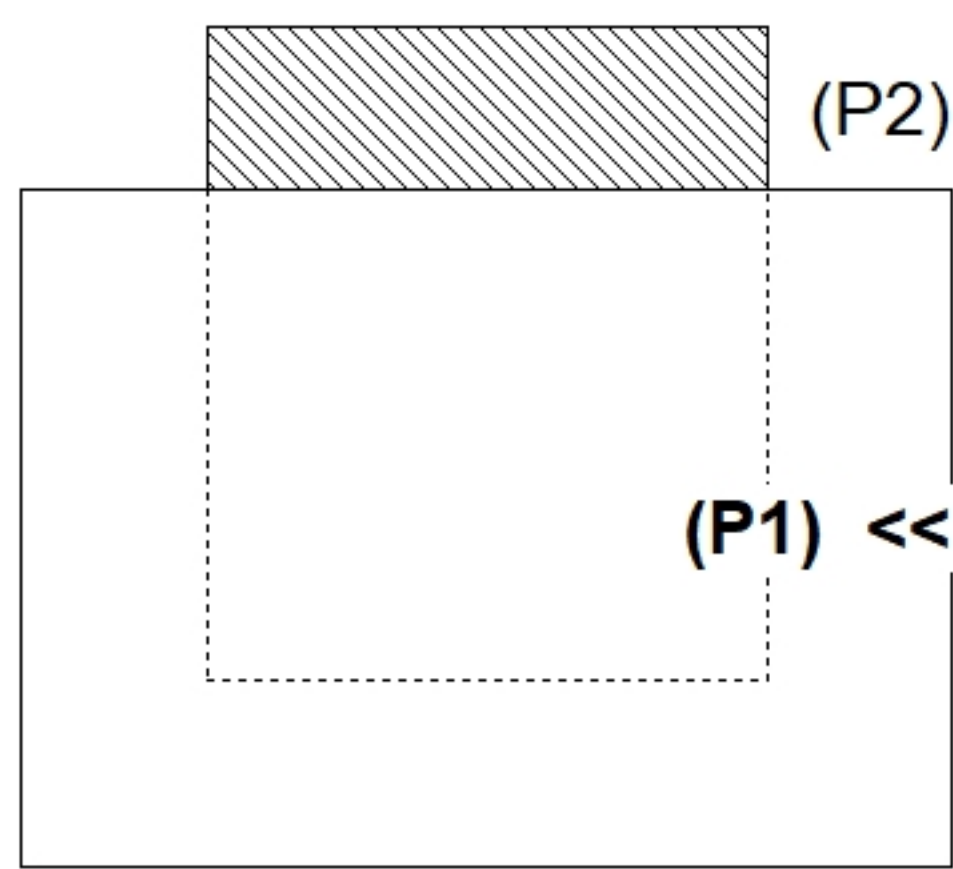
REINFORCING PER ASTM A615 (GRADE 60).
 - WALLS (As .31) #5 BARS AT 12" C.C.E.W.
 - FLOOR (As .31) #5 BARS AT 12" C.C.E.W.

Rim: 443.44' Rim to Invert: 1.83' Slack: -0.04" Sump: 6" Step Position:

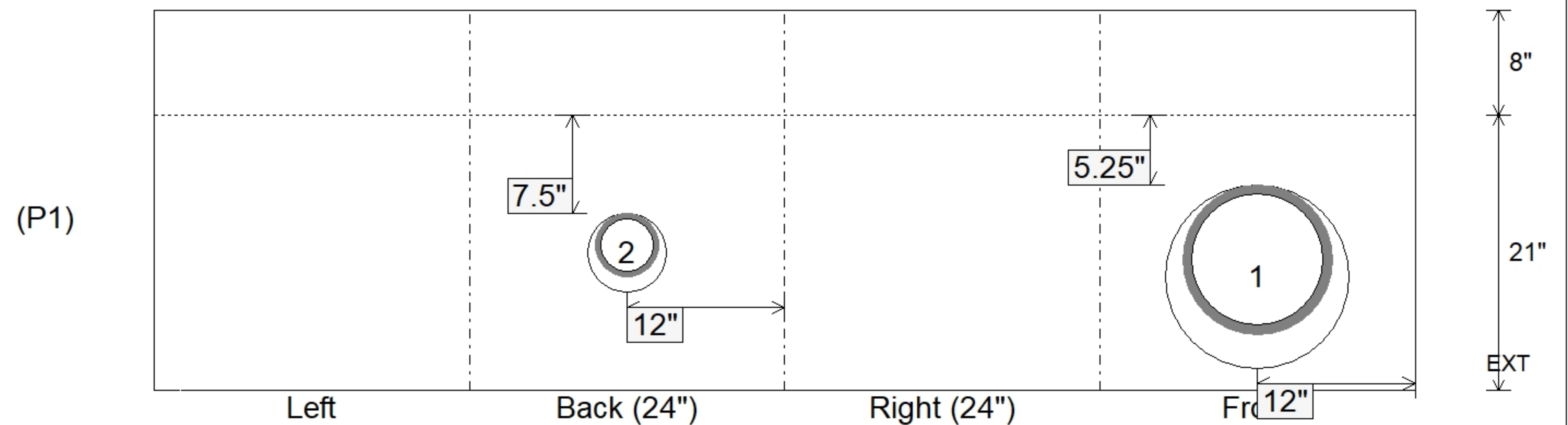
Position	Elev	Angle	Ext. (cw)	Pipe	Pipe OD	Connector	Hole	Horz Size	Up ()	Offset
Invert 1	441.61'	0°	20"	10" HDPE	11.4"	Hole 14	14"	14"	5.25"	0"
Invert 2	441.77'	180°	20"	4" HDPE	4.8"	Hole 6	6"	6"	7.5"	0"
Invert 3										
Invert 4										
Invert 5										
Invert 6										
Invert 7										
Invert 8										

RIGHT-SIDE UP VIEW (int. dimensions)

UPSIDE-DOWN VIEW (int. dimensions)



INSIDE WALL DIMENSIONS



Coating (Int):
 Coating (Ext):

Seam Up: Flat
 Seam Dn: n/a

Wall Thickness: 8"
 Floor Height: 8"

Height (Int): 21"
 Height (Ext): 29"

Weight (Net): 2756 lb
 Volume (Net): 0.7cu.yd