

Job Name: 25-2727 - S English Station Storage  
 Job Location: Louisville, KY  
 Contractor: H&W Landwork

Plant: Beaver Dam, KY

Tech: J. Coppage - F

2/3/2026 6:41:22 PM

PC: T. Lewis



**Structure ID: 6**

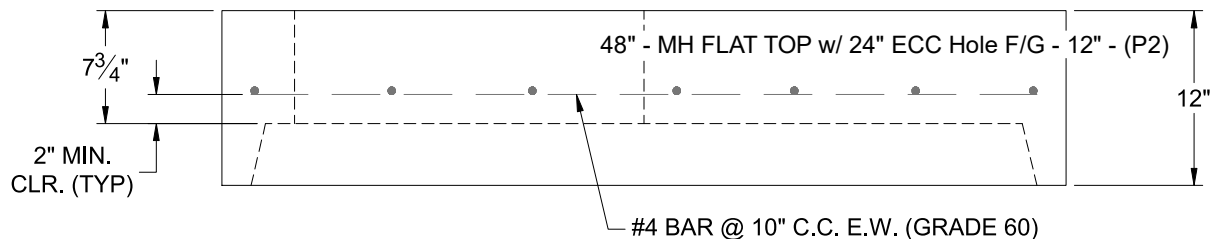
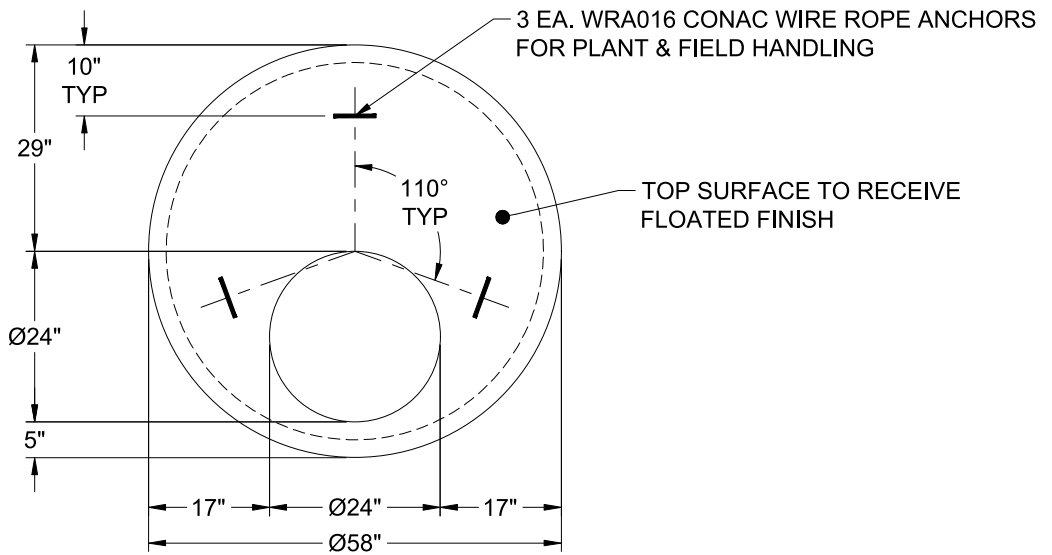
**P2 MH048LD12ECC**

**MH FLAT TOP w/ 24" ECC Hole F/G**

- P3) 24" - CASTING HEIGHT - 7"
- P2) 48" - MH FLAT TOP w/ 24" ECC Hole F/G - 12"
- P1) 48" - MH BASE Custom Ht T/n - 56"
- 1) CASTING - HOE MC-420 F/C Storm LOU-MSD
- 1) 48" - Conseal CS-102 1.00"
- 2) Hole - 24
- 1) Hole - 16
- 5) MH Step ML-10-TDS-NCR - 10"

	0 lb
	1561 lb
	4762 lb
	340 lb
	0 lb
	0 lb
	0 lb
	0 lb
Structure Total:	6663 lb

- Structure Notes:
1. PER ASTM C-478 SPECIFICATIONS
  2. CONCRETE: 4,500 PSI AT 28 DAYS
  3. REINFORCEMENT: #4 BAR @ 10" C.C. E.W. (GRADE 60) - 2" MIN. REBAR CLEARANCE (TYP)
  4. HOE MC-420 FRAME & COVER "STORM LOU-MSD" SUPPLIED BY ICAST
  5. LIFTERS: 3 EA. WRA016 CONAC WIRE ROPE ANCHORS FOR PLANT & FIELD HANDLING
  6. TOP SURFACE TO RECEIVE FLOATED FINISH



Coating (Int): Coating (Ext):	Seam Up: Flat Seam Dn: Groove	Wall Thickness: 5"	Height (Ext): 12"	Weight (Net): 1561 lb Volume (Net): 0.42cu.yd
----------------------------------	----------------------------------	--------------------	-------------------	--