

Job Name: 25-2727 - S English Station Storage  
 Job Location: Louisville, KY  
 Contractor: H&W Landwork

Plant: Beaver Dam, KY

Tech: J. Coppage - F

2/3/2026 6:41:21 PM

PC: T. Lewis



**Structure ID: 15**

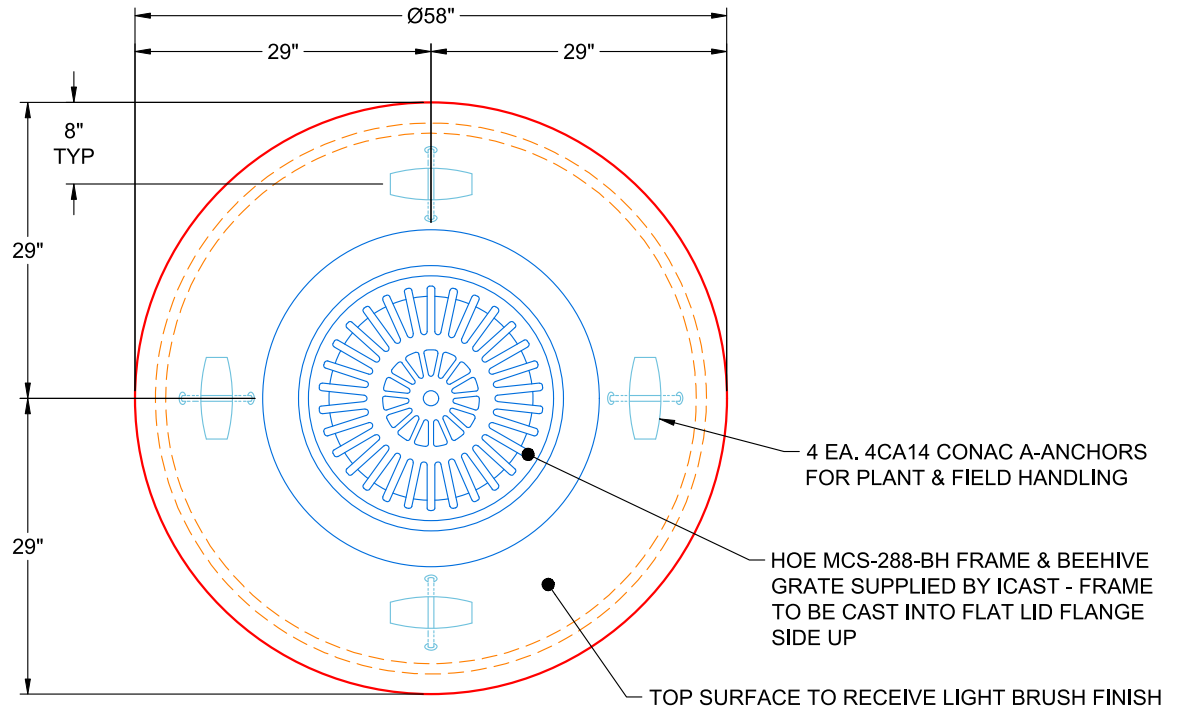
**P2 MH048LD12S**

**MH FLAT TOP SPECIAL F/G**

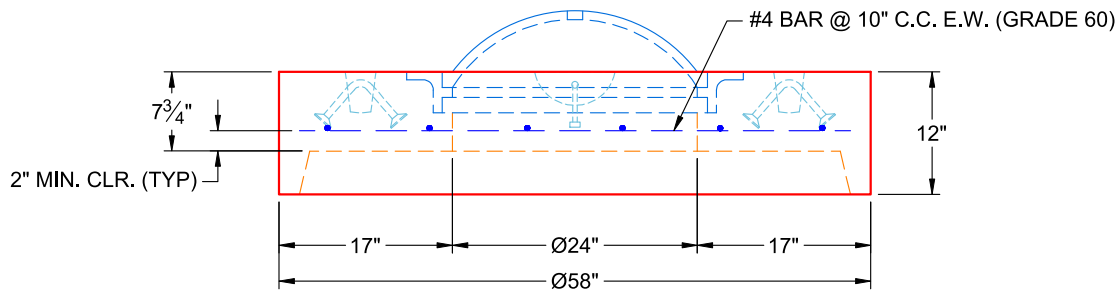
- P3) CASTING HEIGHT - 0"
- P2) 48" - MH FLAT TOP SPECIAL F/G - 12"
- P1) 48" - MH BASE T/n - 54"
- 1) CASTING - HOE MCS-288 BEEHIVE
- 1) This Structure Includes a Cast-in Item - HOE MCS-288 Frame
- 1) CASTING - HOE MCS-288 Frame
- 1) 48" - Conseal CS-102 1.00"
- 1) Hole - 24
- 1) Hole - 18

	0 lb
	2520 lb
	4796 lb
	125 lb
	0 lb
	123 lb
	0 lb
	0 lb
	0 lb
Structure Total:	7564 lb

- Structure Notes:**
1. PER ASTM C-478 SPECIFICATIONS
  2. CONCRETE: 4,500 PSI AT 28 DAYS
  3. REINFORCEMENT: #4 BAR @ 10" C.C. E.W. (GRADE 60) - 2" MIN. REBAR CLEARANCE (TYP)
  4. HOE MCS-288-BH FRAME & BEEHIVE GRATE SUPPLIED BY ICAST - FRAME TO BE CAST INTO FLAT LID FLANGE SIDE UP
  5. LIFTERS: 4 EA. 4CA14 CONAC A-ANCHORS FOR PLANT & FIELD HANDLING
  6. TOP SURFACE TO RECEIVE LIGHT BRUSH FINISH



**PLAN VIEW  
(RIGHT SIDE UP)**



**FRONT VIEW  
(RIGHT SIDE UP)**

Coating (Int):  
 Coating (Ext):

Seam Up: Flat  
 Seam Dn: Groove

Wall Thickness: 5"

Height (Ext): 12"

Weight (Net): 2520 lb  
 Volume (Net): 0.64cu.yd

**Job Number:**

25-2727

**Job Name:**

S English Station Storage

**Structure:**

15

**Note:**

HOE MCS-288-BH Frame Supplied  
By iCast To Be Cast Into Flat Lid  
Flange Side Up