

Job Name: 25-2727 - S English Station Storage
 Job Location: Louisville, KY
 Contractor: H&W Landwork

Plant: Beaver Dam, KY
 2/3/2026 6:40:42 PM

Tech: J. Coppage - F
 PC: T. Lewis



Structure ID: 15

P1 MH048BA54

MH BASE T/n

- P3) CASTING HEIGHT - 0"
- P2) 48" - MH FLAT TOP SPECIAL F/G - 12"
- P1) 48" - MH BASE T/n - 54"
- 1) CASTING - HOE MCS-288 BEEHIVE
- 1) This Structure Includes a Cast-in Item - HOE MCS-288 Frame
- 1) CASTING - HOE MCS-288 Frame
- 1) 48" - Conseal CS-102 1.00"
- 1) Hole - 24
- 1) Hole - 18

0 lb
 2520 lb
 4796 lb
 125 lb
 0 lb
 123 lb
 0 lb
 0 lb
 0 lb

 Structure Total: 7564 lb

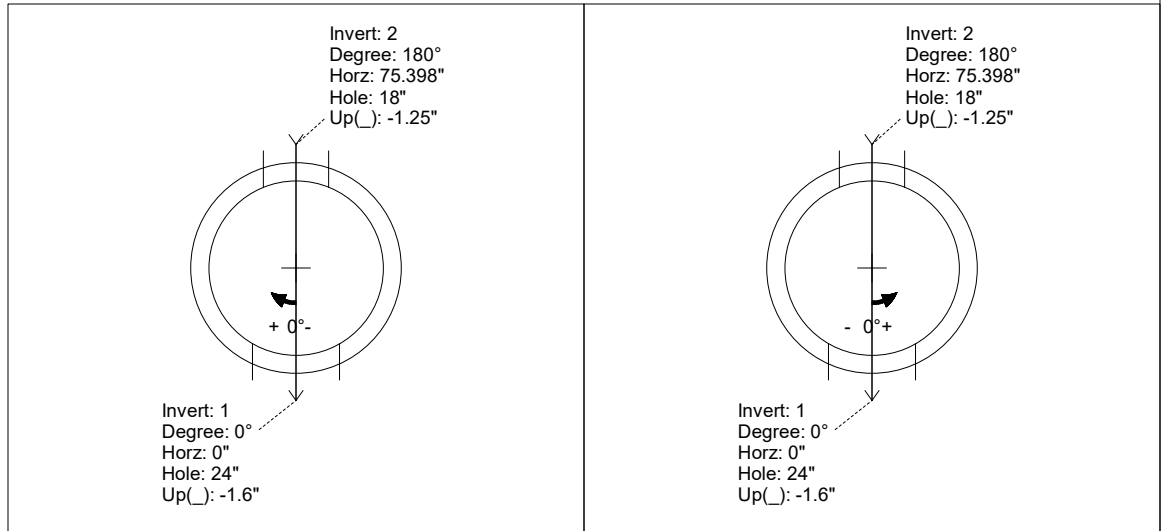
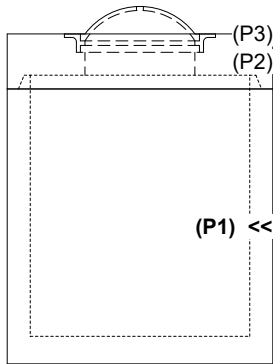
- Structure Notes:**
1. PER ASTM C-478 SPECIFICATIONS
 2. CONCRETE: 4,500 PSI AT 28 DAYS
 3. REINFORCEMENT: PER ASTM A615
 4. NO STORM INVERT
 5. NO STEPS
 6. HOE MCS-288-BH FRAME & BEEHIVE GRATE SUPPLIED BY ICAST - FRAME TO BE CAST INTO FLAT LID FLANGE SIDE UP

Rim: 698.4' Rim to Invert: 5.5' Slack: 0" Sump: 0" Step Position:

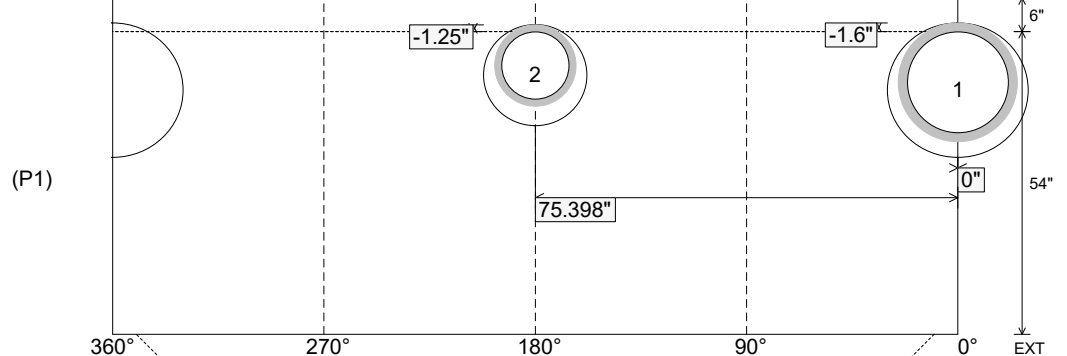
Position	Elev	Angle	Ext. (cw)	Pipe	Pipe OD	Connector	Hole	Horz Size	Up (↓)	Offset
Invert 1	692.9'	0°	0"	18" HDPE	21.2"	Hole 24	24"	25.133"	-1.6"	0"
Invert 2	692.9'	180°	91.106"	12" HDPE	14.5"	Hole 18	18"	18.451"	-1.25"	0"
Invert 3										
Invert 4										
Invert 5										
Invert 6										
Invert 7										
Invert 8										

RIGHT-SIDE UP VIEW (int. dimensions)

UPSIDE-DOWN VIEW (int. dimensions)



INSIDE WALL DIMENSIONS



Coating (Int):
 Coating (Ext):

Seam Up: Tongue
 Seam Dn: n/a

Wall Thickness: 5"
 Floor Height: 6"

Height (Int): 54"
 Height (Ext): 60"

Weight (Net): 4796 lb
 Volume (Net): 1.23cu.yd