

**Job Name: 25-2686 - Whispering Oaks Subdivision**  
**Job Location: Jeffersonville, IN**  
**Contractor: Cornell Harbison Excavating**

PC: J. Jarvis  
 TECH: J. Horsley - F  
 Plant: 100



Structure ID: 3  
 Spec: INDOT  
 Type: INLET TYPE J  
 Size: 24" x 36"

Rim: 501.16'  
 Invert: 496.97'  
 Rim to Invert: 4.19'

Sump: 0"  
 Floor (Top): 496.97'  
 Floor Height: 8"

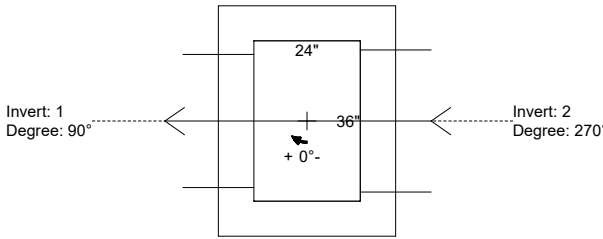
Floor (Bot): 496.303'  
 Overall Height: 4.823'  
 Slack: 0.406"

- Structure Notes:**
1. PER INDOT INLET TYPE J / ASTM C-913 SPECIFICATIONS
  2. CONCRETE: 4,000 PSI AT 28 DAYS
  3. REINFORCEMENT: #5 BAR @ 12" C.C. E.W. (GRADE 60)
  4. NO STORM INVERT
  5. NO STEPS
  6. EJ 7505 FRAME, GRATE, & CURB HOOD SUPPLIED BY OTHERS

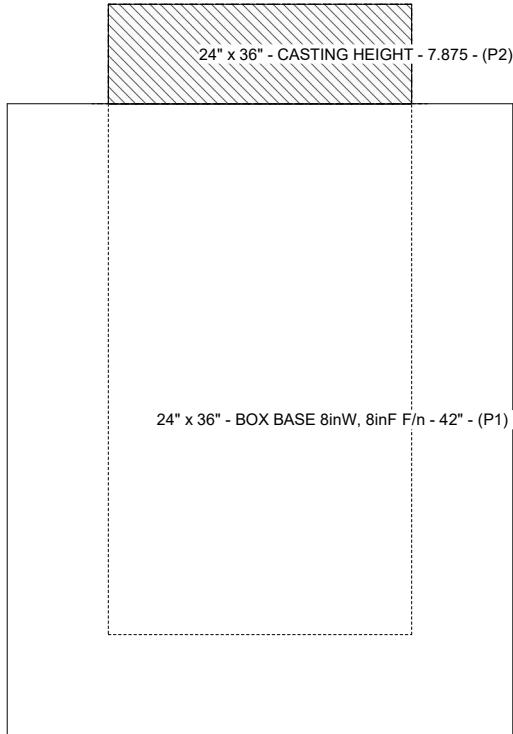
**STRUCTURE SUMMARY:**

P2) 24" x 36" - CASTING HEIGHT - 7.875  
 P1) 24" x 36" - BOX BASE 8inW, 8inF F/n - 42"  
 1) 24" x 36" - Conseal CS-102 1.00"  
 1) Hole - 30  
 1) Hole - 32

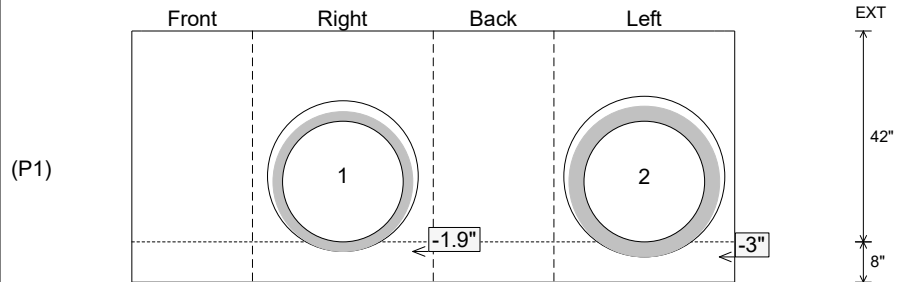
0 lb  
 4667 lb  
 0 lb  
 0 lb  
 0 lb  
 \_\_\_\_\_  
 Structure Total: 4667 lb



Position	Elev	Angle	Pipe	Pipe OD	Hole	Connector	Up (")	Ref
Rim	501.16'							
Reducer								
Invert 1	496.97'	90°	24" HDPE	27.8"	30"	Hole 30	-1.9"	P1
Invert 2	496.97'	270°	24" RCP B WALL	30"	32"	Hole 32	-3"	P1
Invert 3								
Invert 4								
Invert 5								
Invert 6								
Invert 7								
Invert 8								



**Cast (Int. Dim.) - Interior Dimensions**



Submittal Drawing  
 2/6/2026 9:34:43 AM

SUBMITTAL  
 APPROVED BY: