

Job Name: 25-2666 Residential Subdivision
 Job Location: Hawesville, Ky
 Contractor: Winwater Hartford KY Co.

Plant: 100

12/15/2025 8:26:08 AM

Tech: C.Russ

PC: A.Chambers



Structure ID: SSMH A2

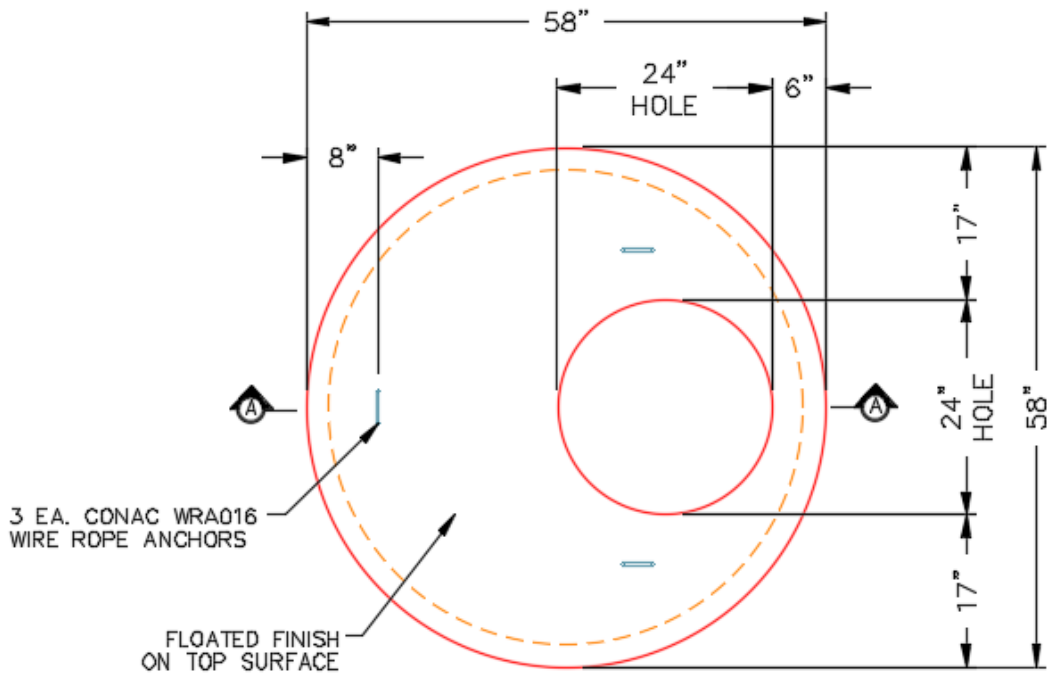
P2 MH048LD12ECC

MH FLAT TOP w/ 24" ECC Hole F/G

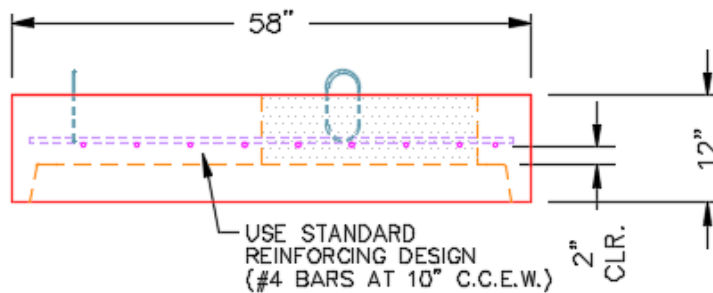
- P3) 24" - CASTING HEIGHT - 7"
- P2) 48" - MH FLAT TOP w/ 24" ECC Hole F/G - 12"
- P1) 48" - MH BASE T/n - 30"
- 1) CASTING - HOE MC-315 F/C Sanitary
- 1) 48" - DBL 1"x14.5' Butyl (2x)
- 2) PSX - 12-08 NYLO
- 1) PSX - 8QRS-S NYLO
- 2) MH Step ML-10-TDS-NCR - 10"

	0 lb
	1561 lb
	3309 lb
	258 lb
	0 lb
	16 lb
	6 lb
	0 lb
Structure Total:	5151 lb

- Structure Notes:**
1. PER ASTM C478 SPECIFICATIONS.
 2. CONCRETE = 4,000 PSI AT 28 DAYS.
 3. REINFORCING PER ASTM A615 (GRADE 60).
 - CONE (As .12)
 - RISER/WALLS (As .12)
 - FLOOR (As .31) #5 BARS AT 12" C.C.E.W.
 4. HOE MC-315 SANITARY CASTING PROVIDED BY ICAST.
 5. VERIFY SERVICE LINE PIPE SIZE. ASSUMED 6" SDR35.



PLAN VIEW



SECTION A-A

Coating (Int):
 Coating (Ext):

Seam Up: Flat
 Seam Dn: Groove

Wall Thickness: 5"

Height (Ext): 12"

Weight (Net): 1561 lb
 Volume (Net): 0.42cu.yd