

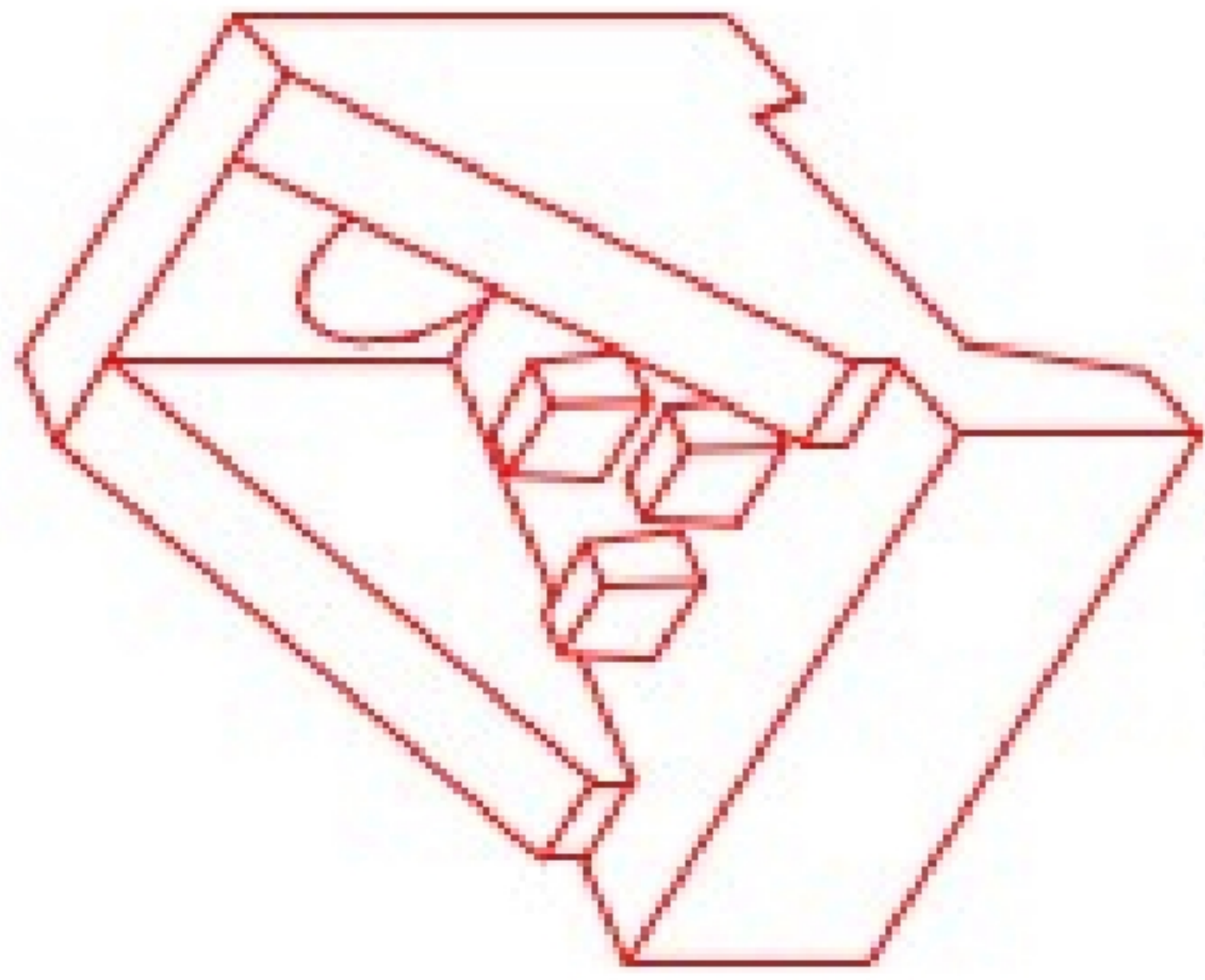


Structure ID: HW AA1

P1 HWSF24D

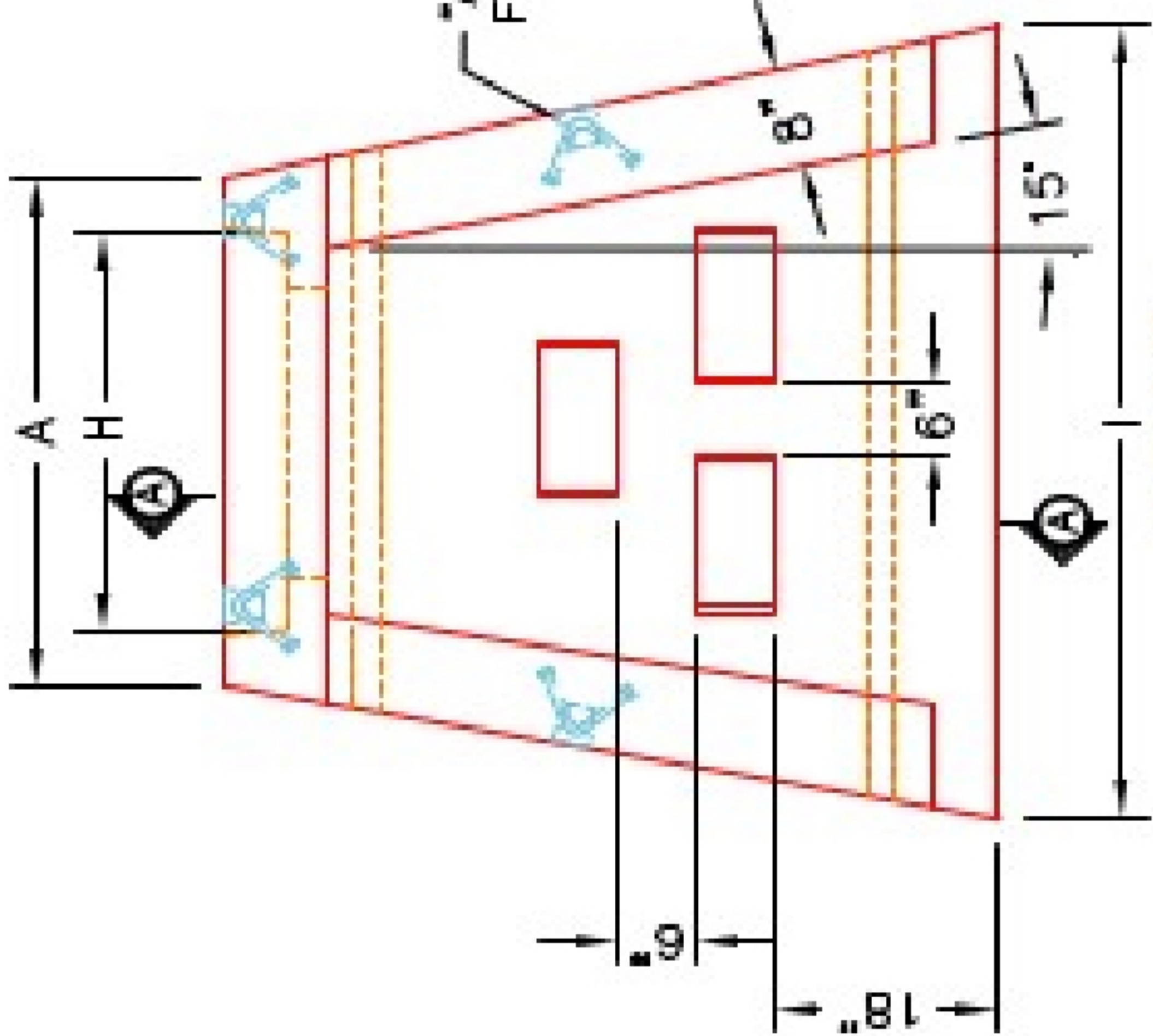
24" - SLOPED & FLARED HEADWALL W/DISS F/F

DIMENSIONS											
PIPE Ø	A	B	C	D	E	F	G	H	I	WEIGHT	DISSIPATORS
24"	3'-8"	4'-4"	2'-10"	1'-6"	5'-0"	4"	3'±	2'-10"	6'-0"	5,127 LBS.	3 EA.



ISOMETRIC VIEW
24" HEADWALL

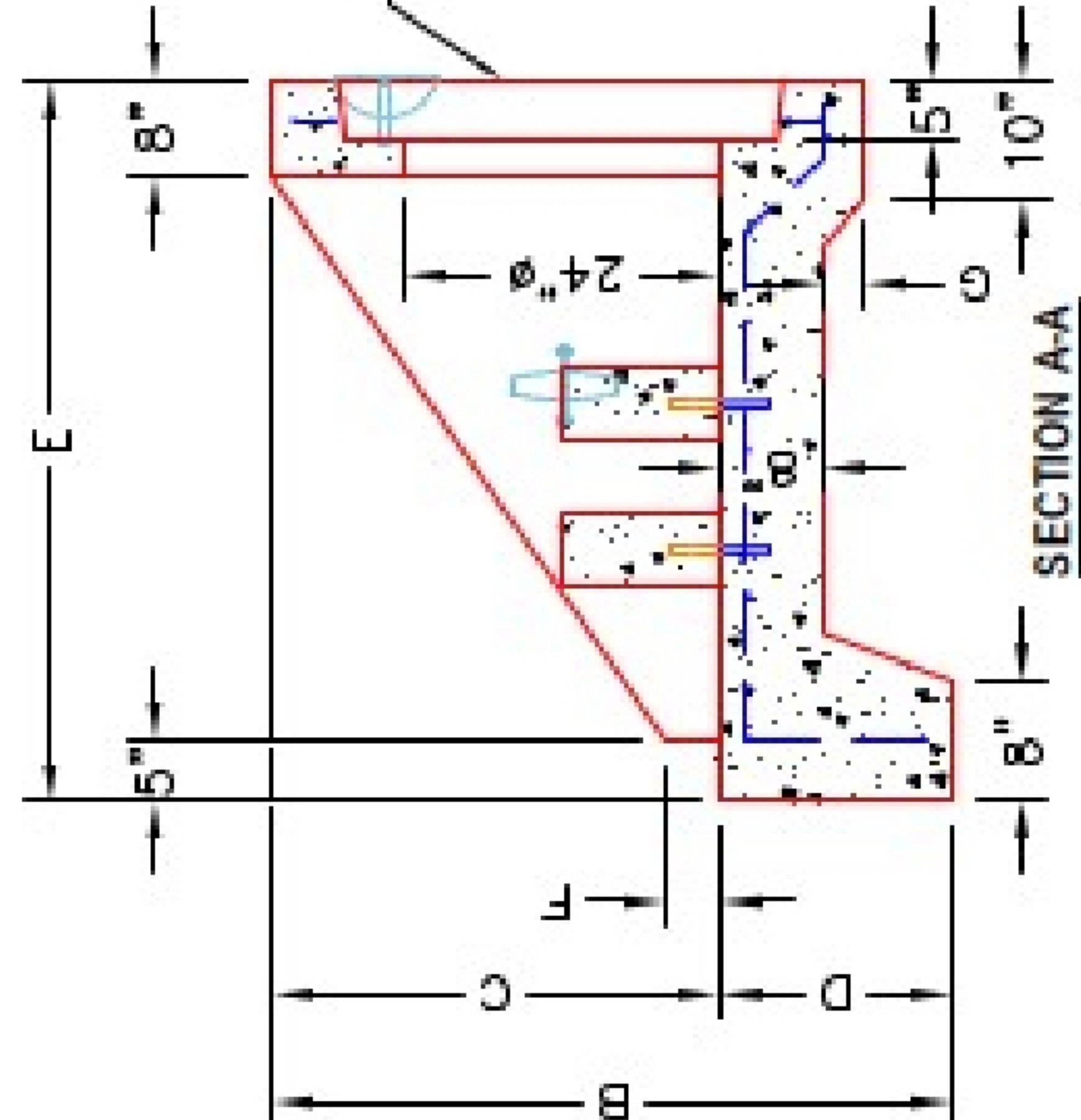
"A-ANCHOR" LIFTING SYSTEM FOR PLANT & FIELD HANDLING.



PLAN VIEW

12"x12"x6" ENERGY DISSIPATOR BLOCKS (3 EA.).

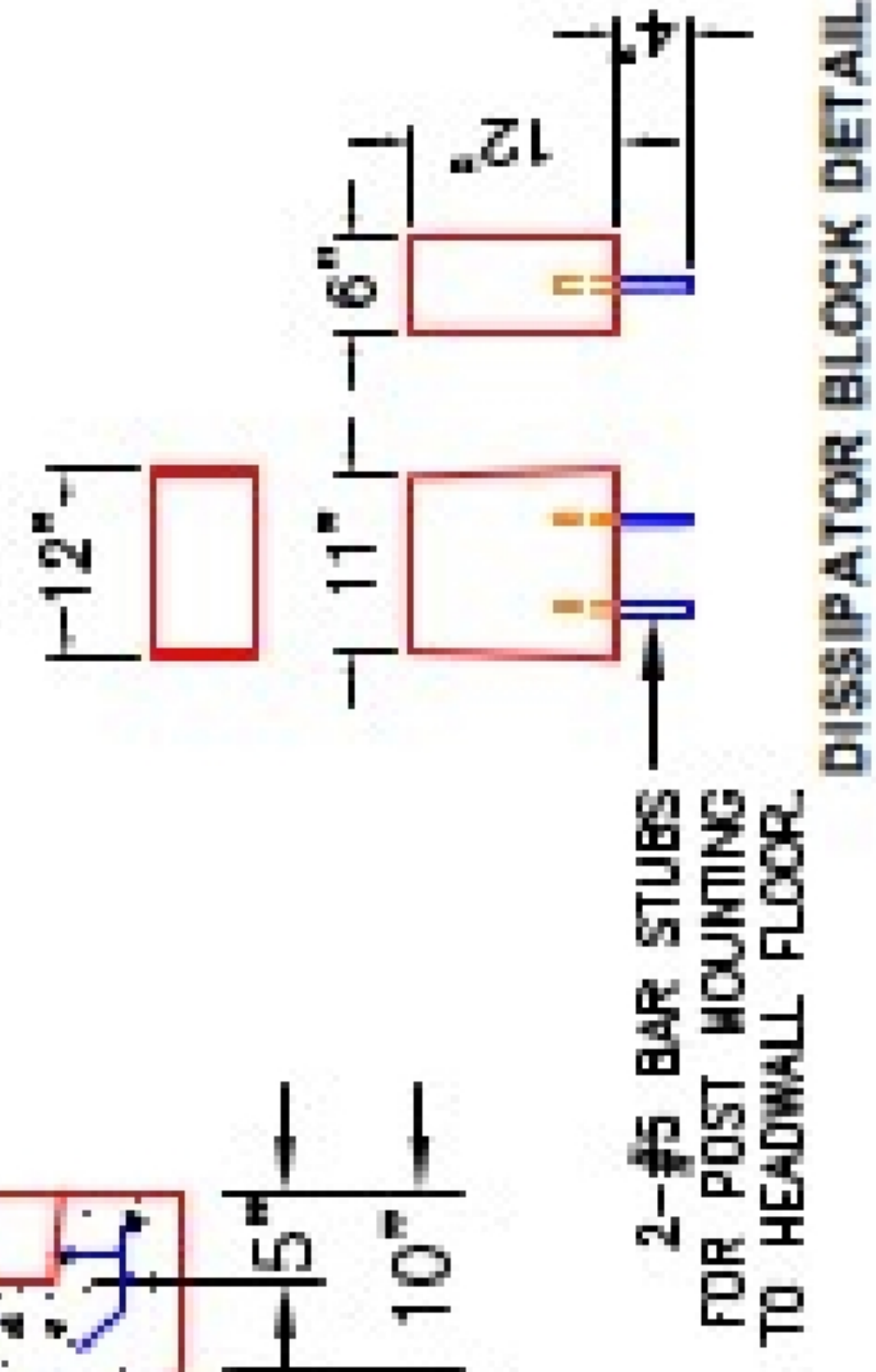
24"Ø TO 34"Ø STEPPED HOLE FORMER FOR 24"Ø PIPE. 24"Ø TO BE FLUSH WITH FLOOR.



SECTION A-A

FRONT ELEVATION

- NOTES:
1. CONCRETE: 4500 PSI @ 28 DAYS.
 2. REINFORCING: #4 BAR @ 12" C/C E.W.-GRADE 60. (WITH 2" CONCRETE COVER MINIMUM)
 3. REINFORCING BARS TO BE TACK WELDED OR TIED.
 4. DRAWING TO BE USED IN CONJUNCTION WITH KYTC STD. DRAWING RDH-020-03 AND THE STANDARD SPECIFICATIONS FOR ROAD AND BRIDGE CONSTRUCTION.
 5. CHAMFER ON ALL EXPOSED EDGES.



DISSIPATOR BLOCK DETAIL

2-#5 BAR STUBS FOR POST MOUNTING TO HEADWALL FLOOR.

PRODUCTION WORK ORDER	
PRODUCT I.D.: HWSF24D	DESCRIPTION: KYTC 24"Ø SLOPED & FLARED HEADWALL W/DISSIPATORS
PRODUCT VIEW: RIGHT SIDE UP	CUSTOMER: STDCO
PLANT: BEAVER DAM, KY.	PROJECT: STOCK INVENTORY
WEIGHT: 5,127 LBS.	STRUCTURE ID.: N/A
TOP SECTION JOINT: N/A	QUOTE/SALES ORDER NO: N/A
BASE SECTION JOINT: N/A	CHECK: J.H. ROSS, PE DRAWING: N. RICHARDS
QC CHECK INITIALS:	DATE: 09/08/22 SCALE: NTS PG. 1 of 1

QUALITY CONTROL CHECKLIST	
<input type="checkbox"/>	ALL DIMENSIONS CORRECT.
<input type="checkbox"/>	LIFTERS INSTALLED.
<input type="checkbox"/>	STEPPED HF CORRECT SIZE.
<input type="checkbox"/>	REINFORCING CORRECT.
<input type="checkbox"/>	DISSIPATOR BLOCK INSTALLED.
<input type="checkbox"/>	EDGES CHAMFERED.
<input type="checkbox"/>	ALL PATCHWORK ACCEPTABLE.

