

Job Name: 25-2666 Residential Subdivision	Plant: 100	Tech: C.Russ	
Job Location: Hawesville, Ky Contractor: Winwater Hartford KY Co.	12/15/2025 8:25:05 AM	PC: A.Chambers	

**Structure ID: CBI BA2**

**P1 BX2436-08BVF**

**BOX BASE 8inW, 8inF, Variable Ht F/n**

P2) 24" x 36" - CASTING HEIGHT - 6"	0 lb
P1) 24" x 36" - BOX BASE 8inW, 8inF, Variable Ht F/n - 26"	3690 lb
1) CASTING - HOE 525 LV SET (F/G/H)	442 lb
1) 24" x 36" - SGL 1"x14.5' Butyl	0 lb
1) Hole - 20	0 lb
1) Hole - 16	0 lb
<b>Structure Total:</b>	<b>4132 lb</b>

**Structure Notes:**

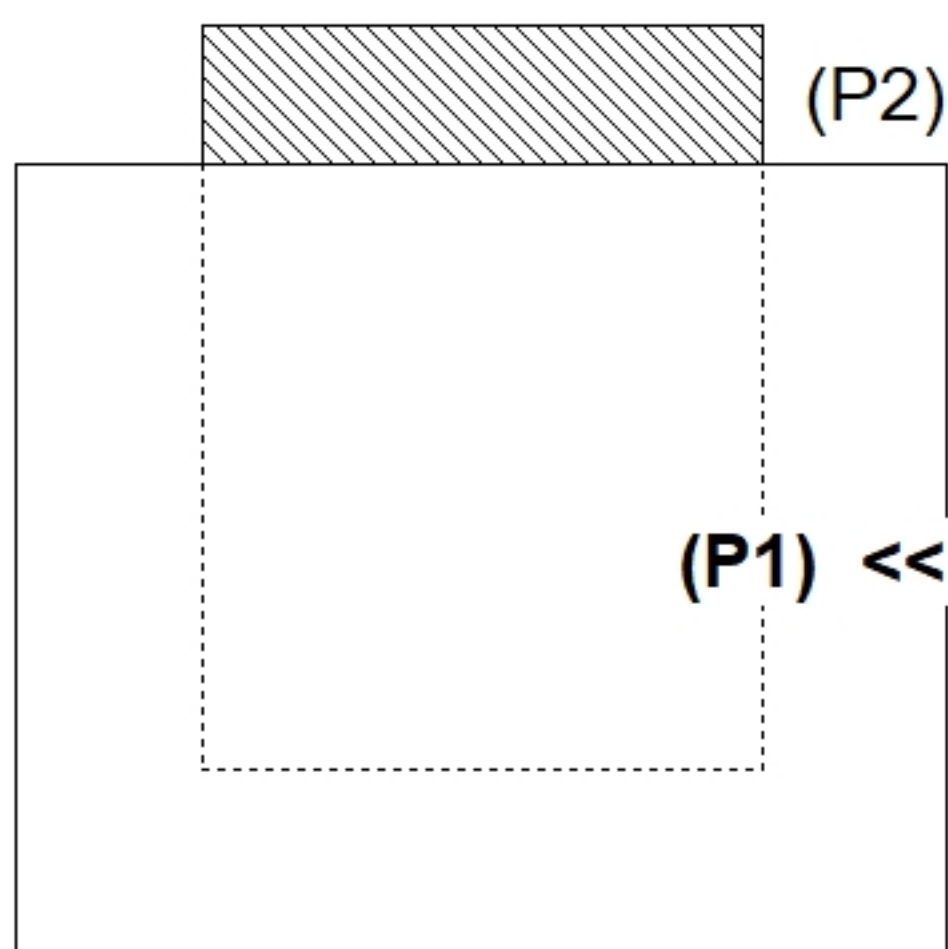
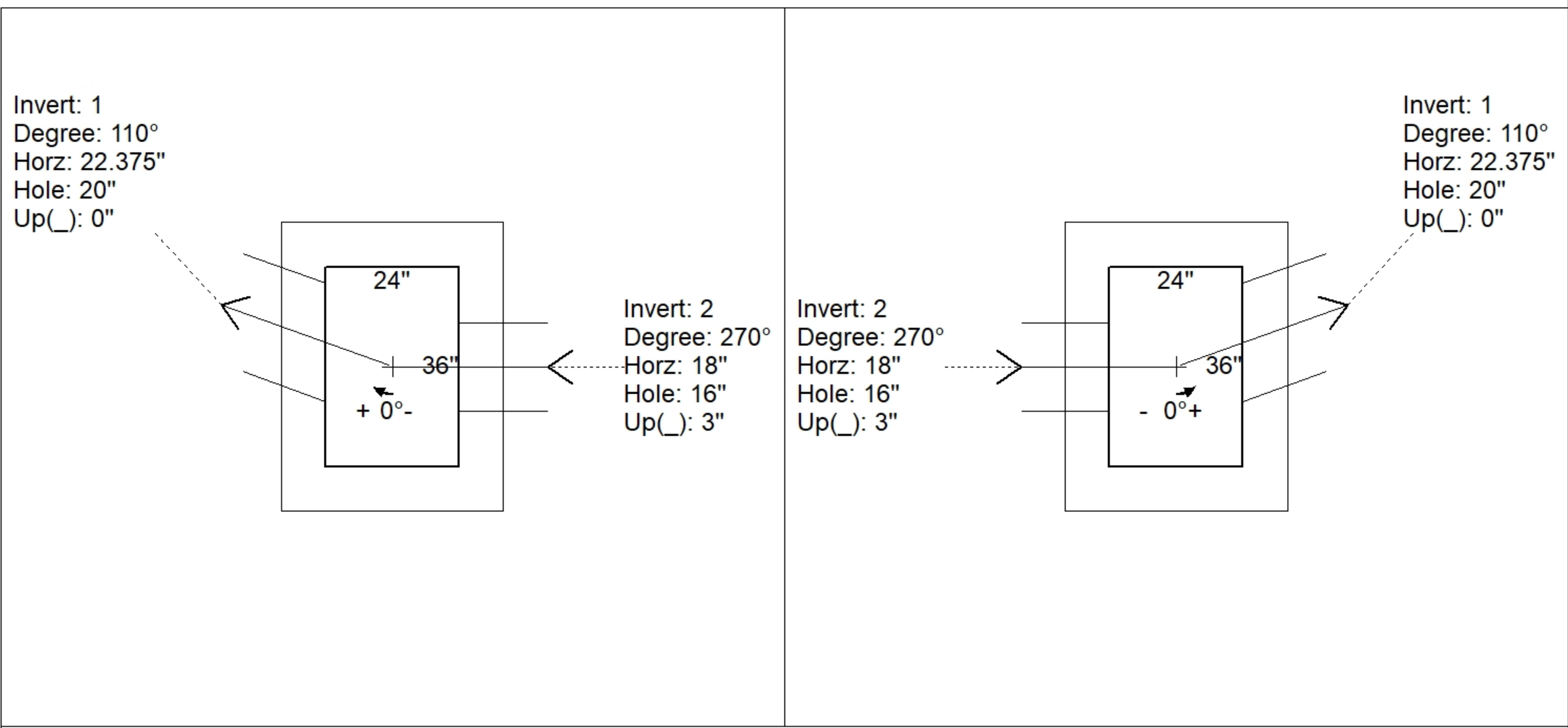
- PER ASTM C913 SPECIFICATIONS.
- CONCRETE = 4,000 PSI AT 28 DAYS.
- NO INVERT CHANNEL.
- REINFORCING PER ASTM A615 (GRADE 60).  
- TOP SLAB (As .62) #5 BARS AT 6" C.C.E.W.  
- WALLS (As .12) #5 BARS AT 12" C.C.E.W.  
- FLOOR (As .12) #5 BARS AT 12" C.C.E.W.
- HOE 525 PROVIDED BY ICAST

Rim: 530.63' Rim to Invert: 2.59' Slack: 0.38" Sump: 1.3" Step Position: 0°

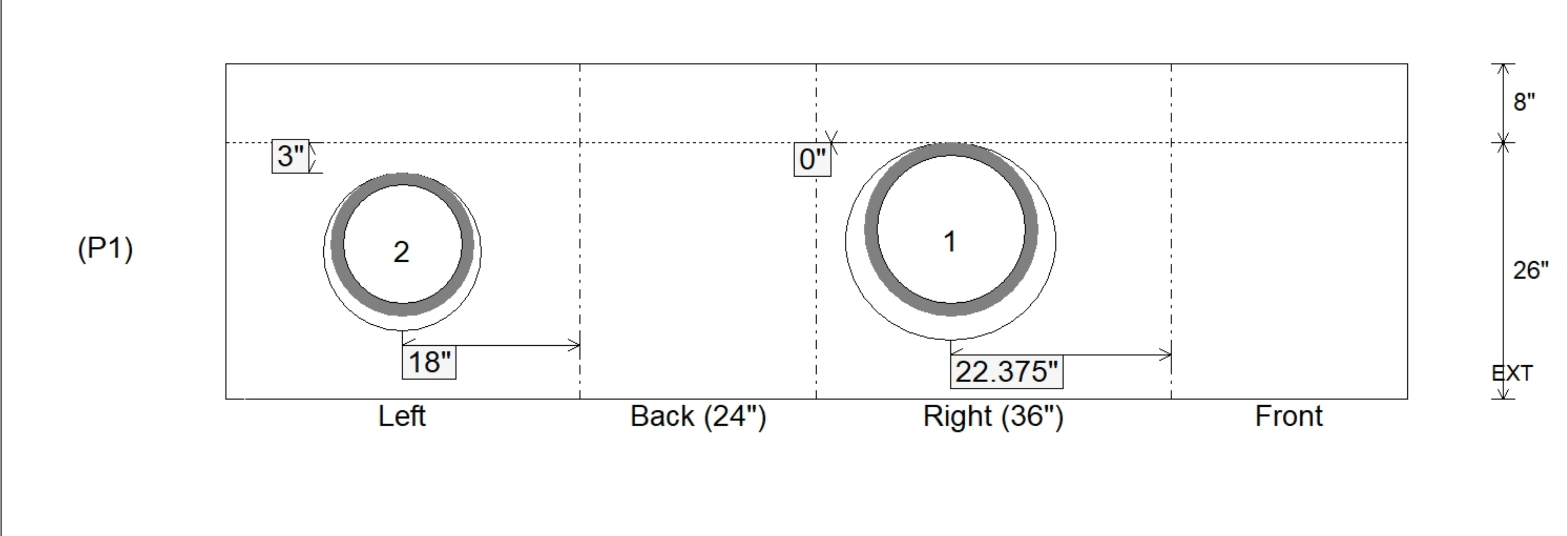
Position	Elev	Angle	Ext. (cw)	Pipe	Pipe OD	Connector	Hole	Horz Size	Up ( )	Offset
Invert 1	528.04'	110°	33.25"	15" HDPE	17.6"	Hole 20	20"	21.284"	0"	0"
Invert 2	528.29'	270°	26"	12" HDPE	14.5"	Hole 16	16"	16"	3"	0"
Invert 3										
Invert 4										
Invert 5										
Invert 6										
Invert 7										
Invert 8										

**RIGHT-SIDE UP VIEW (int. dimensions)**

**UPSIDE-DOWN VIEW (int. dimensions)**



**INSIDE WALL DIMENSIONS**



Coating (Int):	Seam Up: Flat	Wall Thickness: 8"	Height (Int): 26"	Weight (Net): 3690 lb
Coating (Ext):	Seam Dn: n/a	Floor Height: 8"	Height (Ext): 34"	Volume (Net): 0.94cu.yd