

Job Name: 25-2666 Residential Subdivision
 Job Location: Hawesville, Ky
 Contractor: Winwater Hartford KY Co.

Plant: 100

12/15/2025 8:26:07 AM

Tech: C.Russ

PC: A.Chambers



Structure ID: CBI AA3

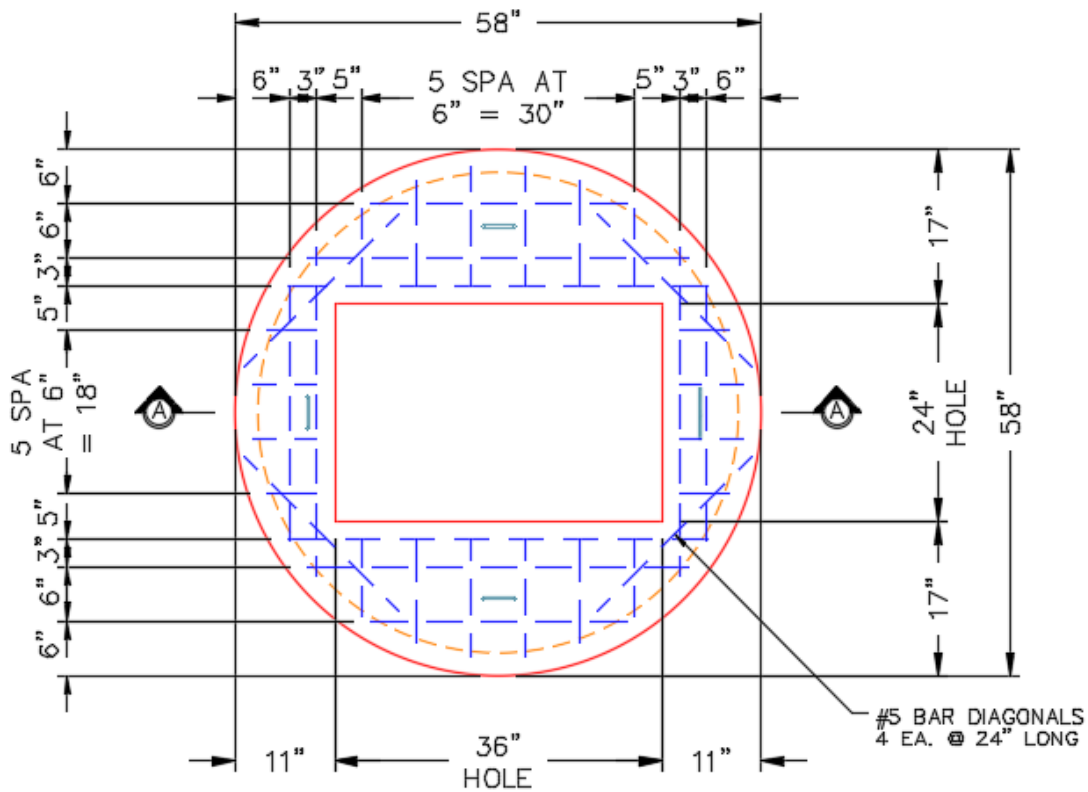
P2 MH048LD12-24X36RECT

MH FLAT TOP w/24"x36" Hole F/G

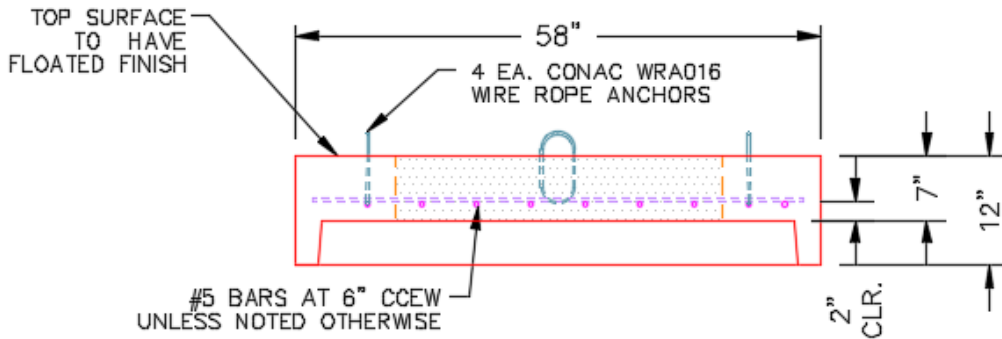
- P3) 24" x 36" - CASTING HEIGHT - 6"
- P2) 48" - MH FLAT TOP w/24"x36" Hole F/G - 12"
- P1) 48" - MH BASE Custom Ht T/n - 42"
- 1) CASTING - HOE 525 LV SET (F/G/H)
- 1) 48" - SGL 1"x14.5' Butyl (2x)
- 2) Hole - 30"
- 3) MH Step ML-10-TDS-NCR - 10"

	0 lb
	1300 lb
	3632 lb
	442 lb
	0 lb
	0 lb
	0 lb
Structure Total:	5374 lb

- Structure Notes:**
1. PER ASTM C478 SPECIFICATIONS.
 2. CONCRETE = 4,000 PSI AT 28 DAYS.
 3. REINFORCING PER ASTM A615 (GRADE 60).
 - TOP SLAB (As .62) #5 BARS AT 6" C.C.E.W..
 - RISER/WALLS (As .12)
 - FLOOR (As .31) #5 BARS AT 12" C.C.E.W.
 4. HOE 525 PROVIDED BY ICAST



PLAN VIEW



SECTION A-A

Coating (Int):
 Coating (Ext):

Seam Up: Flat
 Seam Dn: Groove

Wall Thickness: 5"

Height (Ext): 12"

Weight (Net): 1300 lb
 Volume (Net): 0.46cu.yd