

Job Name: 25-2649B - The Laurel Assisted Living Facility (Sanitary)
Job Location: Bowling Green, KY
Contractor: Infinity Pipeline, Inc.

PC: E. Bradley
 TECH: K. Cardwell
 Plant: Beaver Dam, KY



Structure ID: **MH-9**
 Spec: Sanitary
 Type: SAN.MH
 Size: 48"

Rim: 551.44'
 Invert: 544.33'
 Rim to Invert: 7.11'

Sump: 0.875"
 Floor (Top): 544.257'
 Floor Height: 6"

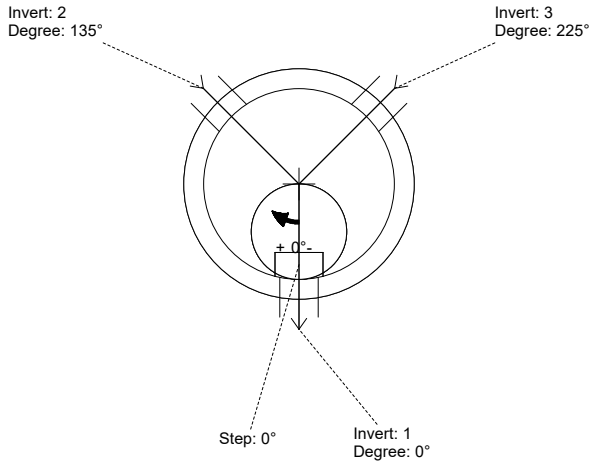
Floor (Bot): 543.757'
 Overall Height: 7.583'
 Slack: 1.195"

Structure Notes:
 STATION: 3+73.94
 1. PER WCWD & ASTM C-478 SPECS
 2. CONCRETE: 4,500 PSI AT 28 DAYS
 3. REINFORCEMENT: PER ASTM A615
 4. INVERT CHANNEL REQUIRED
 5. STEPS AT 0 DEGREES
 6. HOE MC-375 FRAME & COVER "SANITARY" SUPPLIED BY ICAST

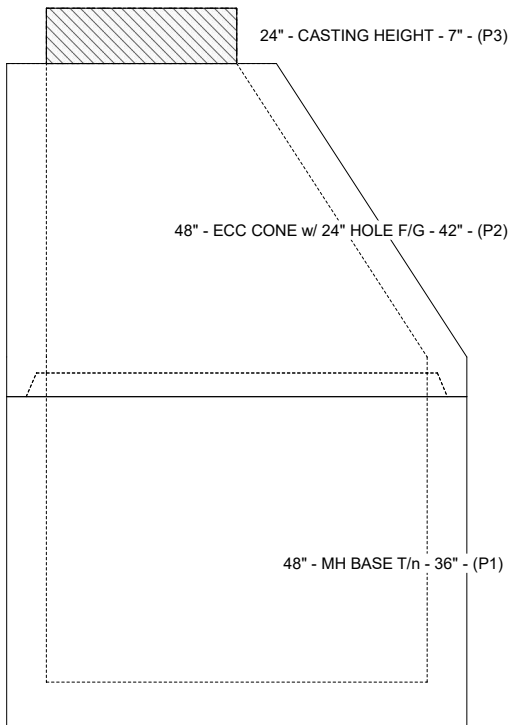
STRUCTURE SUMMARY:

P3) 24" - CASTING HEIGHT - 7" 0 lb
 P2) 48" - ECC CONE w/ 24" HOLE F/G - 42" 3200 lb
 P1) 48" - MH BASE T/n - 36" 3751 lb
 1) JOINT WRAP - 12" WD x 048" MAC WRAP 0 lb
 1) 48" - MH INVERT CHANNEL - FULL HEIGHT 1440 lb
 1) CASTING - HOE MC-375 F/C Sanitary 271 lb
 1) 48" - Conseal CS-102 1.00" (Double) 0 lb
 3) A-Lok - 0285 3 lb
 6) MH Step ML-10-TDS-NCR - 10" 0 lb

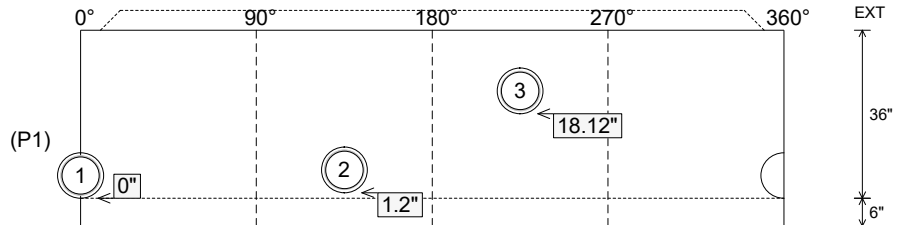
Structure Total: 8665 lb



Position	Elev	Angle	Pipe	Pipe OD	Hole	Connector	Up (")	Ref
Rim	551.44'							
Reducer								
Invert 1	544.33'	0°	8" PVC SDR35	8.5"	9.75"	A-Lok 0285	0"	P1
Invert 2	544.43'	135°	8" PVC SDR35	8.5"	9.75"	A-Lok 0285	1.2"	P1
Invert 3	545.84'	225°	8" PVC SDR35	8.5"	9.75"	A-Lok 0285	18.12"	P1
Invert 4								
Invert 5								
Invert 6								
Invert 7								
Invert 8								



Cast (Int. Dim.) - Interior Dimensions



Submittal Drawing
 1/21/2026 10:55:38 AM

SUBMITTAL
 APPROVED BY: