

Job Name: 25-2649B - The Laurel Assisted Living Facility (Sanitary)
Job Location: Bowling Green, KY
Contractor: Infinity Pipeline, Inc.

PC: E. Bradley
 TECH: K. Cardwell
 Plant: Beaver Dam, KY



Structure ID: **MH-10**
 Spec: Sanitary
 Type: SAN.MH
 Size: 48"

Rim: 551.14'
 Invert: 545.66'
 Rim to Invert: 5.48'

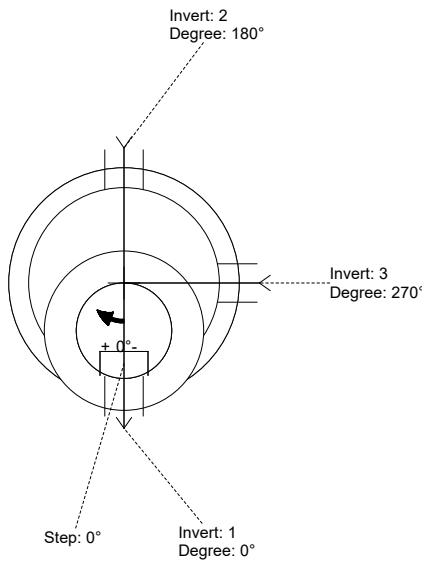
Sump: 0.875"
 Floor (Top): 545.587'
 Floor Height: 6"

Floor (Bot): 545.087'
 Overall Height: 5.917'
 Slack: 1.635"

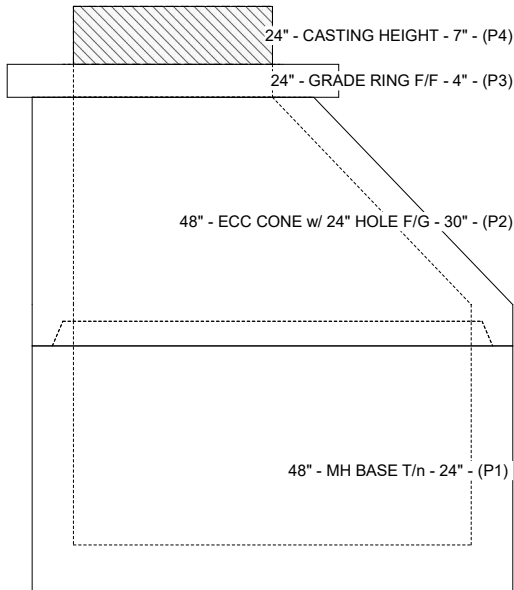
- Structure Notes:**
 STATION: 6+19.32
 1. PER WCWD & ASTM C-478 SPECS
 2. CONCRETE: 4,500 PSI AT 28 DAYS
 3. REINFORCEMENT: PER ASTM A615
 4. INVERT CHANNEL REQUIRED
 5. STEPS AT 0 DEGREES
 6. HOE MC-375 FRAME & COVER "SANITARY" SUPPLIED BY ICAST

STRUCTURE SUMMARY:

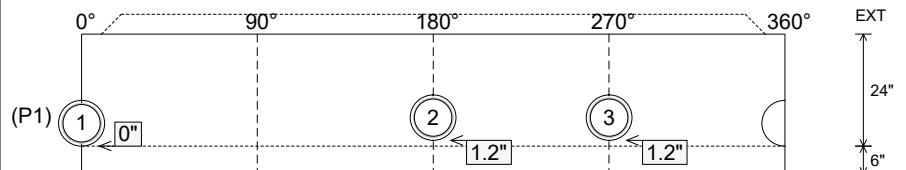
- P4) 24" - CASTING HEIGHT - 7" 0 lb
 - P3) 24" - GRADE RING F/F - 4" 270 lb
 - P2) 48" - ECC CONE w/ 24" HOLE F/G - 30" 2050 lb
 - P1) 48" - MH BASE T/n - 24" 2912 lb
 - 1) 48" - MH INVERT CHANNEL - FULL HEIGHT 1440 lb
 - 1) JOINT WRAP - 12" WD x 048" MAC WRAP 0 lb
 - 1) CASTING - HOE MC-375 F/C Sanitary 271 lb
 - 1) 48" - Conseal CS-102 1.00" (Double) 0 lb
 - 3) A-Lok - 0285 3 lb
 - 4) MH Step ML-10-TDS-NCR - 10" 0 lb
- Structure Total: 6946 lb



Position	Elev	Angle	Pipe	Pipe OD	Hole	Connector	Up (")	Ref
Rim	551.14'							
Reducer								
Invert 1	545.66'	0°	8" PVC SDR35	8.5"	9.75"	A-Lok 0285	0"	P1
Invert 2	545.76'	180°	8" PVC SDR35	8.5"	9.75"	A-Lok 0285	1.2"	P1
Invert 3	545.76'	270°	8" PVC SDR35	8.5"	9.75"	A-Lok 0285	1.2"	P1
Invert 4								
Invert 5								
Invert 6								
Invert 7								
Invert 8								



Cast (Int. Dim.) - Interior Dimensions



Submittal Drawing
 1/21/2026 10:55:39 AM

SUBMITTAL
 APPROVED BY: