

Job Name: 25-2649 - The Laurel Assisted Living Facility  
 Job Location: Bowling Green, KY  
 Contractor: Infinity Pipeline, Inc.

Plant: Beaver Dam, KY  
 11/3/2025 3:19:16 PM

Tech: K. Cardwell  
 PC: E. Bradley



**Structure ID: LS-9**

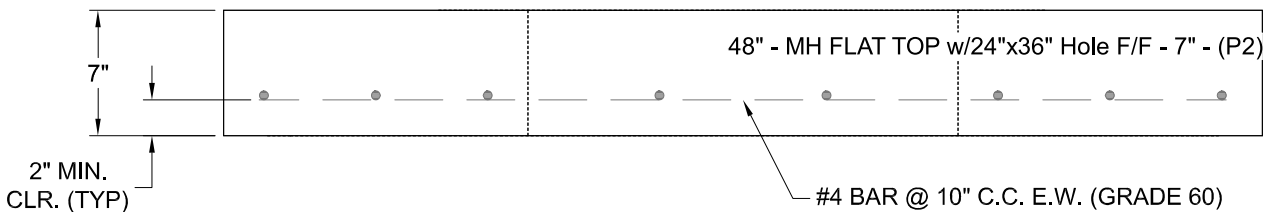
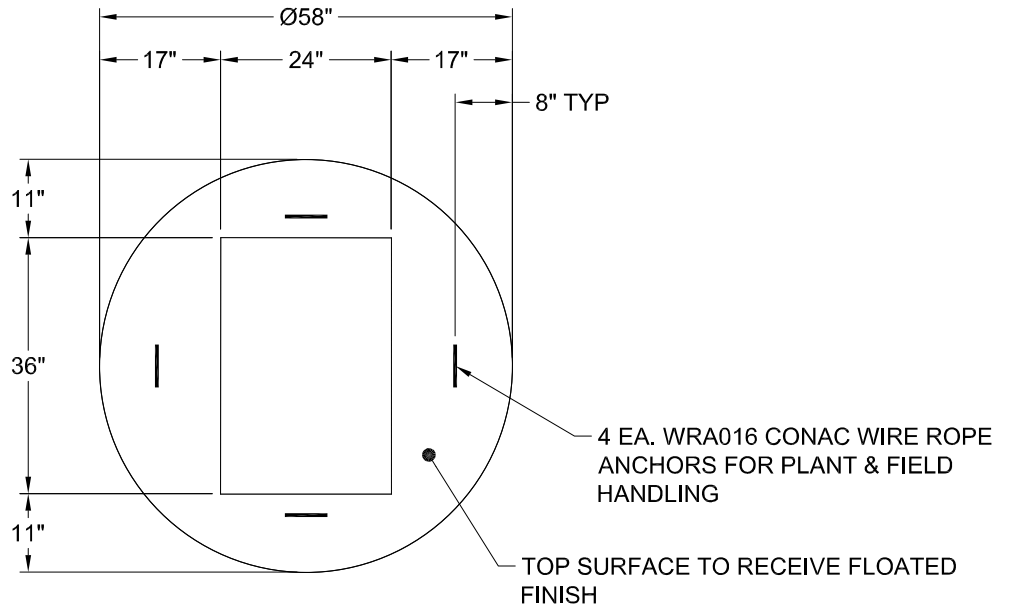
**P2 MH048LD07-24X36RECT**

**MH FLAT TOP w/24"x36" Hole F/F**

- P3) 24" x 36" - CASTING HEIGHT - 6"
- P2) 48" - MH FLAT TOP w/24"x36" Hole F/F - 7"
- P1) 48" - MH BASE Custom Ht F/n - 29"
- 1) CASTING - HOE 470 SET LV (F/G/H)
- 1) 48" - Conseal CS-102 1.00"
- 1) 24" x 36" - Conseal CS-102 1.00"
- 2) Hole - 24"

|                  |         |
|------------------|---------|
|                  | 0 lb    |
|                  | 1044 lb |
|                  | 2962 lb |
|                  | 394 lb  |
|                  | 0 lb    |
|                  | 0 lb    |
|                  | 0 lb    |
| Structure Total: | 4400 lb |

- Structure Notes:**
1. PER ASTM C-478 SPECS
  2. CONCRETE: 4,500 PSI AT 28 DAYS
  3. REINFORCEMENT: #4 BAR @ 10" C.C. E.W. (GRADE 60) - 2" MIN. REBAR CLEARANCE (TYP)
  4. NO STEPS
  5. HOE 470 FRAME, L-VANE GRATE, & CURB HOOD SUPPLIED BY ICAST
  6. LIFTERS: 4 EA. WRA016 CONAC WIRE ROPE ANCHORS FOR PLANT & FIELD HANDLING



|                                  |                                |                    |                  |  |
|----------------------------------|--------------------------------|--------------------|------------------|--|
| Coating (Int):<br>Coating (Ext): | Seam Up: Flat<br>Seam Dn: Flat | Wall Thickness: 5" | Height (Ext): 7" | Weight (Net): 1044 lb<br>Volume (Net): 0.27cu.yd |
|----------------------------------|--------------------------------|--------------------|------------------|--|