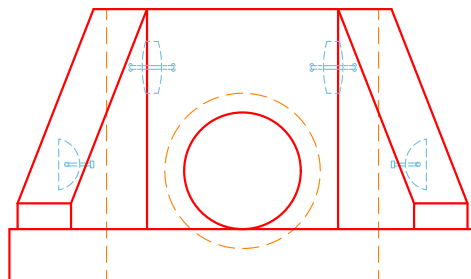
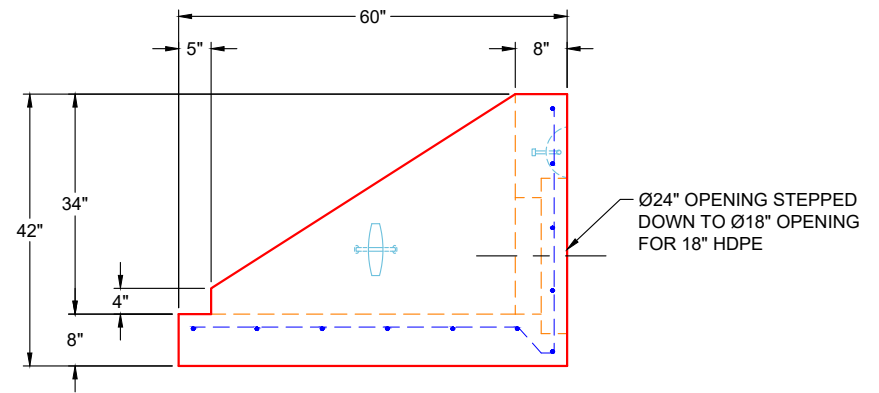


PLAN VIEW



FRONT VIEW



SIDE VIEW

GENERAL NOTES:

1. CONCRETE: 4,500 PSI AT 28 DAYS
2. REINFORCING: #4 BAR @ 12" C.C. E.W. (GRADE 60)
3. PIPE AND LIFTING ANCHOR POCKETS TO BE GROUTED WITH NON-SHRINK GROUT
4. 3/4" CHAMBER ON ALL EXPOSED EDGES
5. WEIGHT: 4,300 LBS

REVISION INFORMATION

| REV. | DATE: | NO REVISIONS TO DATE |
|------|-------|----------------------|
| | | |
| | | |
| | | |
| | | |
| | | |



| | | |
|--|-----------------------|------------|
| SUBMITTAL DRAWING: 18" SF HW FLAT BOTTOM | | |
| CUSTOMER: INFINITY PIPELINE, INC. | | |
| PROJECT: THE LAUREL ASSISTED LIVING FACILITY | | |
| STRUCTURE: LS-39 | | |
| QUOTE/SALES ORDER NO: 25-2649 | | |
| CHECKED BY: B. SMITH | DRAWN BY: K. CARDWELL | |
| DATE: 11/04/25 | SCALE: NTS | PG. 1 OF 1 |