

Job Name: 25-2649 - The Laurel Assisted Living Facility
 Job Location: Bowling Green, KY
 Contractor: Infinity Pipeline, Inc.

Plant: Beaver Dam, KY
 12/4/2025 3:13:34 PM

Tech: K. Cardwell
 PC: E. Bradley



Structure ID: LS-31

P2 BX024024-08LD08S

CB FLAT TOP 8"W w/18"x18" F/G F/F

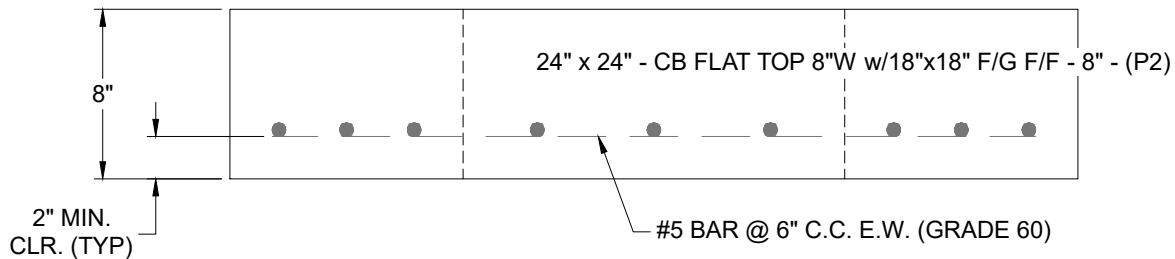
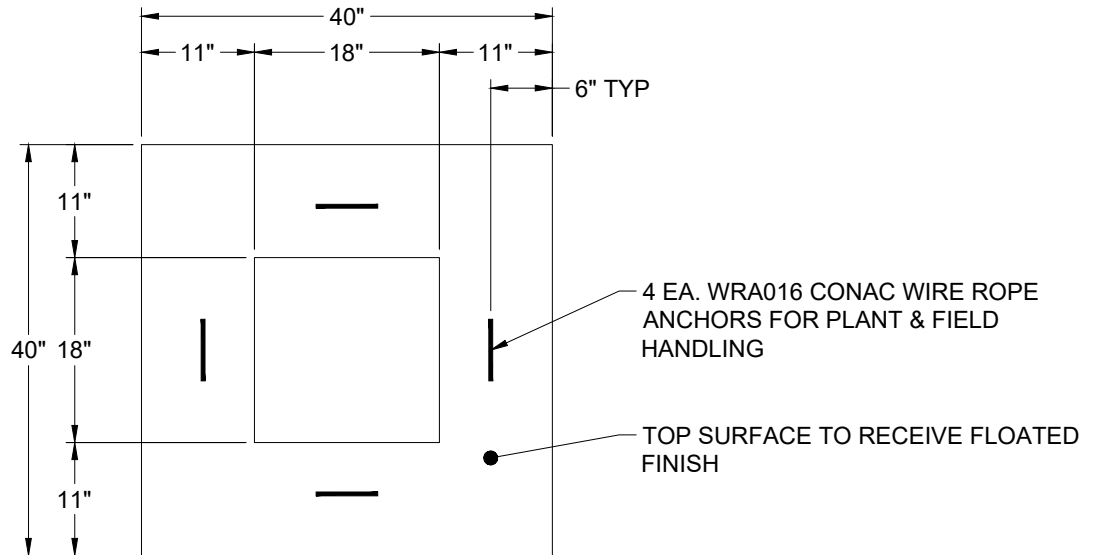
- P3) 18" x 18" - CASTING HEIGHT - 4"
- P2) 24" x 24" - CB FLAT TOP 8"W w/18"x18" F/G F/F - 8"
- P1) 24" x 24" - BOX BASE 8inW, 8inF, Variable Ht F/n - 39"
- 1) CASTING - HOE 165A F/G
- 1) 24" x 24" - Conseal CS-102 1.00"
- 1) 18" x 18" - Conseal CS-102 1.00"
- 2) Hole - 16

0 lb
 857 lb
 4134 lb
 138 lb
 0 lb
 0 lb
 0 lb

 0 lb

Structure Total: 5129 lb

- Structure Notes:**
1. PER ASTM C-913 SPECS
 2. CONCRETE: 4,500 PSI AT 28 DAYS
 3. REINFORCEMENT: #5 BAR @ 6" C.C. E.W. (GRADE 60) - 2" MIN. REBAR CLEARANCE (TYP)
 4. HOE 165-A FRAME & GRATE SUPPLIED BY ICAST
 5. LIFTERS: 4 EA. WRA016 CONAC WIRE ROPE ANCHORS FOR PLANT & FIELD HANDLING



Coating (Int):
 Coating (Ext):

Seam Up: Flat
 Seam Dn: Flat

Wall Thickness: 8"

Height (Ext): 8"

Weight (Net): 857 lb
 Volume (Net): 0.22cu.yd