

Job Name: 25-2649 - The Laurel Assisted Living Facility  
 Job Location: Bowling Green, KY  
 Contractor: Infinity Pipeline, Inc.

Plant: Beaver Dam, KY  
 12/4/2025 3:13:34 PM

Tech: K. Cardwell  
 PC: E. Bradley



**Structure ID: LS-30**

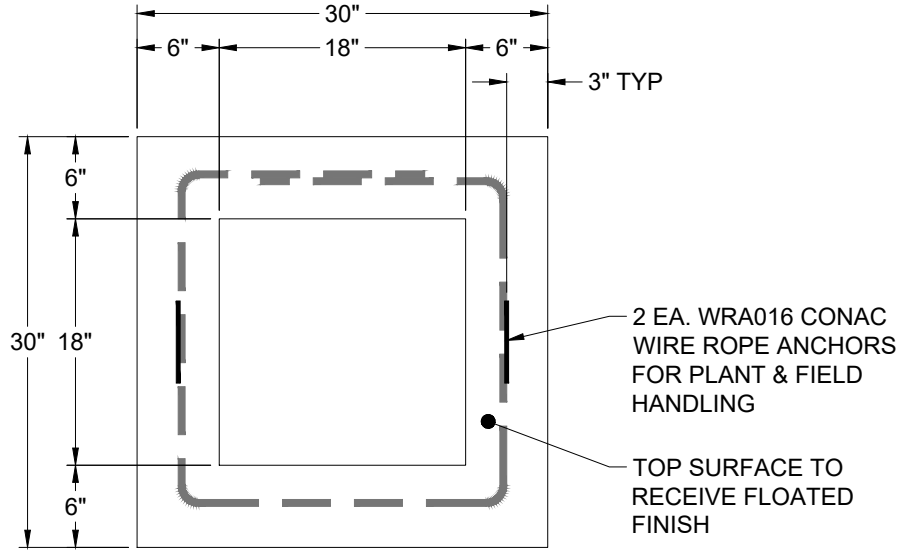
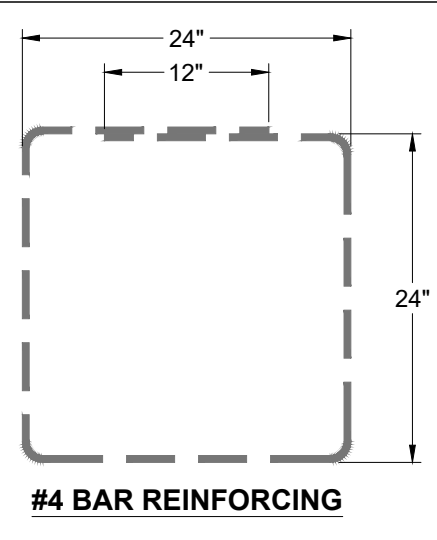
**P2 GR18x18x6x3**

**GRADE RING 6"W F/F**

- P3) 18" x 18" - CASTING HEIGHT - 4"
- P2) 18" x 18" - GRADE RING 6"W F/F - 3"
- P1) 18" x 18" - BOX BASE 6inW, 6inF, Variable Ht F/n - 22"
- 1) CASTING - HOE 165A F/G
- 2) 18" x 18" - Conseal CS-102 1.00"
- 1) Hole - 16

	0 lb
	145 lb
	1415 lb
	138 lb
	0 lb
	0 lb
Structure Total:	1698 lb

- Structure Notes:**
1. PER ASTM C-913 SPECS
  2. CONCRETE: 4,500 PSI AT 28 DAYS
  3. REINFORCEMENT: #4 BAR (GRADE 60) W/ 12" OVERLAP AS SHOWN - 1.5" MIN. REBAR CLEARANCE (TYP)
  4. HOE 165-A FRAME & GRATE SUPPLIED BY ICAST
  5. LIFTERS: 2 EA. WRA016 CONAC WIRE ROPE ANCHORS FOR PLANT & FIELD HANDLING



Coating (Int): Coating (Ext):	Seam Up: Flat Seam Dn: Flat	Wall Thickness: 6"	Height (Ext): 3"	Weight (Net): 145 lb Volume (Net): 0.04cu.yd
----------------------------------	--------------------------------	--------------------	------------------	---