

Job Name: 25-2649 - The Laurel Assisted Living Facility
Job Location: Bowling Green, KY
Contractor: Infinity Pipeline, Inc.

PC: E. Bradley
 TECH: K. Cardwell
 Plant: Beaver Dam, KY



Structure ID: **LS-27**

Spec: Storm
 Type: STM.MH (Recessed pipe)
 Size: 48"

Rim: 550.97'
 Invert: 546.27'
 Rim to Invert: 4.7'

Sump: 0"
 Floor (Top): 546.27'
 Floor Height: 6"

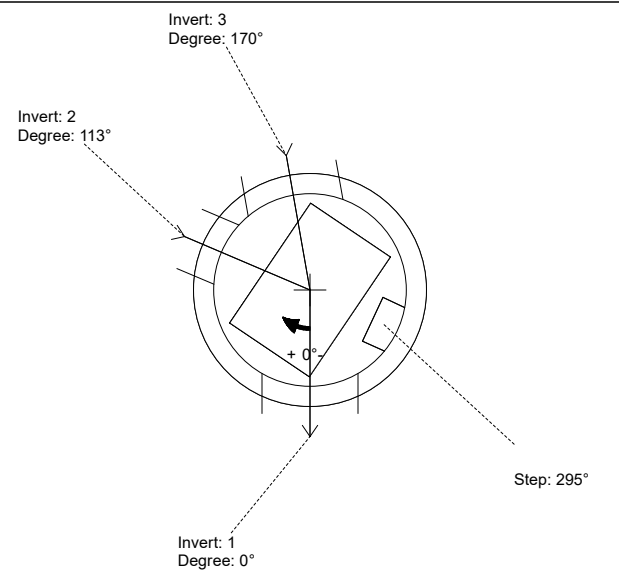
Floor (Bot): 545.77'
 Overall Height: 5'
 Slack: 2.4"

Structure Notes:

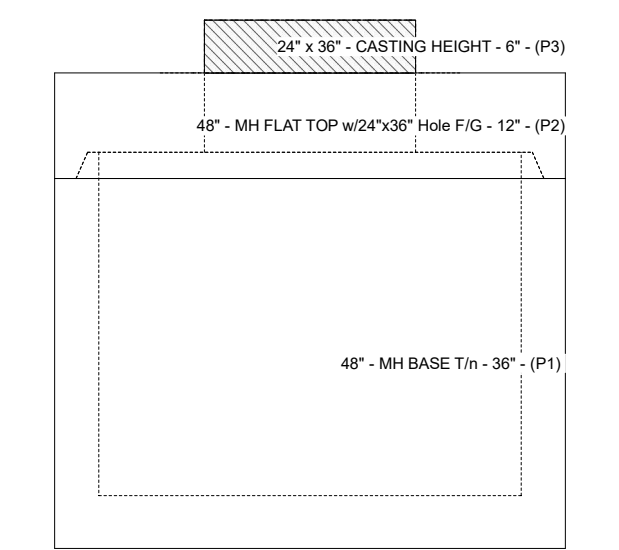
- PER ASTM C-478 SPECS
- CONCRETE: 4,500 PSI AT 28 DAYS
- REINFORCEMENT:
 - FLAT LID: #4 BAR @ 10" C.C. E.W. (GRADE 60)
 - BASE: PER ASTM A615
- STEPS AT 295 DEGREES
- HOE 470 FRAME, L-VANE GRATE, & CURB HOOD SUPPLIED BY ICAST

STRUCTURE SUMMARY:

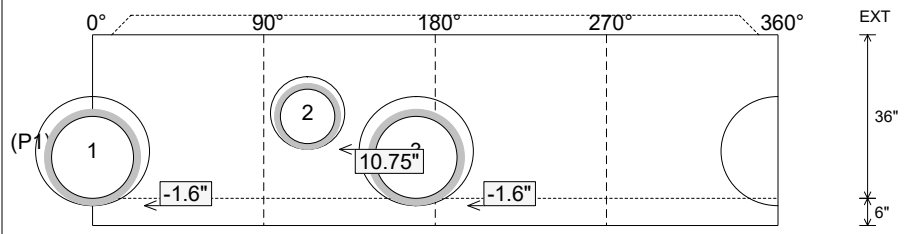
- P3) 24" x 36" - CASTING HEIGHT - 6" 0 lb
- P2) 48" - MH FLAT TOP w/24"x36" Hole F/G - 12" 1300 lb
- P1) 48" - MH BASE T/n - 36" 3365 lb
- 1) CASTING - HOE 470 SET LV (F/G/H) 394 lb
- 1) 48" - Conseal CS-202 1.00" 0 lb
- 1) 24" x 36" - Conseal CS-102 1.00" 0 lb
- 2) Hole - 24 0 lb
- 1) Hole - 16 0 lb
- 3) MH Step ML-10-TDS-NCR - 10" 0 lb
- Structure Total: 5059 lb**



Position	Elev	Angle	Pipe	Pipe OD	Hole	Connector	Up (L)	Ref
Rim	550.97'							
Reducer								
Invert 1	546.27'	0°	18" HDPE	21.2"	24"	Hole 24	-1.6"	P1
Invert 2	547.27'	113°	12" HDPE	14.5"	16"	Hole 16	10.75"	P1
Invert 3	546.27'	170°	18" HDPE	21.2"	24"	Hole 24	-1.6"	P1
Invert 4								
Invert 5								
Invert 6								
Invert 7								
Invert 8								



Cast (Int. Dim.) - Interior Dimensions



Submittal Drawing
 10/24/2025 6:36:08 AM

SUBMITTAL
 APPROVED BY: