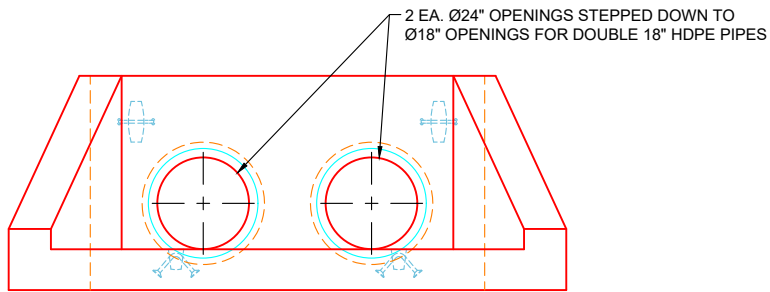
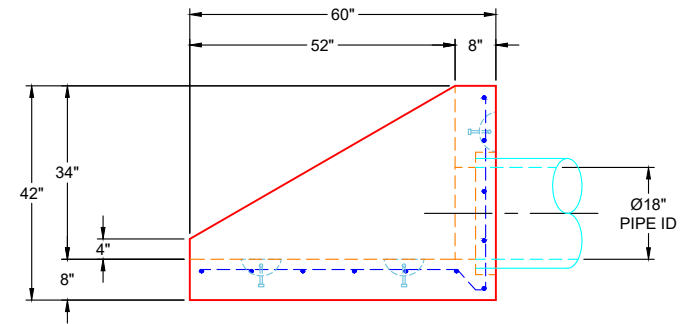


PLAN VIEW



FRONT VIEW



SIDE VIEW

GENERAL NOTES:

1. MANUFACTURED PER ASTM C-913 (LATEST REVISION) SPECIFICATIONS
2. CONCRETE: 5,000 PSI AT 28 DAYS
3. REINFORCEMENT: #5 BAR @ 12" C.C. E.W. (GRADE 60) - 2" MIN. REBAR CLEARANCE (TYP)
4. WEIGHTS: 6,475 LBS
5. CONTRACTOR TO VERIFY ALL DIMENSIONS BEFORE MANUFACTURE
6. ALL LIFT POINTS & PIPE OPENINGS TO BE GROUTED BY CONTRACTOR

REVISION INFORMATION

REV. DATE: NO REVISIONS TO DATE



SUBMITTAL DRAWING: 18" DOUBLE SLOPED & FLARED HW

CUSTOMER: INFINITY PIPELINE, INC.

PROJECT: THE LAUREL ASSISTED LIVING FACILITY

STRUCTURE: LR-4

QUOTE/SALES ORDER NO: 25-2649

CHECKED BY: B. SMITH

DRAWN BY: K. CARDWELL

DATE: 11/04/25

SCALE: NTS

PG. 1 OF 1