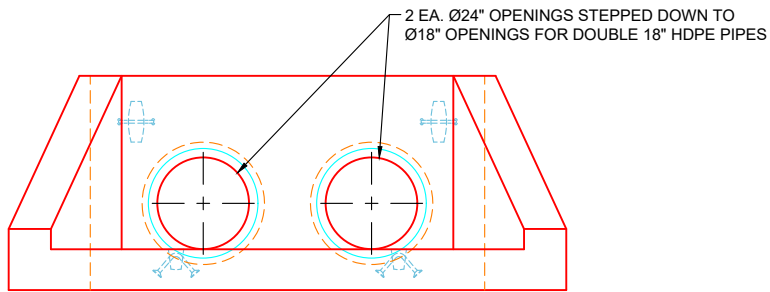
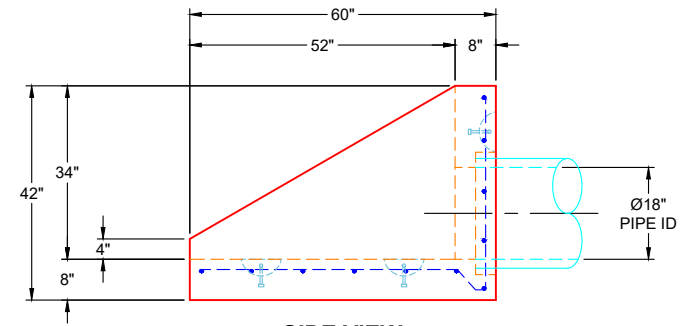


PLAN VIEW



FRONT VIEW



SIDE VIEW

GENERAL NOTES:

1. MANUFACTURED PER ASTM C-913 (LATEST REVISION) SPECIFICATIONS
2. CONCRETE: 5,000 PSI AT 28 DAYS
3. REINFORCEMENT: #5 BAR @ 12" C.C. E.W. (GRADE 60) - 2" MIN. REBAR CLEARANCE (TYP)
4. WEIGHTS: 6,475 LBS
5. CONTRACTOR TO VERIFY ALL DIMENSIONS BEFORE MANUFACTURE
6. ALL LIFT POINTS & PIPE OPENINGS TO BE GROUTED BY CONTRACTOR

REVISION INFORMATION

REV. DATE:	NO REVISIONS TO DATE



SUBMITTAL DRAWING: 18" DOUBLE SLOPED & FLARED HW		
CUSTOMER: INFINITY PIPELINE, INC.		
PROJECT: THE LAUREL ASSISTED LIVING FACILITY		
STRUCTURE: LR-3		
QUOTE/SALES ORDER NO: 25-2649		
CHECKED BY: B. SMITH	DRAWN BY: K. CARDWELL	
DATE: 11/04/25	SCALE: NTS	PG. 1 OF 1