

Job Name: 25-2627 High St. Culvert Replacement  
 Job Location: Springfield, KY  
 Contractor: M&J Construction

Plant: Beaver Dam

Tech: J. Horsley

10/14/2025 8:44:05 AM

PC: C. Goff



**Structure ID: 003 (DBI TY.7)**

**P2 BX078078-08LD08SP**

**CB FLAT TOP 8"W SPEC. (DBI-7 F/G) F/F**

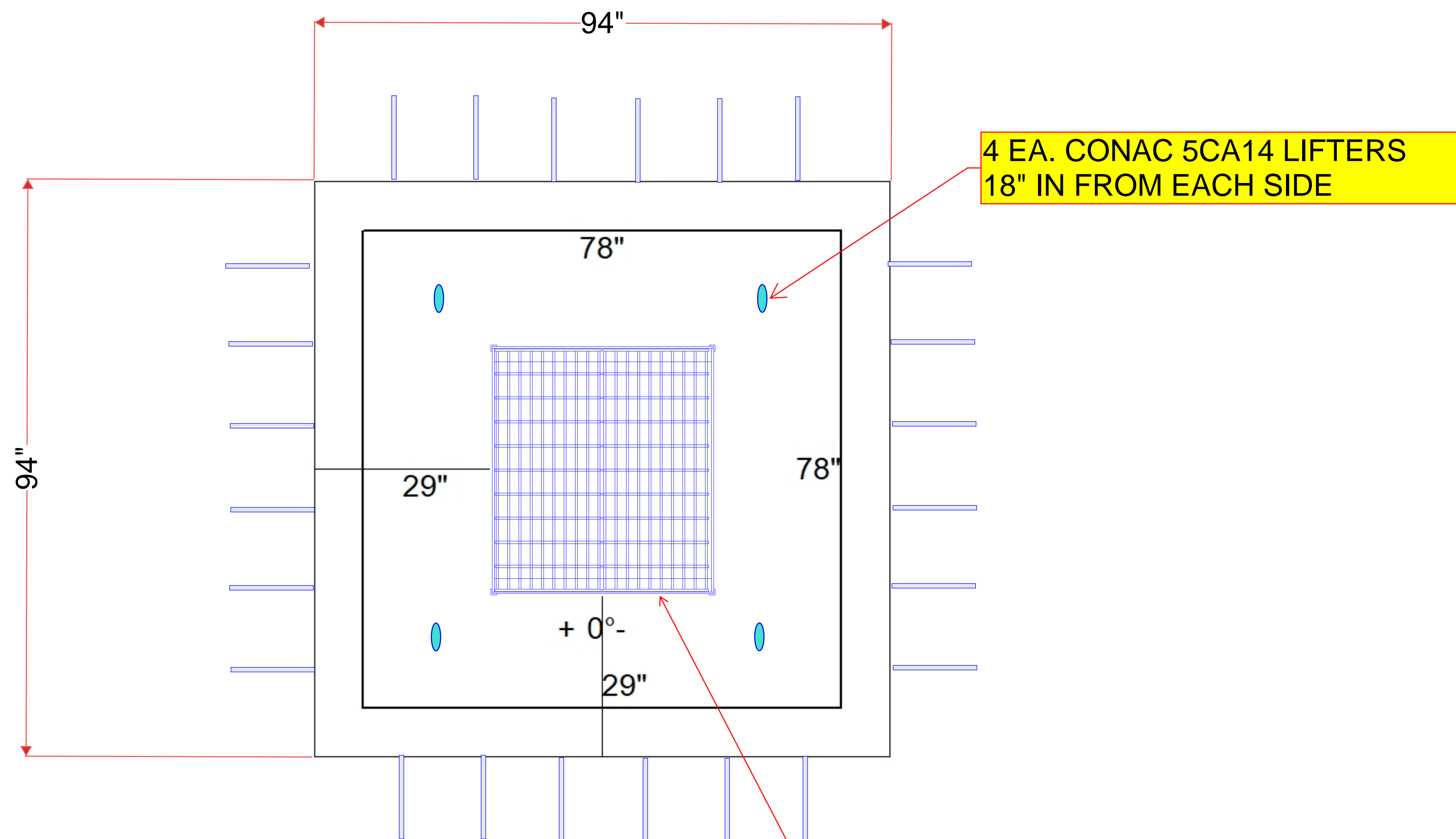
- P2) 78" x 78" - CB FLAT TOP 8"W SPEC. (DBI-7 F/G) F/F - 8"
- P1) 78" x 78" - BOX BASE 8inW, 8inF, Variable Ht F/n - 65"
- 1) CASTING - HOE KY-328 SET (DBI 7)
- 1) 36" x 36" - Conseal CS-102 1.00"
- 1) Hole - 62
- 1) Hole - 74 x 52
- 1) Hole - 22

5062 lb  
 16631 lb  
 328 lb  
 0 lb  
 0 lb  
 0 lb  
 0 lb  
 0 lb

Structure Total: 22021 lb

**Structure Notes:**  
 1. PER KYTC DBI TYPE 7 / PER ASTM C913 SPEC'S.  
 2. CONCRETE = 4,000 PSI AT 28 DAYS.  
 3. NO INVERT CHANNEL.  
 4. CASTING BY ICAST (HOE KY  
 5. STUB #5 BARS 20" OUT SIDE OF TOP SLAB (SPA@12"C/C)

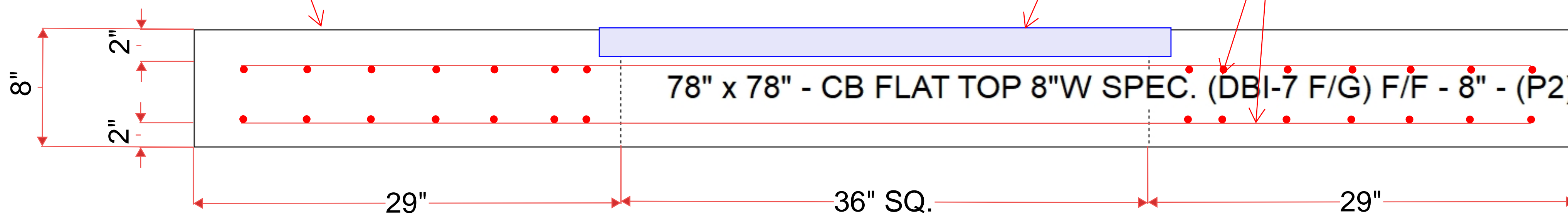
REINFORCING PER ASTM A615 (GRADE 60).  
 - TOP SLAB (As .62) #5 BARS AT 6" C.C.E.W. (DBL MAT).  
 - WALLS (As .31) #5 BARS AT 12" C.C.E.W..  
 - FLOOR (As .31) #5 BARS AT 12" C.C.E.W.



LITE BRUSH FINISH ON TOP SURFACE

HOE KY-328 DBI-7 F/G CAST INTO TOP SLAB.

DOUBLE MAT.  
 (2) #5 BARS AT 3" C/C EACH SIDE OF HATCH  
 TYP. SPA = #5 BARS AT 6" C.C.E.W.



Coating (Int): Coating (Ext):	Seam Up: Flat Seam Dn: Flat	Wall Thickness: 8"	Height (Ext): 8"	Weight (Net): 5062 lb Volume (Net): 1.29cu.yd
----------------------------------	--------------------------------	--------------------	------------------	--