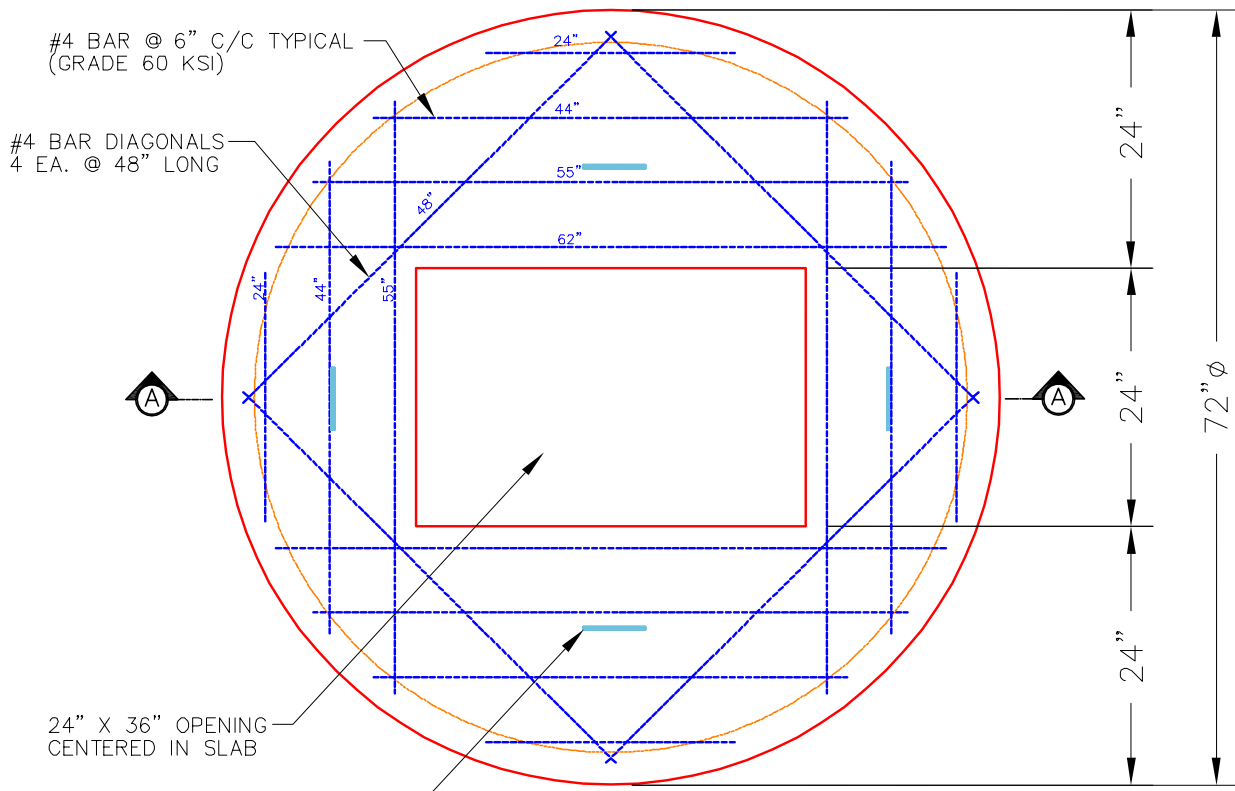


THIS DRAWING IS INTENDED TO BE PRINTED IN COLOR.



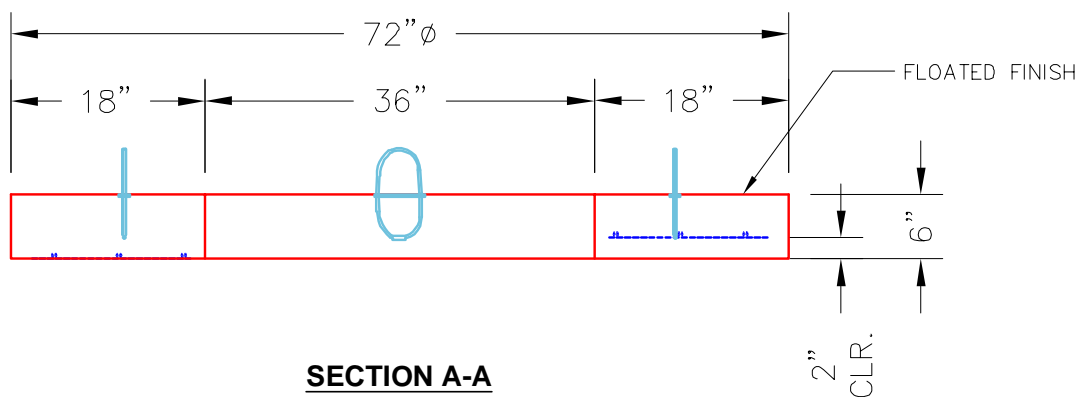
#4 BAR @ 6" C/C TYPICAL
(GRADE 60 KSI)

#4 BAR DIAGONALS
4 EA. @ 48" LONG

24" X 36" OPENING
CENTERED IN SLAB

4 EA. CONAC .8 TON 8 1/16"
(6MM) WIRE ROPE ANCHORS
REQ'D. - MINIMUM.

PLAN VIEW



SECTION A-A

NOTES:

1. MANUFACTURED TO ASTM C-478 (LATEST REVISION).
2. CONCRETE: 5,000 PSI AT 28 DAYS.
3. REINFORCING: #4 BAR @ 6" C/C (GRADE 60).
4. WEIGHT: 2,215 LBS.

#4 BAR CUT LIST

- 2 EA. @ 62"
- 4 EA. @ 55"
- 4 EA. @ 48"
- 4 EA. @ 44"
- 4 EA. @ 24"

<p>PRODUCTION WORK ORDER</p>		<p>PRODUCT I.D.: MH060LD6S</p>	<p>DESCRIPTION: 60"Ø X 6" MANHOLE TOP SLAB W/24"X36"</p>	
	<p>QUALITY CONTROL CHECKLIST</p> <ul style="list-style-type: none"> <input type="checkbox"/> ALL DIMENSIONS CORRECT. <input type="checkbox"/> WIRE LIFT LOOPS INSTALLED. <input type="checkbox"/> HOLE LOCATION CORRECT. <input type="checkbox"/> REINFORCING CORRECT. <input type="checkbox"/> FINISH ON SLAB SURFACE UNIFORM. <input type="checkbox"/> OUTSIDE TOP EDGE TROWELLED. <input type="checkbox"/> GROOVE JOINT INSTALLED. 	<p>PRODUCT VIEW: RIGHT SIDE UP</p>	<p>CUSTOMER: CITY OF RADCLIFF</p>	
		<p>PLANT: BEAVER DAM, KY.</p>	<p>PROJECT: NIGHT HAWK PLACE LOT 2G STORM</p>	
		<p>WEIGHT: 1,625 LBS.</p>	<p>STRUCTURE I.D.: DBI F</p>	
		<p>TOP SECTION JOINT: GROOVE</p>	<p>QUOTE/SALES ORDER NO: 25-2621</p>	
		<p>BASE SECTION JOINT: N/A</p>	<p>PC: J.H. ROSS, PE</p>	<p>DRAWING: C.RUSS</p>
		<p>QC CHECK INITIALS:</p>	<p>DATE: 09/25/25</p>	<p>SCALE: NTS</p>